

INDEX OF SHEETS

SHEET NO.	
1	TITLE PAGE
2-S	SUMMARY OF QUANTITIES
3	TYPICAL PAVEMENT MARKING--5" PAVEMENT MARKING

STANDARD PLANS

920-R6	(3 SHEETS) TRAFFIC CONTROL, CONSTRUCTION AND MAINTENANCE
922-R9	(2 SHEETS) TRAFFIC CONTROL FOR ASPHALT SURFACING

STATE OF NEBRASKA
DEPARTMENT OF ROADS
PLANS FOR CONSTRUCTION
US-20 TO EWING
HOLT COUNTY

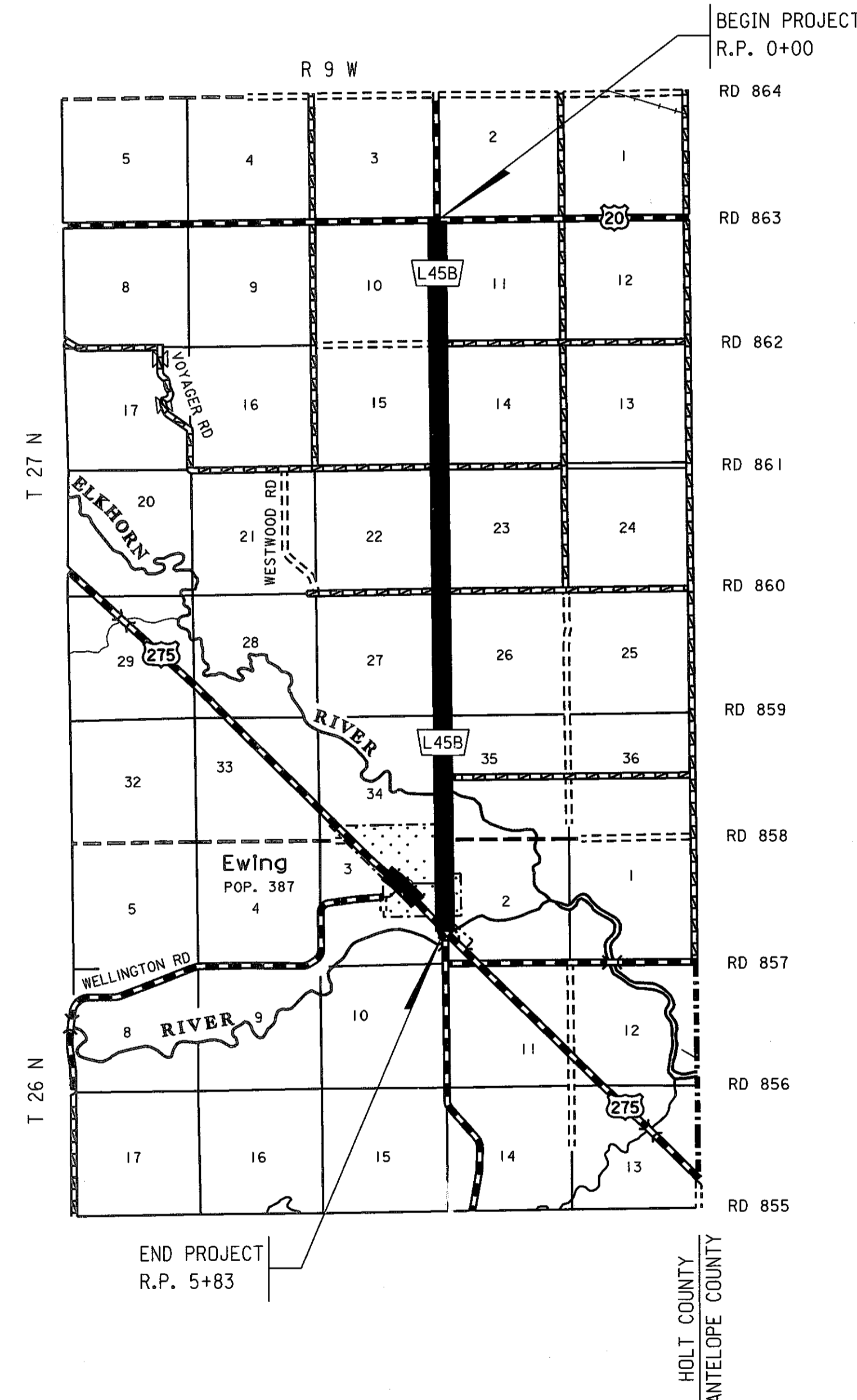


PROJECT NO.	SHEET NO.
AFE-H013	1
▲ CONTRACT ID.	M8L45B
▲ CONTRACT ID.	
■ CONTRACT ID.	

THE 2007 EDITION OF THE NEBRASKA STANDARD SPECIFICATIONS AND THE SPECIAL PROVISIONS APPLY TO THIS PROJECT.

THE WORK ON THIS PROJECT CONSISTS OF GROUPS
9-BITUMINOUS
▲ GROUPS <u>9</u> ARE INCLUDED IN THE LETTING OF <u>FEBURARY 26, 2015</u>
▲ GROUPS _____ ARE INCLUDED IN THE LETTING OF _____
■ GROUPS _____ ARE INCLUDED IN THE LETTING OF _____

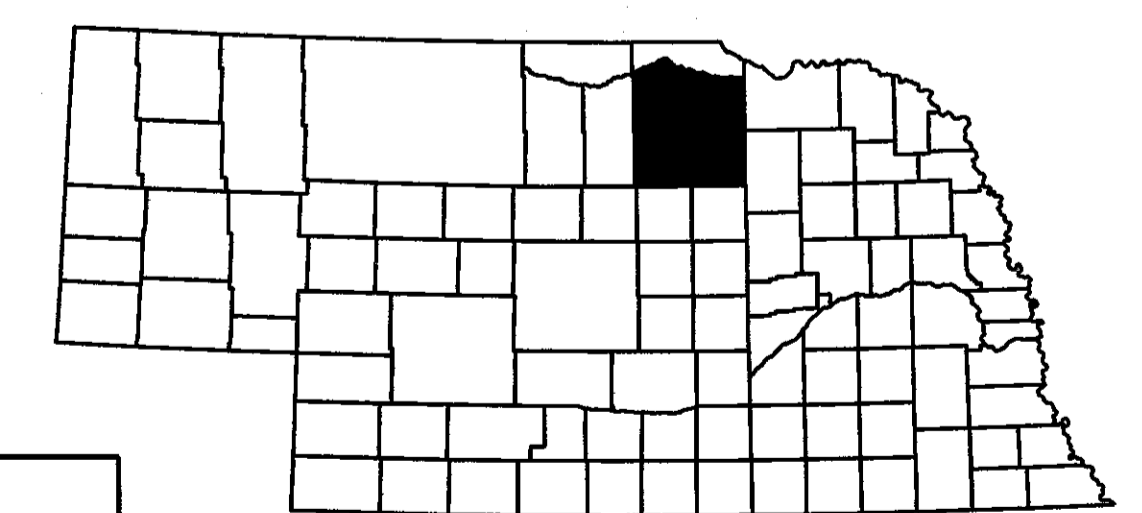
DESIGN DESIGNATION
MAINTENANCE
TRAFFIC
YEAR: 2015
ADT: 643



REFERENCE POST NO. 0+00 TO REFERENCE POST NO. 5+83

EXCEPTIONS: FROM STA. _____ TO STA. _____

TOTAL NET LENGTH OF PROJECT: 30,782.40 FEET 5.83 MILES



CONSTRUCTION DIVISION

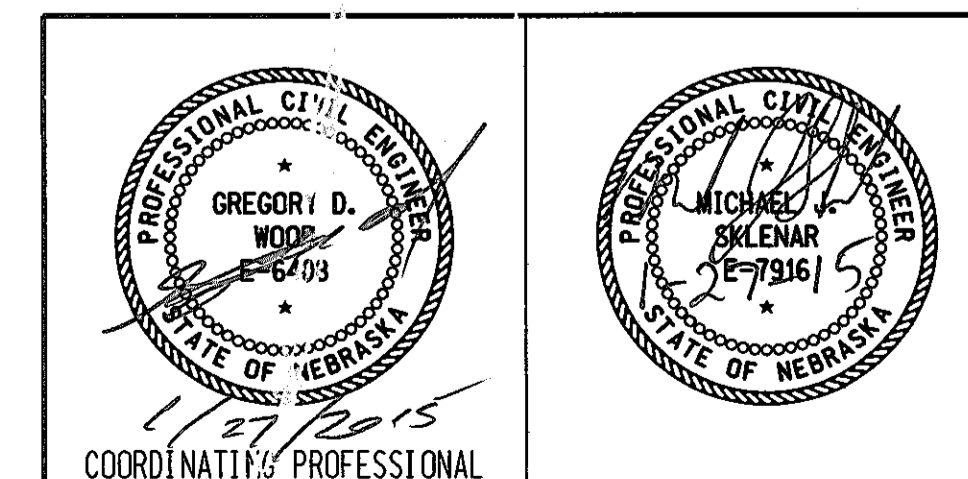
File: m8l45bset11e.dgn
Scale: 1:100

CONVENTIONAL SIGNS

FENCE R.O.W. OR WIRE	
GUARDRAIL	
TRAVELED WAY	
DIKE	
CULVERT	
POWER POLE	
TELEPHONE POLE	
MAILBOX	
RAILROAD TRACKS	
MARSH	
TREE - CONIFEROUS	
TREE - DECIDUOUS	

R.O.W. LEGEND

NEW CONTROLLED ACCESS	
PREVIOUS CONTROLLED ACCESS	
LIMITS OF CONSTRUCTION	
PREVIOUS R.O.W.	
NEW R.O.W.	
EXISTING PERMANENT EASEMENT	
TEMPORARY EASEMENT	
EXCESS TAKING	
PERMANENT EASEMENT	
EXISTING RAILROAD EASEMENT	
NEW RAILROAD PERMANENT EASEMENT	
NEW RAILROAD TEMPORARY EASEMENT	



PROJECT NO.	SHEET NO.
AFE-H013	2-5

CONTRACT ID. MBL45B

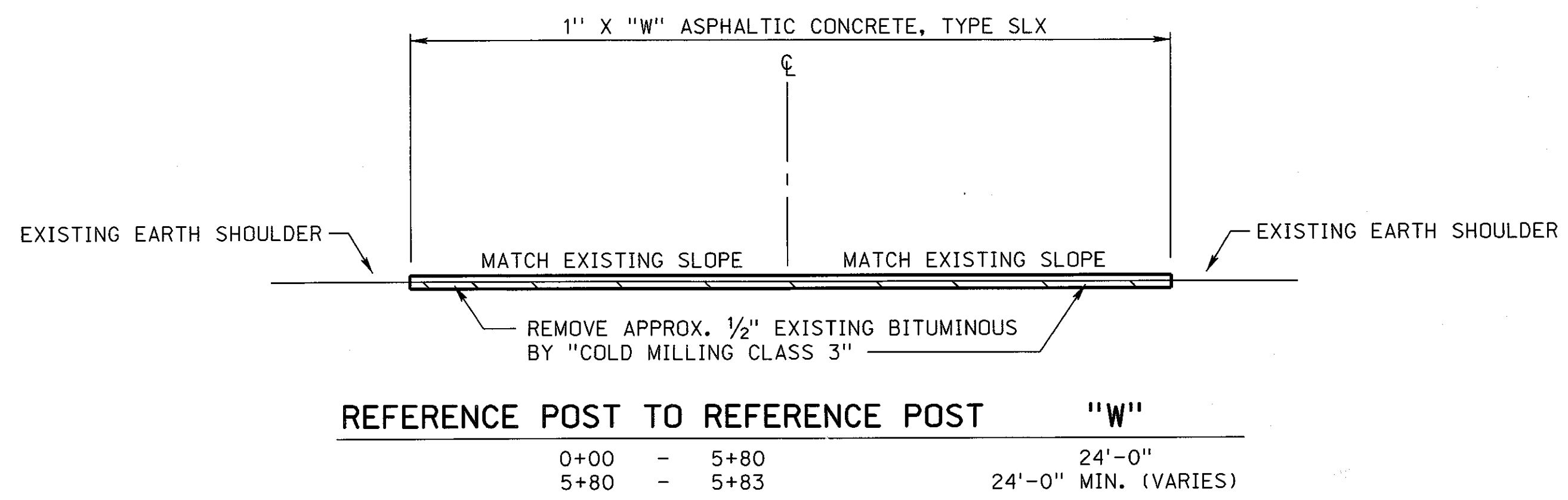
SUMMARY OF QUANTITIES

TYPICAL CROSS SECTIONS

BITUMINOUS SURFACING ITEMS GROUP 9

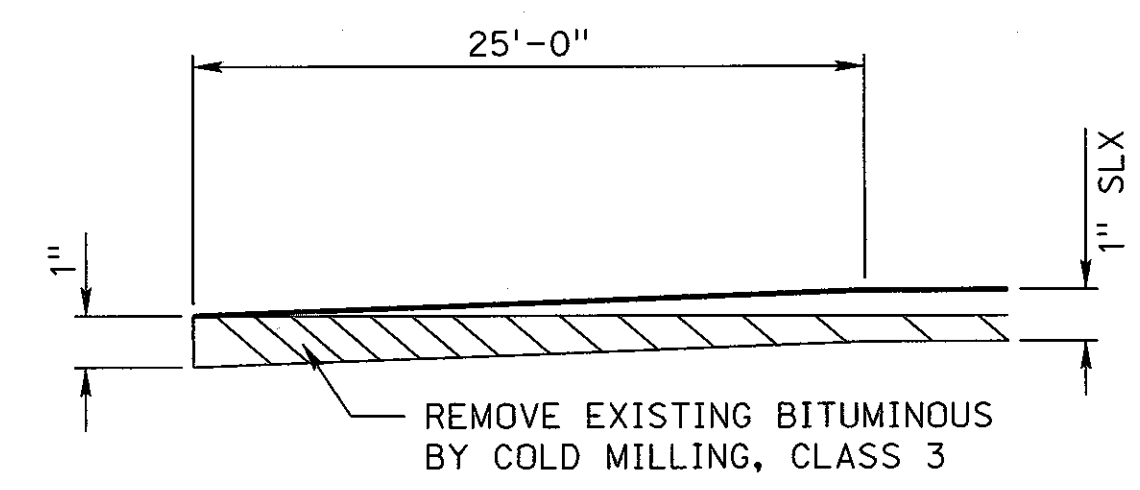
ITEM	QUANTITY	UNITS
BARRICADE, TYPE II	2,640.000	BDAY
BARRICADE, TYPE III	164.000	BDAY
TEMPORARY SIGN DAY	150.000	EACH
SIGN DAY	2,870.000	EACH
OVERLAY BROKEN LINES	616.000	STA
OVERLAY SOLID LINES	1,232.000	STA
FLAGGING	30.000	DAY
FURNISHING AND OPERATING PILOT VEHICLE	15.000	DAY
MOBILIZATION	1.000	LS
5" PERMANENT PAVEMENT MARKING PAINT	70,000.000	LF
HYDRATED LIME/WARM MIX ASPHALT	5,320.000	EACH
ASPHALTIC CONCRETE, TYPE SLX	5,120.000	TON
ASPHALTIC CONCRETE FOR PATCHING, TYPE SLX	200.000	TON
PERFORMANCE GRADED BINDER (64-34)	223.440	TON
TACK COAT	12,210.000	GAL
FOG SEAL	500.000	GAL
RENTAL OF LOADER, FULLY OPERATED	50.000	HOUR
RENTAL OF MOTOR GRADER, FULLY OPERATED	50.000	HOUR
RENTAL OF DUMP TRUCK, FULLY OPERATED	50.000	HOUR
RENTAL OF SKID LOADER, FULLY OPERATED	50.000	HOUR
COLD MILLING, CLASS 3	305.116	STA
RAP INCENTIVE PAYMENT	9,044.000	EACH
ASPHALT PAVEMENT SMOOTHNESS TESTING	1.000	LS

TYPES OF ASPHALTIC OIL TO BE USED
TACK COAT: SS-1, SS-1H, CSS-1, CSS-1H, CFS-1, FS-1
PERFORMANCE GRADED BINDER
AASHTO DESIGNATION M320

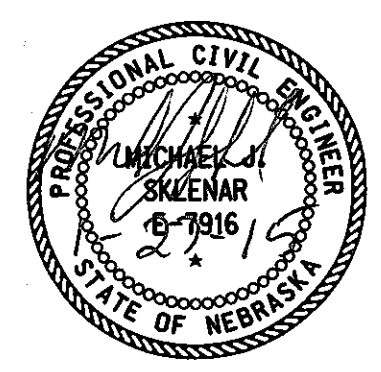


BRIDGE EXCEPTION: REF. POST 4+49 (APPROX. 200 FT.)
BRIDGE & CONCRETE EXCEPTION REF. POST 4+79 (APPROX. 150 FT.)

TRANSITION DETAIL FROM EXISTING PAVEMENT TO NEW ASPHALTIC CONCRETE, TYPE SLX



ASPHALT TONNAGE FOR PROFILE & SLOPE CORRECTIONS	
DESCRIPTION	QUANTITY
ADDITIONAL ASPHALT TONNAGE HAS BEEN INCLUDED FOR PROFILE & SLOPE CORRECTIONS.	670 TONS OF SLX



CONSTRUCTION DIVISION

File: m845bsummary.dgn
Scale: 1:100

TRAFFIC ENGINEERING DIVISION

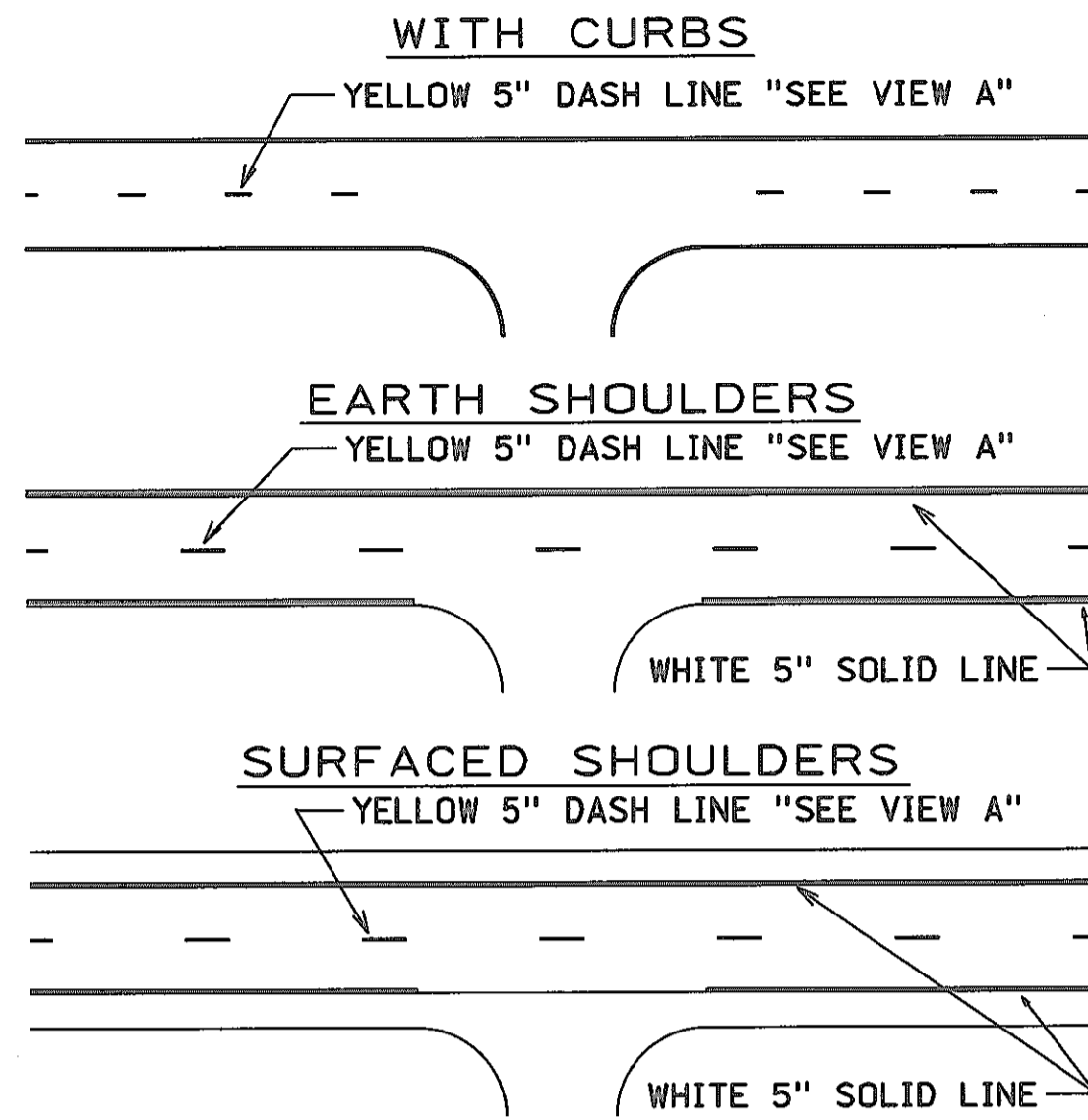
Computer: DRTRAFFIC46

User: ddr23027

Date: 21-JAN-2015 12:58

File: psp4pm-2 r1.dgn
Scale: 1:100

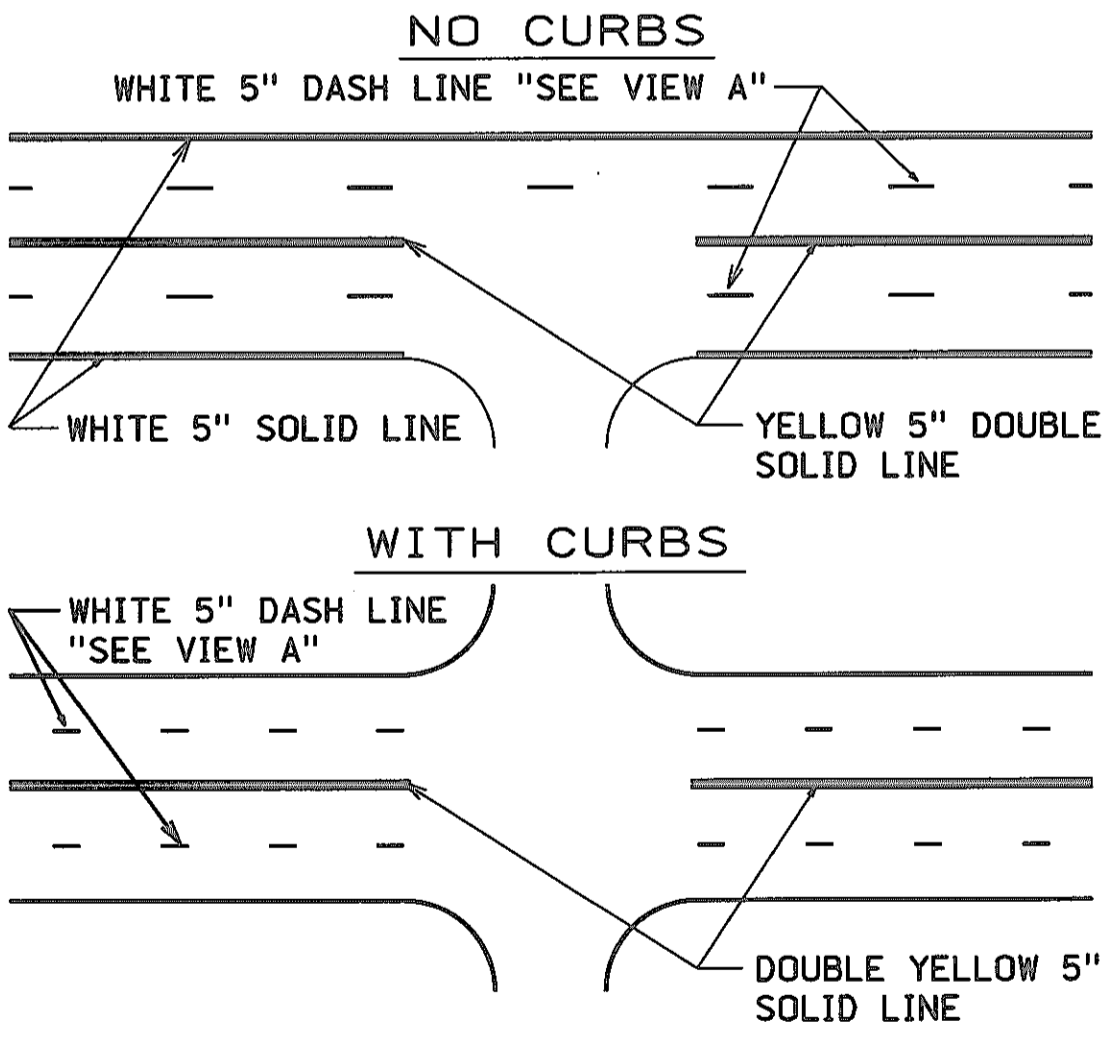
2 LANE ROADWAYS



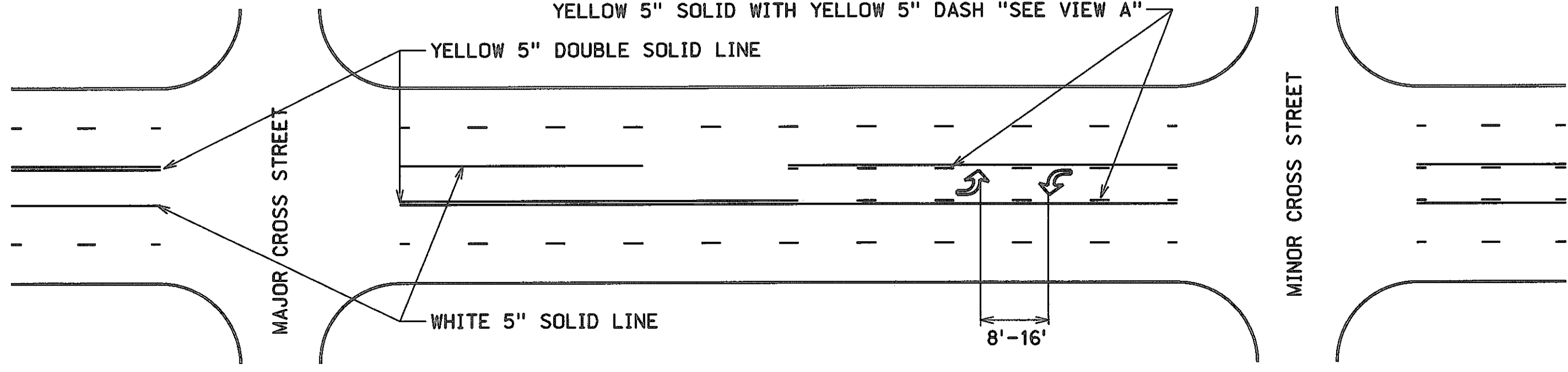
2-LANE ROADWAY REQUIRED LOCATION FOR EDGE LINES		
ROADWAY WIDTH	SHOULDER TYPE	DISTANCE FROM CENTERLINE OF ROADWAY TO OUTSIDE EDGE OF PAVEMENT EDGELINE
LESS THAN 24 FT	SURFACED	12 FT 0 IN
LESS THAN 24 FT	EARTH	PAVEMENT EDGE
24 FT	EARTH	PAVEMENT EDGE
24 FT	SURFACED	12 FT 0 IN
GREATER THAN 24 FT	EARTH	12 FT 0 IN

CENTERLINE MARKING SHALL BE PLACED ON THE "SOUTH" SIDE OF THE CENTER JOINT ON EAST-WEST ROADS AND ON THE "EAST" SIDE OF THE CENTER JOINT ON NORTH-SOUTH ROADS

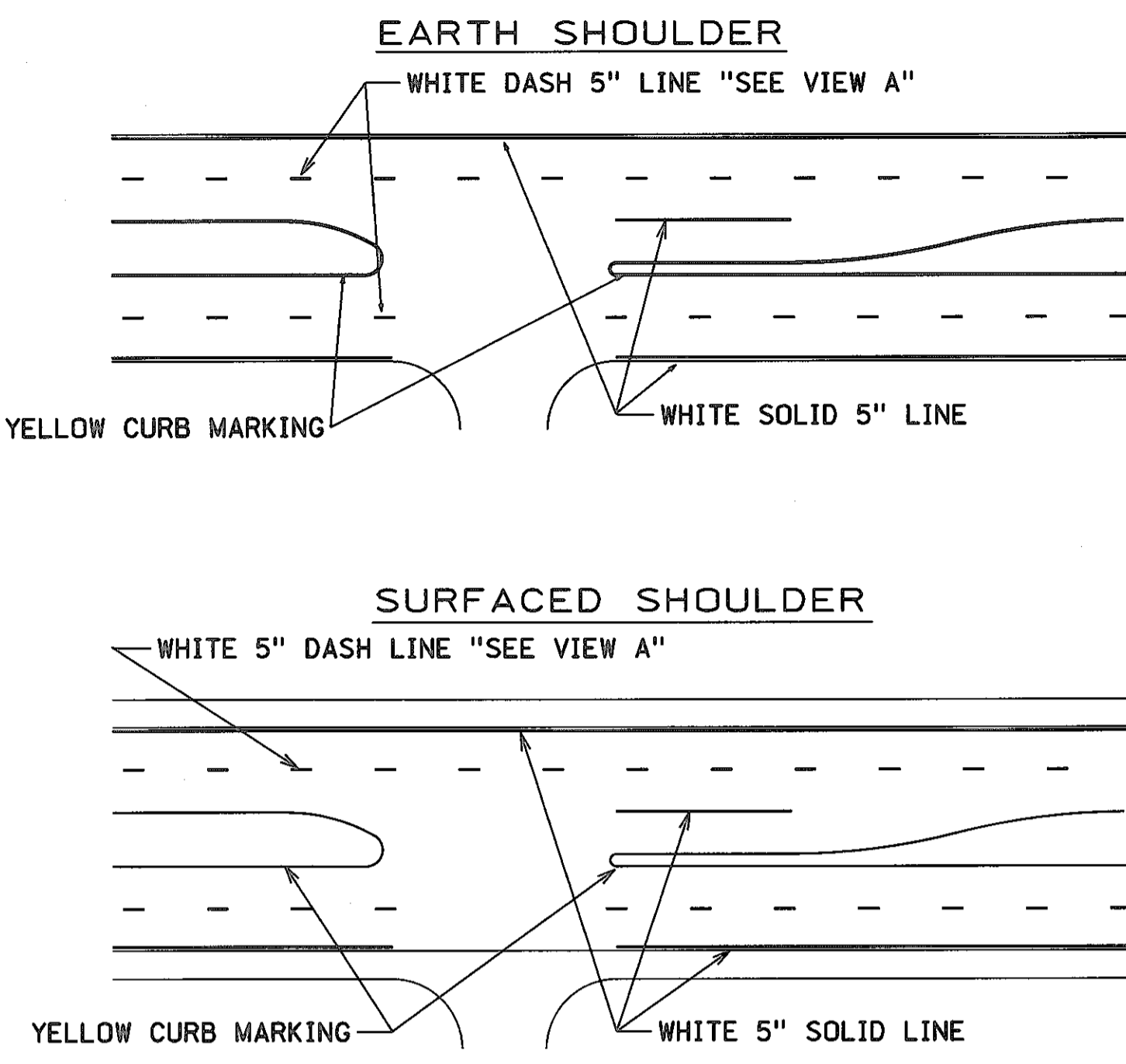
4 LANE ROADWAYS



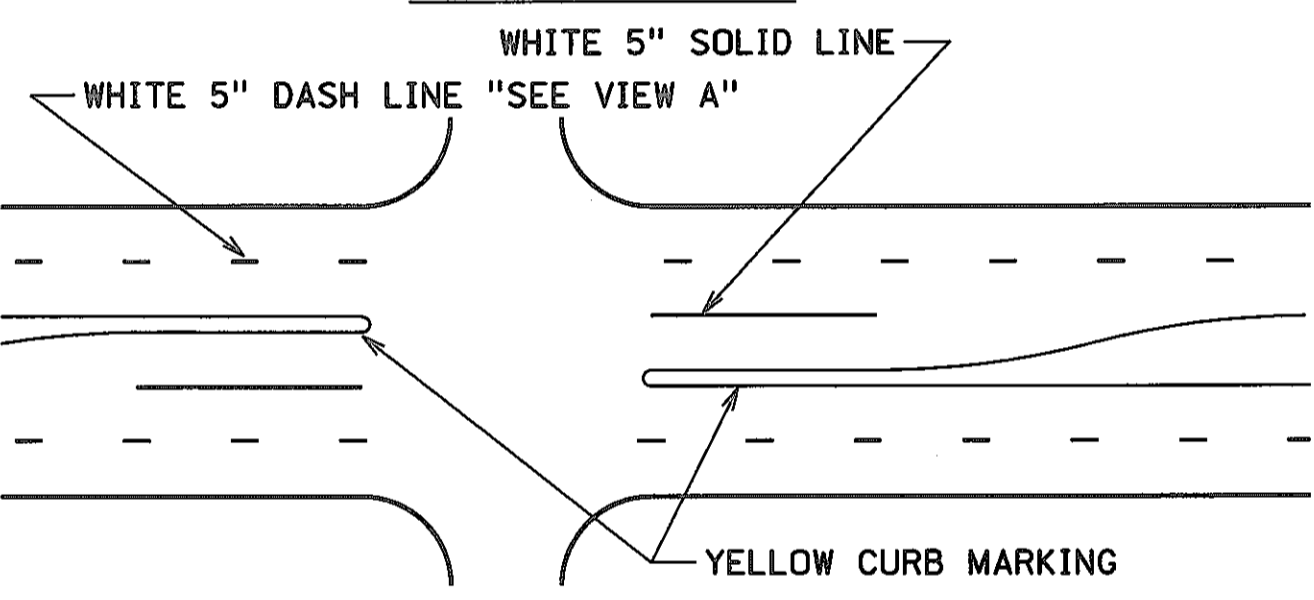
3 OR 5 LANE WITH COMMON LEFT TURN LANE



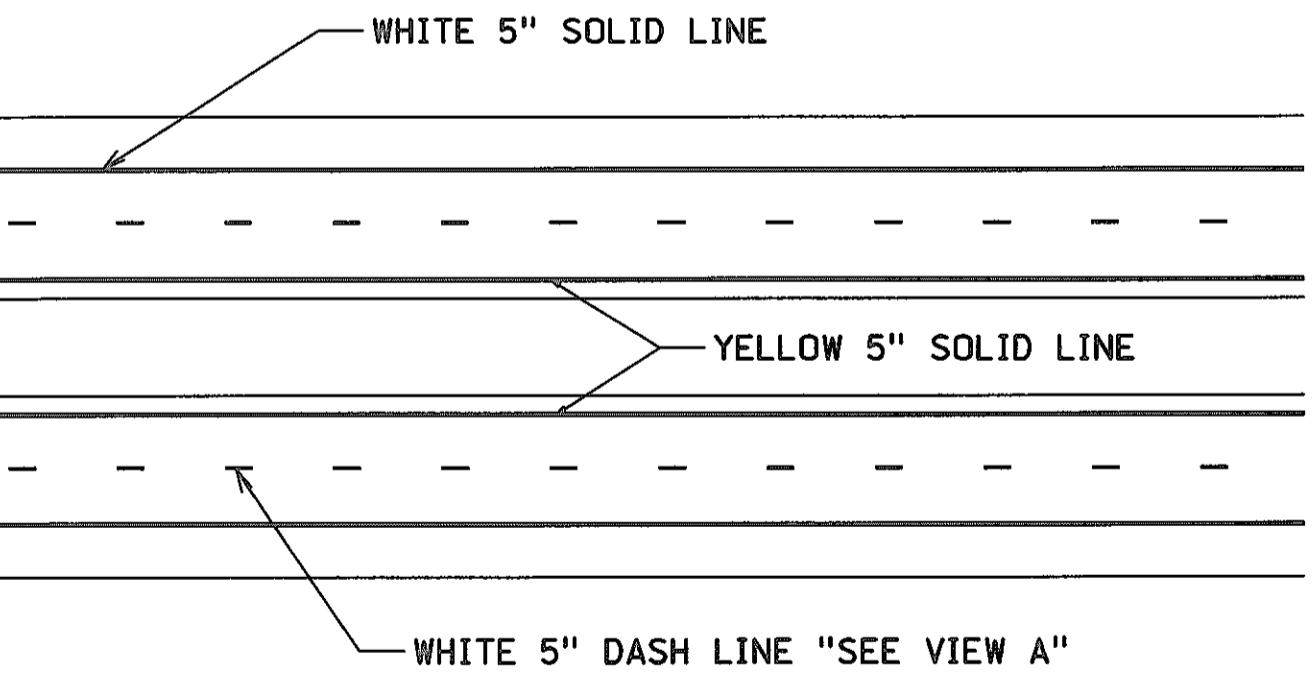
4 LANE DIVIDED ROADWAY



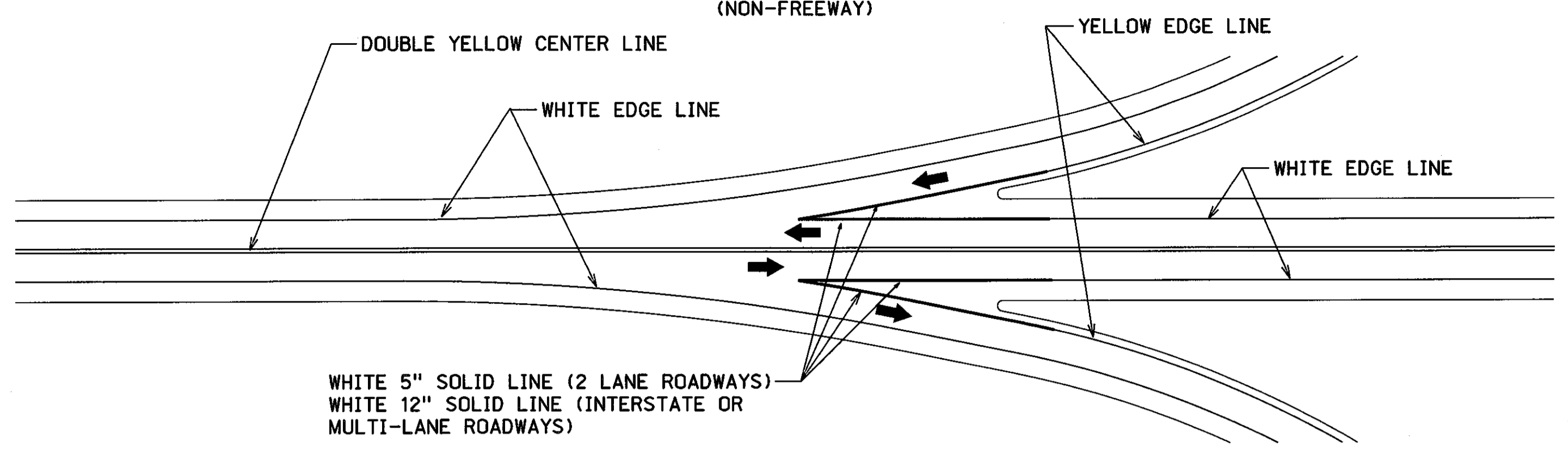
WITH CURBS



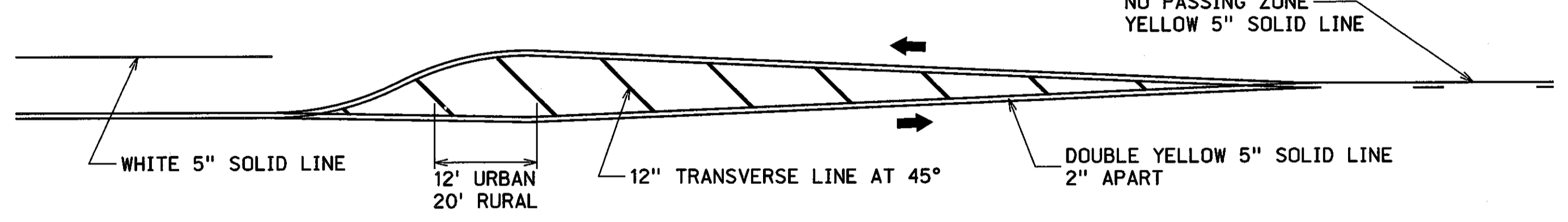
DEPRESSED MEDIAN



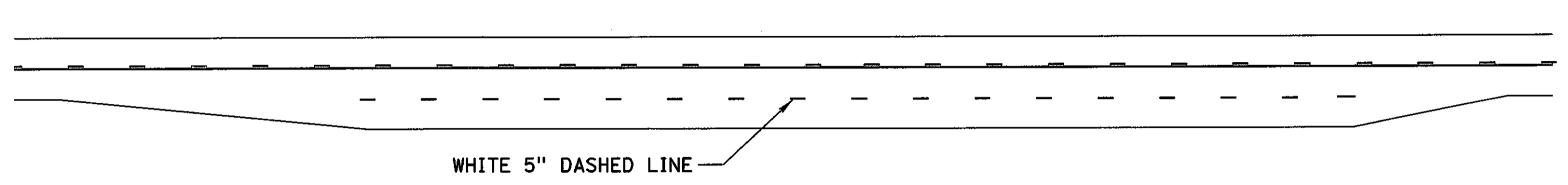
GORE MARKINGS (NON-FREEWAY)



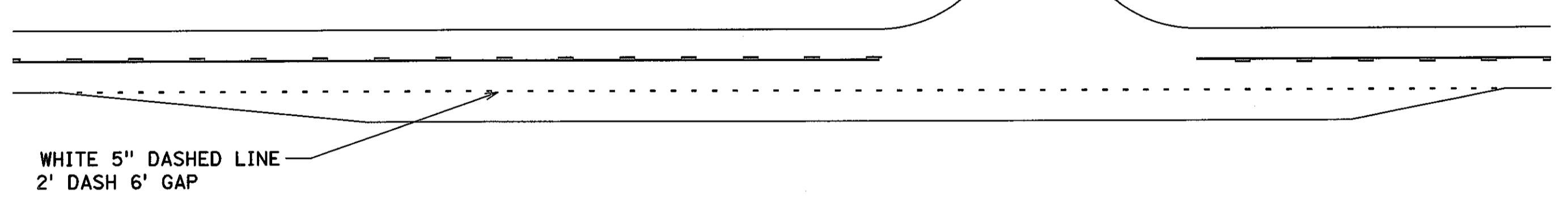
ISLAND MARKING



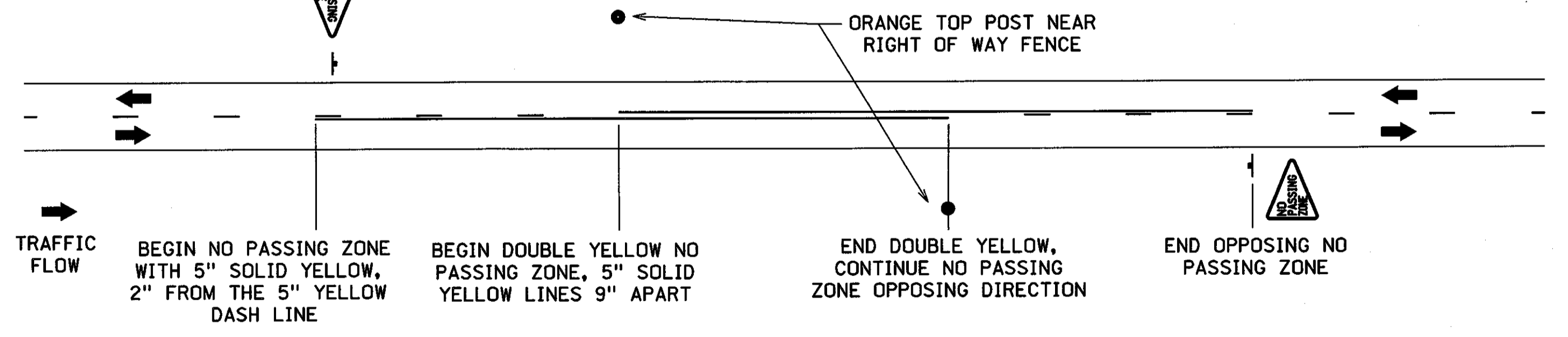
PASSING LANE MARKING



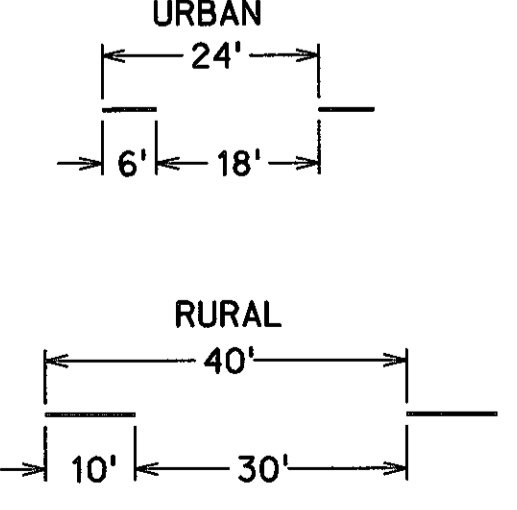
FLY-BY LANE MARKING



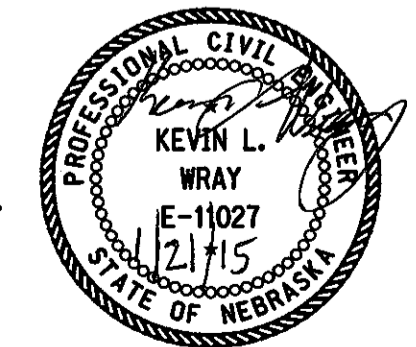
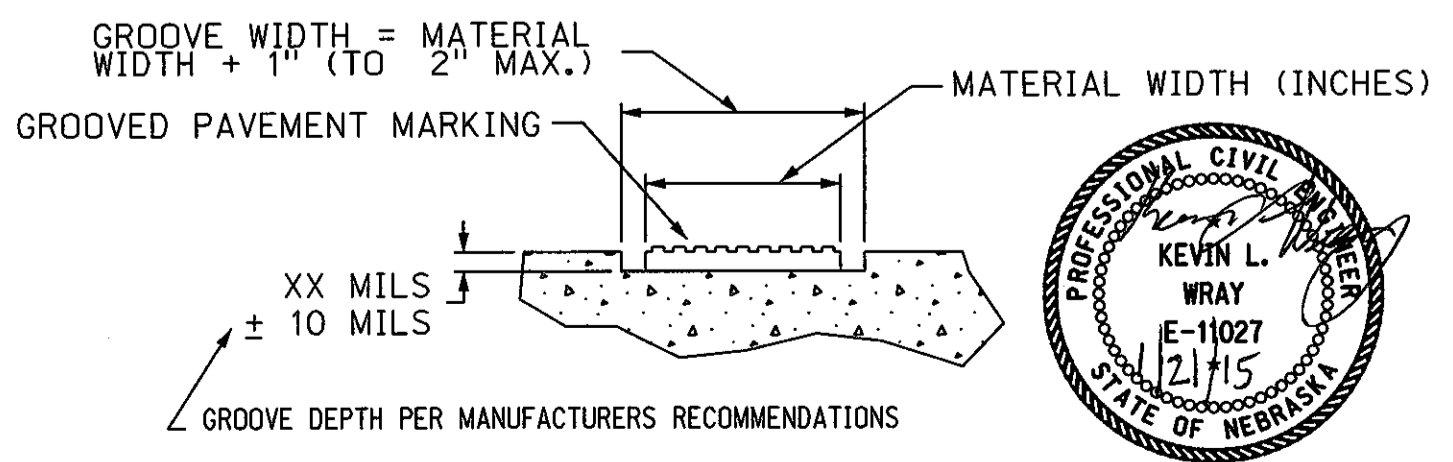
TYPICAL NO PASSING ZONE MARKINGS



VIEW A



PERMANENT PAVEMENT MARKINGS INSTALLED IN GROOVES



NEBRASKA DEPARTMENT OF ROADS TRAFFIC ENGINEERING DIVISION			
TYPICAL PAVEMENT MARKING PLAN			
DESIGNED	TJF	5" PAVEMENT MARKING	
REVIEWED			(1/1)
APPROVED	DATE DRAWN	TRAFFIC ENGINEER	DATE
	12/12		