

**INDEX OF SHEETS**

SHEET NO.	DESCRIPTION
1	TITLE PAGE & SUMMARY OF QUANTITIES
2 - 3	TYPICAL TRAFFIC CONTROL PLAN--LANE CLOSURE PLAN FOR MULTILANE ROADWAYS

**STANDARD PLANS**

920-R5 (2 SHEETS) TRAFFIC CONTROL, CONSTRUCTION AND MAINTENANCE

**STATE OF NEBRASKA  
DEPARTMENT OF ROADS  
PLANS FOR CONSTRUCTION  
WYOMING LINE EAST  
KIMBALL COUNTY**

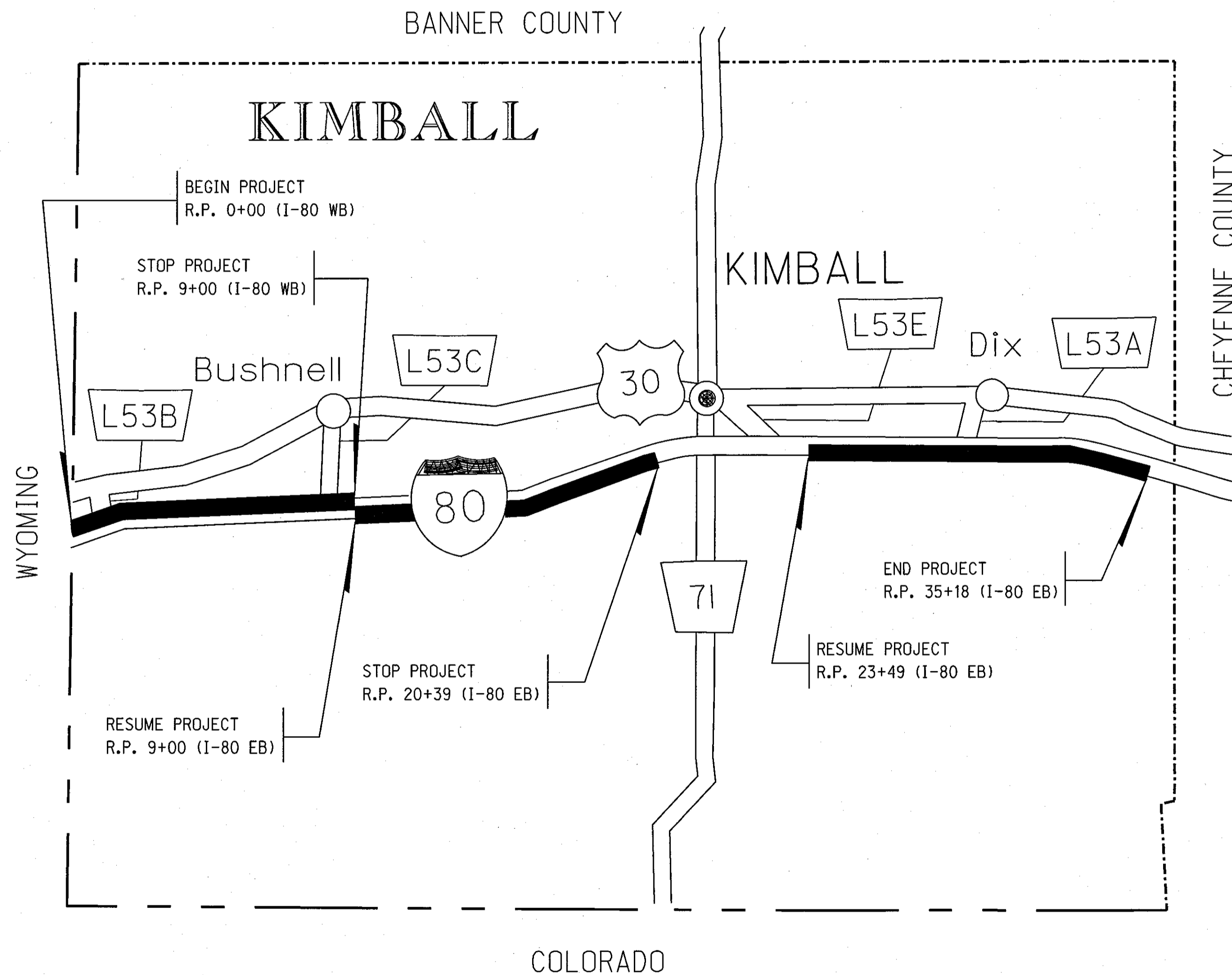
PROJECT NO.	SHEET NO.
RD-80-1(1043)	1
▲ CONTROL NO.	51492
▲ CONTROL NO.	
■ CONTROL NO.	

THE 2007 EDITION OF THE NEBRASKA STANDARD SPECIFICATIONS AND THE SPECIAL PROVISIONS APPLY TO THIS PROJECT.

**SUMMARY OF QUANTITIES**

**SPECIALTY ITEMS  
GROUP 8**

ITEM	QUANTITY	UNITS
BARRICADE, TYPE II	6,800.000	BDAY
BARRICADE, TYPE III	264.000	BDAY
TEMPORARY SIGN DAY	480.000	EACH
SIGN DAY	1,056.000	EACH
FLASHING ARROW PANEL	40.000	DAY
MOBILIZATION	1.000	LS
CRACK SEALING BITUMINOUS SURFACING	472,167.000	LF

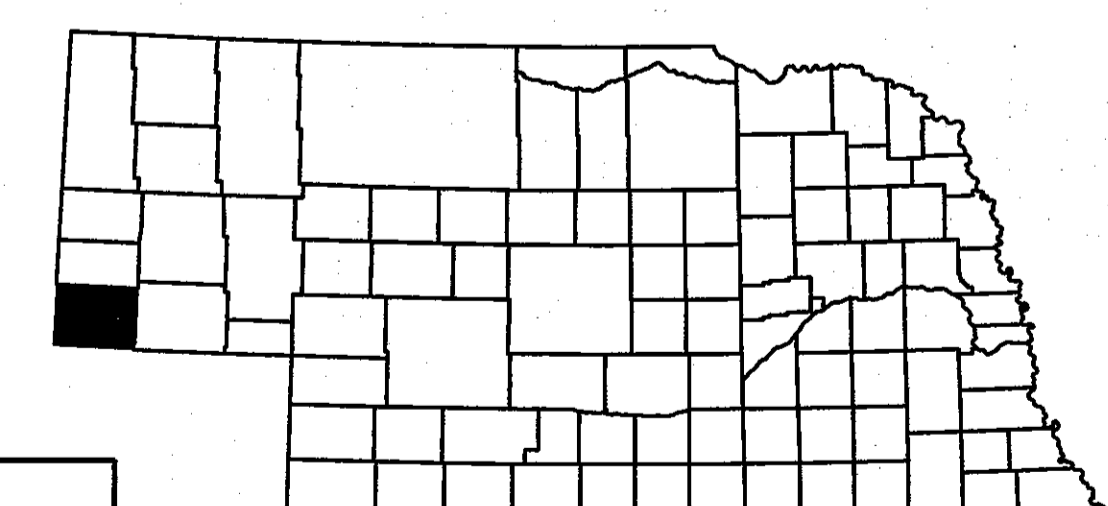


THE WORK ON THIS PROJECT CONSISTS OF GROUPS

8-SPECIALTY	
▲ GROUPS 8 ARE INCLUDED	IN THE LETTING OF JUNE 27, 2013
▲ GROUPS ARE INCLUDED	IN THE LETTING OF
■ GROUPS ARE INCLUDED	IN THE LETTING OF

DESIGN DESIGNATION

MAINTENANCE
TRAFFIC
YEAR: 2013
ADT: 7,790



CONSTRUCTION DIVISION

Computer: DRCONSTRUCT24

User: dor17005

Date: 11-APR-2013 13:33

File: 514920ps@file.dgn  
Scale: 1:100

**CONVENTIONAL SIGNS**

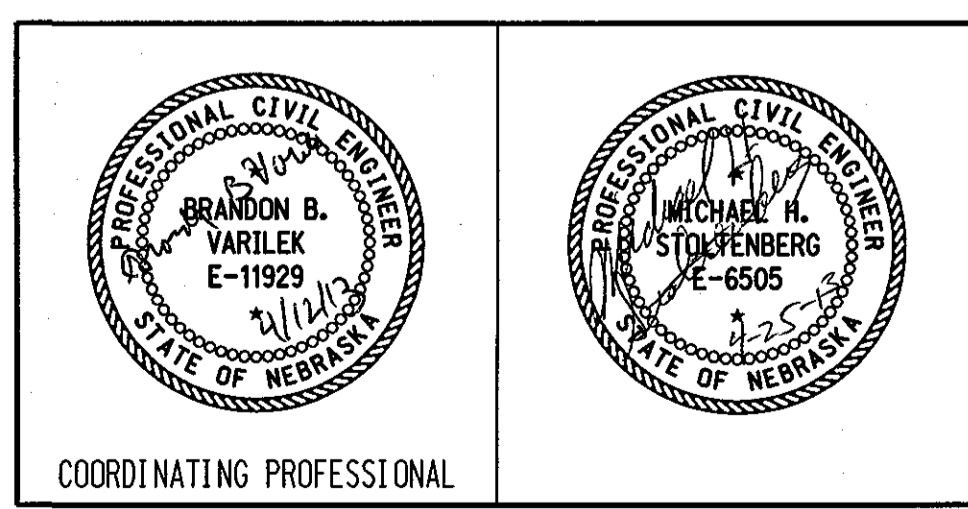
FENCE R.O.W. OR WIRE	
GUARDRAIL	
TRAVELED WAY	
DIKE	
CULVERT	
POWER POLE	
TELEPHONE POLE	
MAILBOX	
RAILROAD TRACKS	
MARSH	
TREE - CONIFEROUS	
TREE - DECIDUOUS	

**R.O.W. LEGEND**

NEW CONTROLLED ACCESS	
PREVIOUS CONTROLLED ACCESS	
LIMITS OF CONSTRUCTION	
PREVIOUS R.O.W.	
NEW R.O.W.	
EXISTING PERMANENT EASEMENT	
TEMPORARY EASEMENT	
EXCESS TAKING	
PERMANENT EASEMENT	
EXISTING RAILROAD EASEMENT	
NEW RAILROAD PERMANENT EASEMENT	
NEW RAILROAD TEMPORARY EASEMENT	

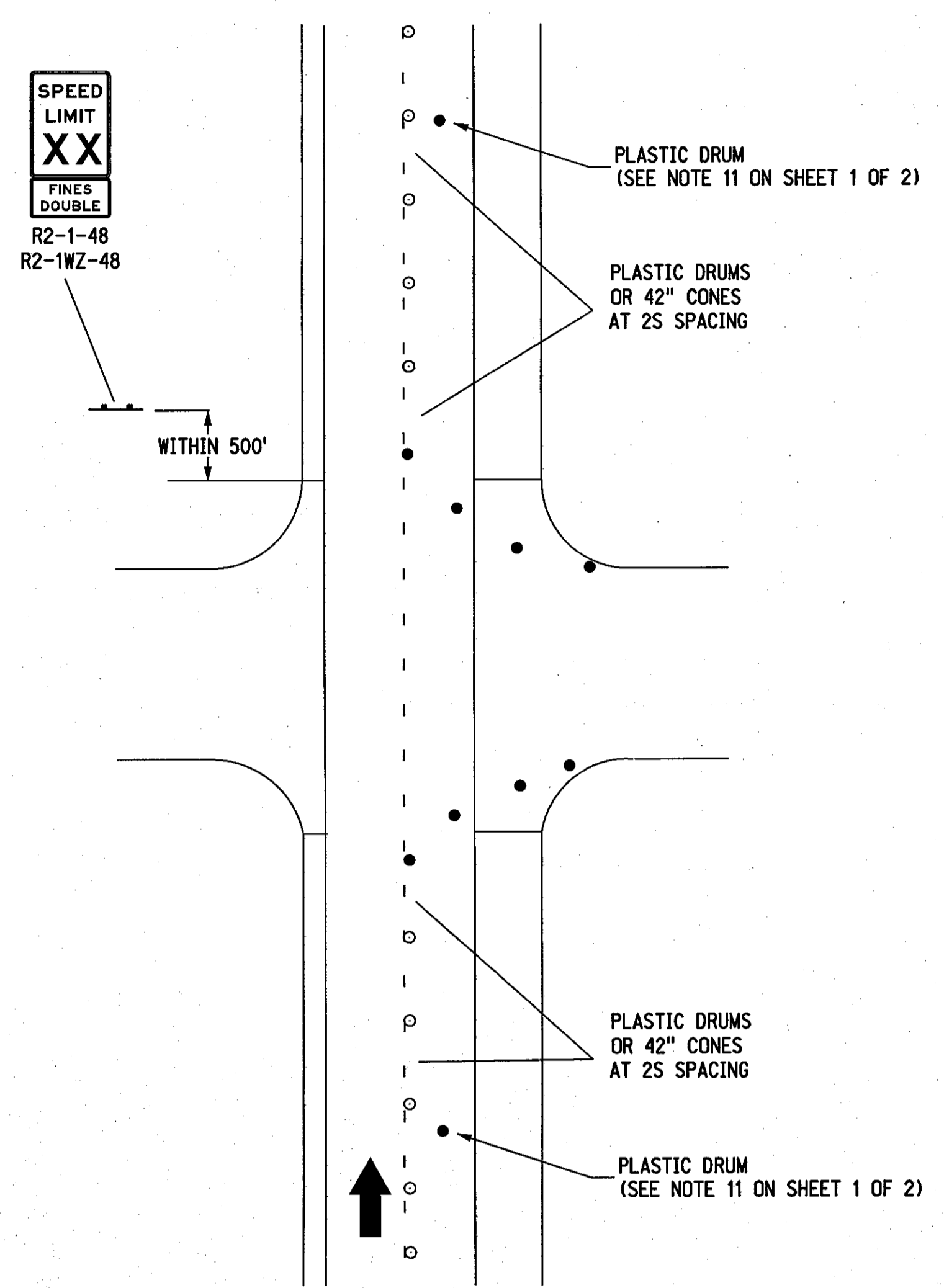
REFERENCE POST NO. 0+00 TO REFERENCE POST NO. 9+00 (I-80 WB)  
 REFERENCE POST NO. 9+00 TO REFERENCE POST NO. 20+39 (I-80 EB)  
 REFERENCE POST NO. 23+49 TO REFERENCE POST NO. 35+18 (I-80 EB)

EXCEPTIONS: FROM STA. TO STA.  
 TOTAL NET LENGTH OF PROJECT: FEET MILES

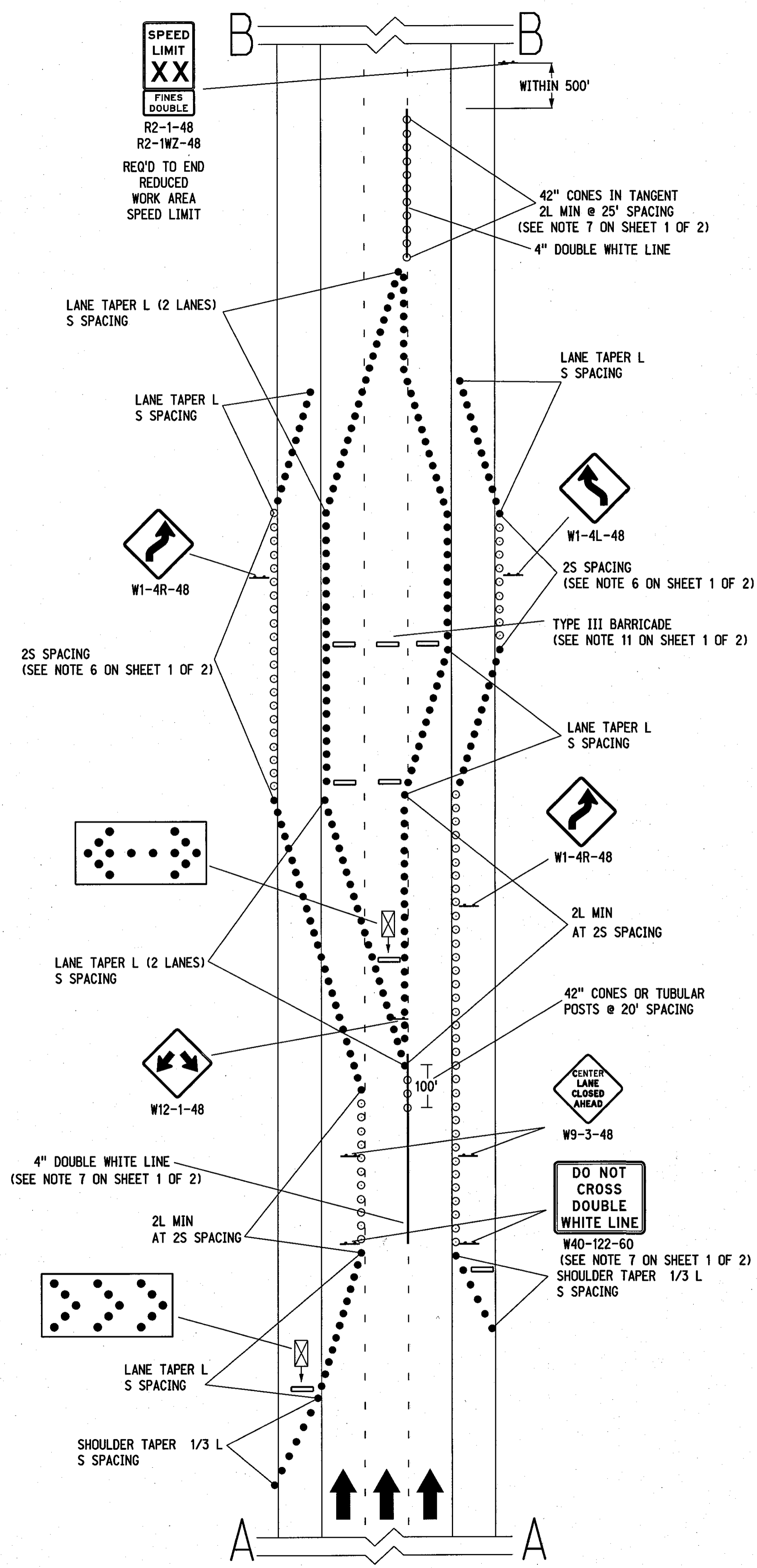




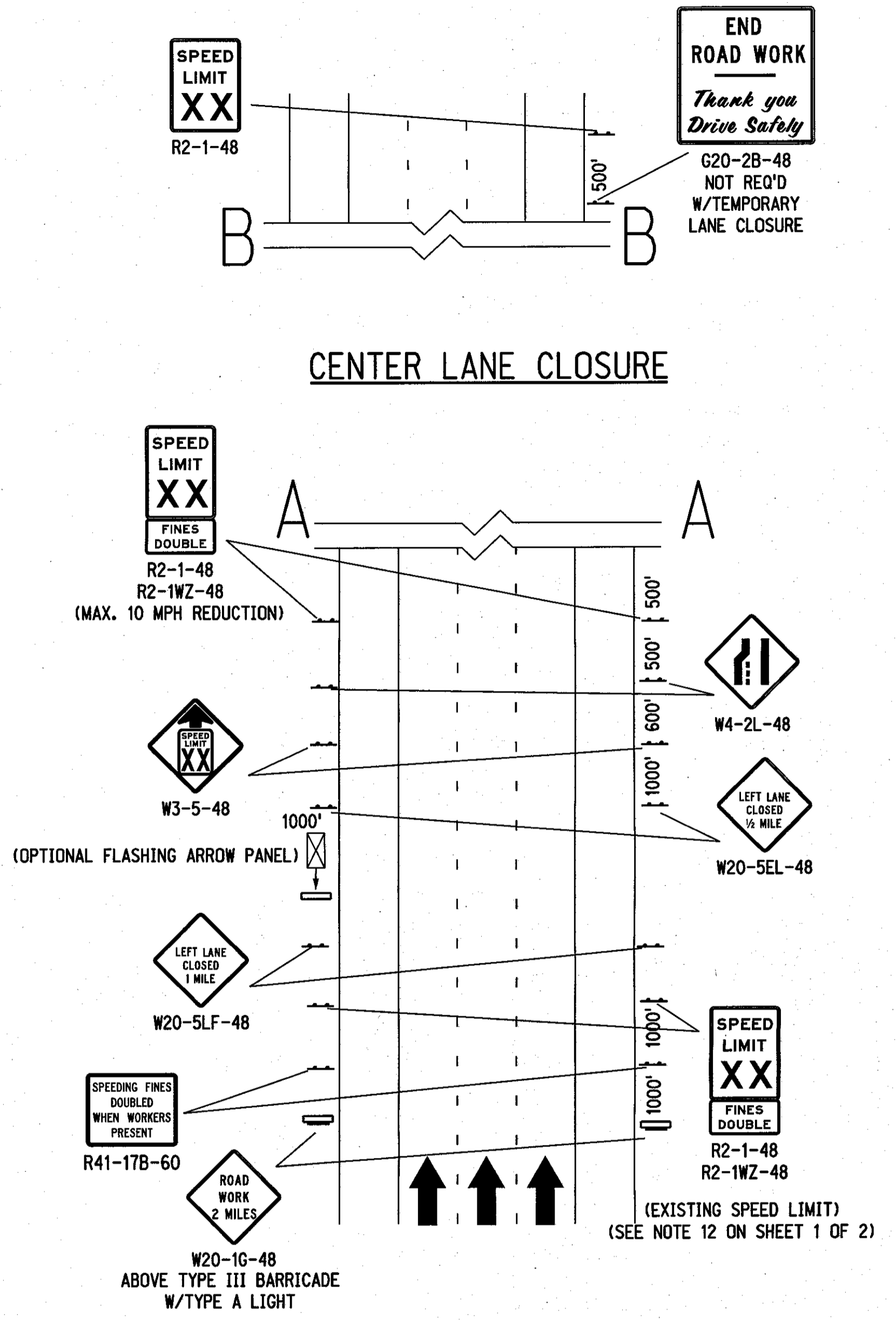
**SIDE ROAD ENTRY WITHIN LANE CLOSURE**



- LEGEND**
- FLASHING ARROW PANEL
  - TYPE III BARRICADE
  - REFLECTORIZED PLASTIC DRUM
  - REFLECTORIZED PLASTIC DRUM OR 42" REFLECTORIZED CONE
  - SINGLE POST SIGN
  - DOUBLE POST SIGN



**CENTER LANE CLOSURE**



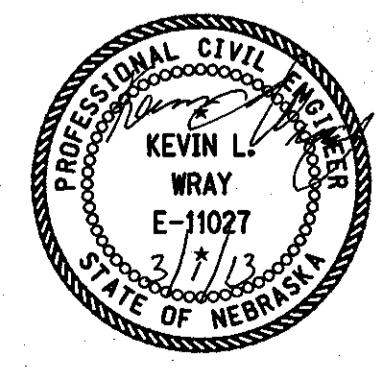
**TAPER FORMULA**

$L = S \times W$  FOR SPEEDS OF 45 MPH OR MORE.

$L = \frac{WS^2}{60}$  FOR SPEEDS OF 40 MPH OR LESS.

WHERE:

- L = MINIMUM LENGTH OF TAPER.
- S = NUMERICAL VALUE OF POSTED SPEED LIMIT PRIOR TO WORK.
- W = WIDTH OF OFFSET (LANE WIDTH).



NEBRASKA DEPARTMENT OF ROADS TRAFFIC ENGINEERING DIVISION			
TYPICAL TRAFFIC CONTROL PLAN			
DESIGNED	TJF	LANE CLOSURE PLAN	
REVIEWED		FOR MULTILANE ROADWAYS	
APPROVED	DATE DRAWN	TRAFFIC ENGINEER	DATE
	12/12		

TRAFFIC ENGINEERING DIVISION

Computer: DRTRAFFIC20

User: dor23056

Date: 01-MAR-2013 10:01

File: w2394-3 r5.dgn  
Scale: 1:100