

INDEX OF SHEETS

SHEET NO.	
1	TITLE PAGE & SUMMARY OF QUANTITIES
2 - 3	TYPICAL TRAFFIC CONTROL PLAN--LANE CLOSURE PLAN FOR MULTILANE ROADWAYS

STANDARD PLANS

920-R6 (3 SHEETS) TRAFFIC CONTROL, CONSTRUCTION AND MAINTENANCE

**STATE OF NEBRASKA
DEPARTMENT OF ROADS
PLANS FOR CONSTRUCTION
WACO - UTICA
YORK COUNTY**

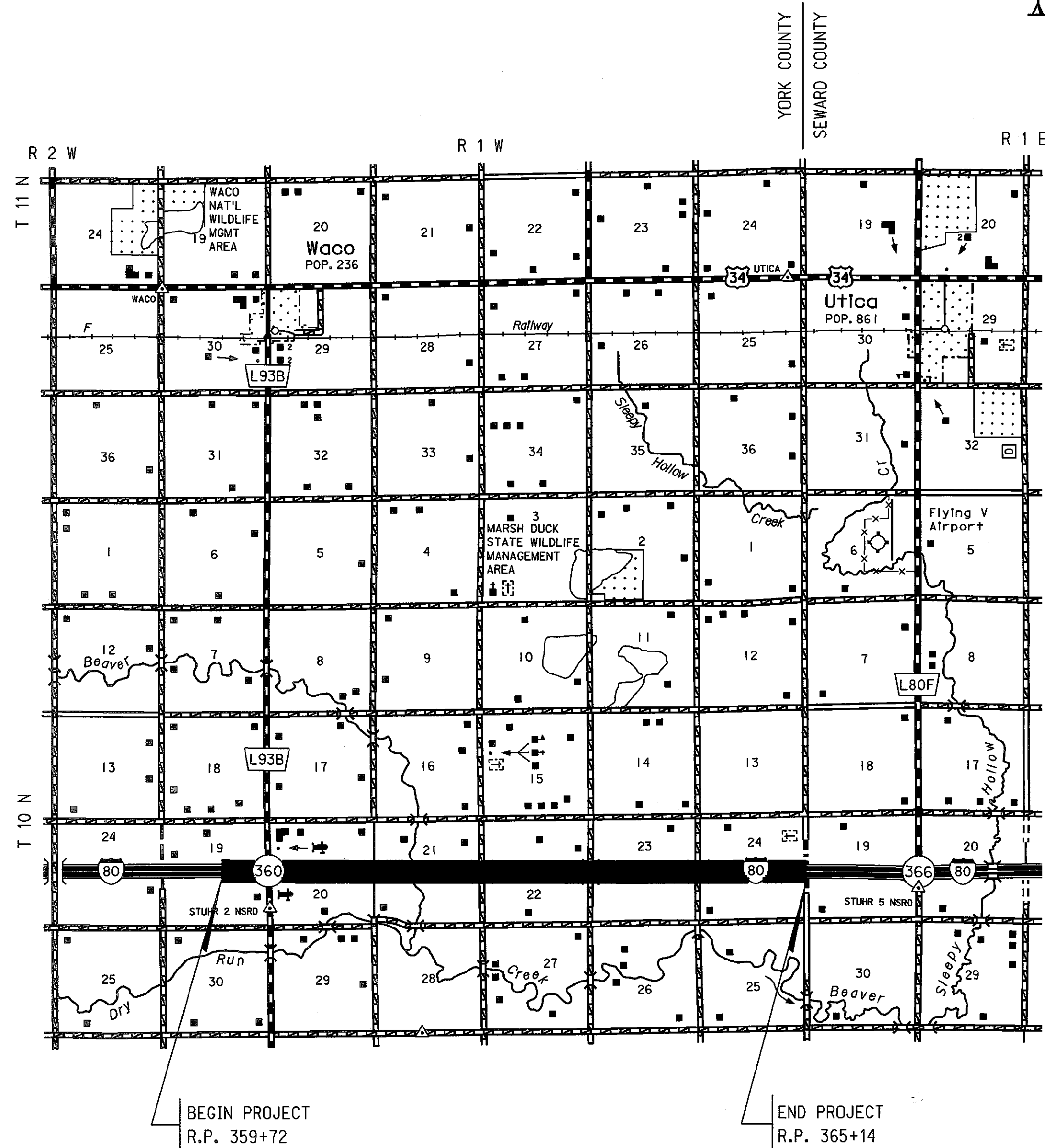
PROJECT NO.	SHEET NO.
RD-80-8(1037)	1
▲ CONTROL NO.	42679
▲ CONTROL NO.	
■ CONTROL NO.	

THE 2007 EDITION OF THE NEBRASKA STANDARD SPECIFICATIONS AND THE SPECIAL PROVISIONS APPLY TO THIS PROJECT.

SUMMARY OF QUANTITIES

**SPECIALTY ITEMS
GROUP 8**

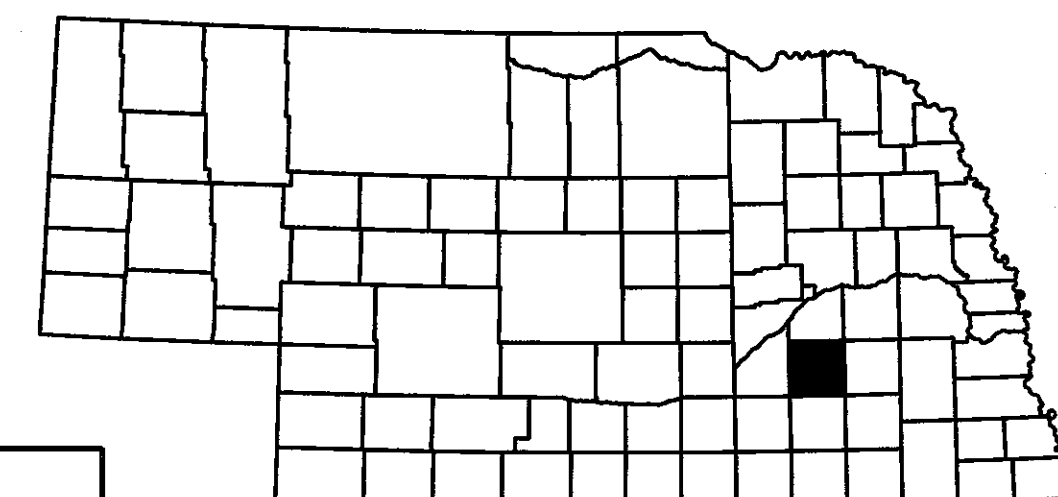
ITEM	QUANTITY	UNITS
BARRICADE, TYPE II	1,050.000	BDAY
BARRICADE, TYPE III	29.000	BDAY
TEMPORARY SIGN DAY	70.000	EACH
SIGN DAY	132.000	EACH
FLASHING ARROW PANEL	5.000	DAY
MOBILIZATION	1.000	LS
CRACK SEALING BITUMINOUS SURFACING	67,700.000	LF



THE WORK ON THIS PROJECT CONSISTS OF GROUPS

8-SPECIALTY	
▲ GROUPS 8 ARE INCLUDED	IN THE LETTING OF JULY 31, 2014
▲ GROUPS ARE INCLUDED	IN THE LETTING OF
■ GROUPS ARE INCLUDED	IN THE LETTING OF

DESIGN DESIGNATION
MAINTENANCE
TRAFFIC
YEAR: 2014
ADT: 12,002



CONVENTIONAL SIGNS

FENCE R.O.W. OR WIRE	
GUARDRAIL	
TRAVELED WAY	
DIKE	
CULVERT	
POWER POLE	
TELEPHONE POLE	
MAILBOX	
RAILROAD TRACKS	
MARSH	
TREE - CONIFEROUS	
TREE - DECIDUOUS	

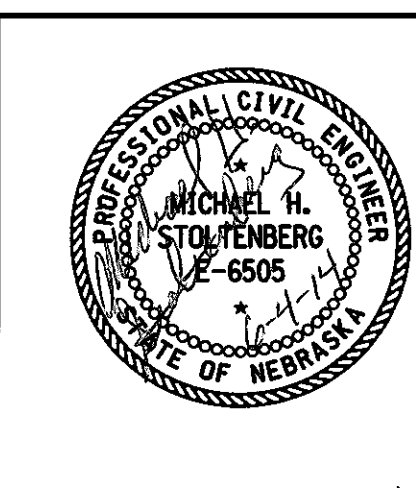
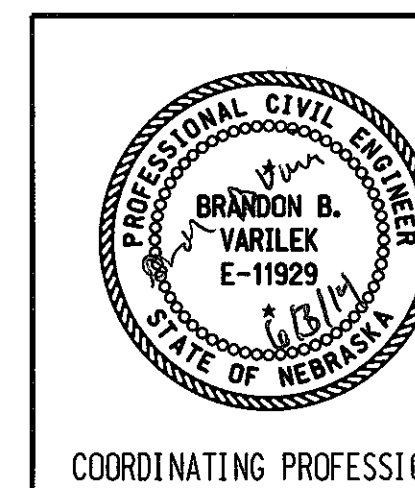
R.O.W. LEGEND

NEW CONTROLLED ACCESS	
PREVIOUS CONTROLLED ACCESS	
LIMITS OF CONSTRUCTION	
PREVIOUS R.O.W.	
NEW R.O.W.	
EXISTING PERMANENT EASEMENT	
TEMPORARY EASEMENT	
EXCESS TAKING	
PERMANENT EASEMENT	
EXISTING RAILROAD EASEMENT	
NEW RAILROAD PERMANENT EASEMENT	
NEW RAILROAD TEMPORARY EASEMENT	

REFERENCE POST NO. 359+72 TO REFERENCE POST NO. 365+14

EXCEPTIONS: FROM STA. TO STA.

TOTAL NET LENGTH OF PROJECT: FEET MILES



COORDINATING PROFESSIONAL

CONSTRUCTION DIVISION

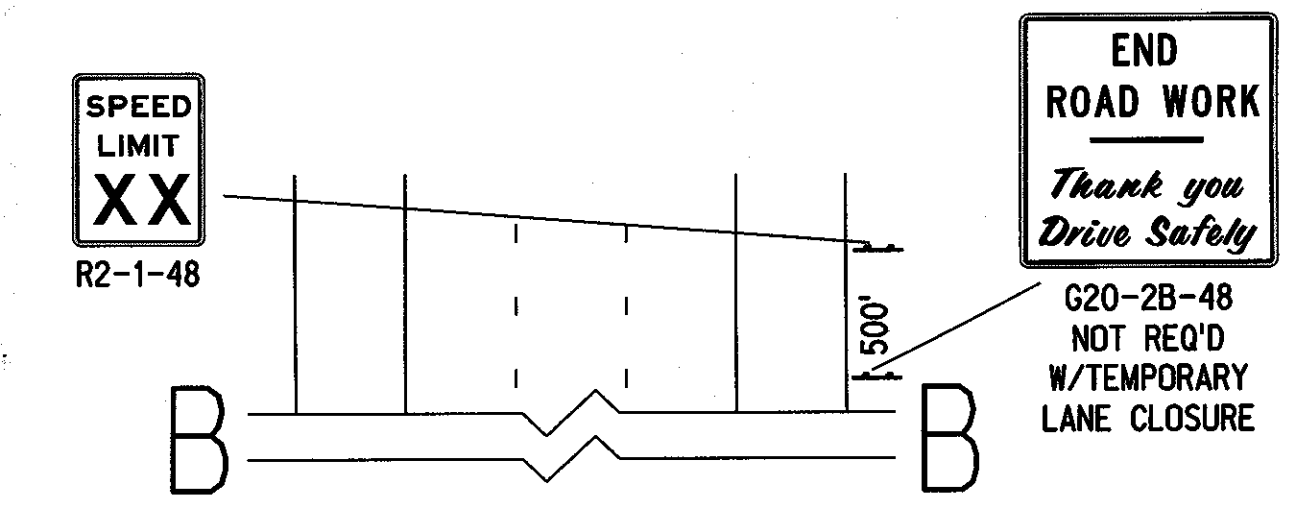
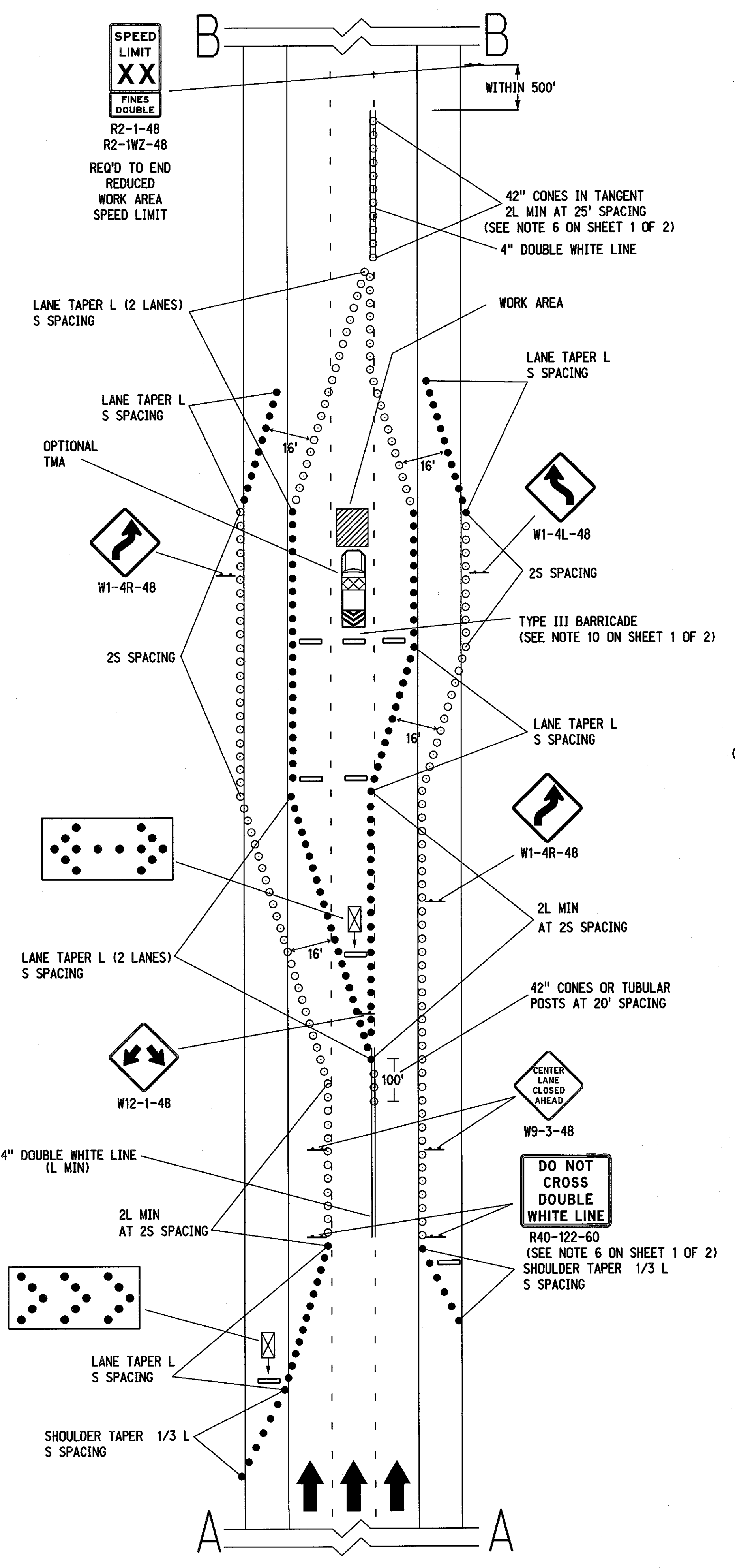
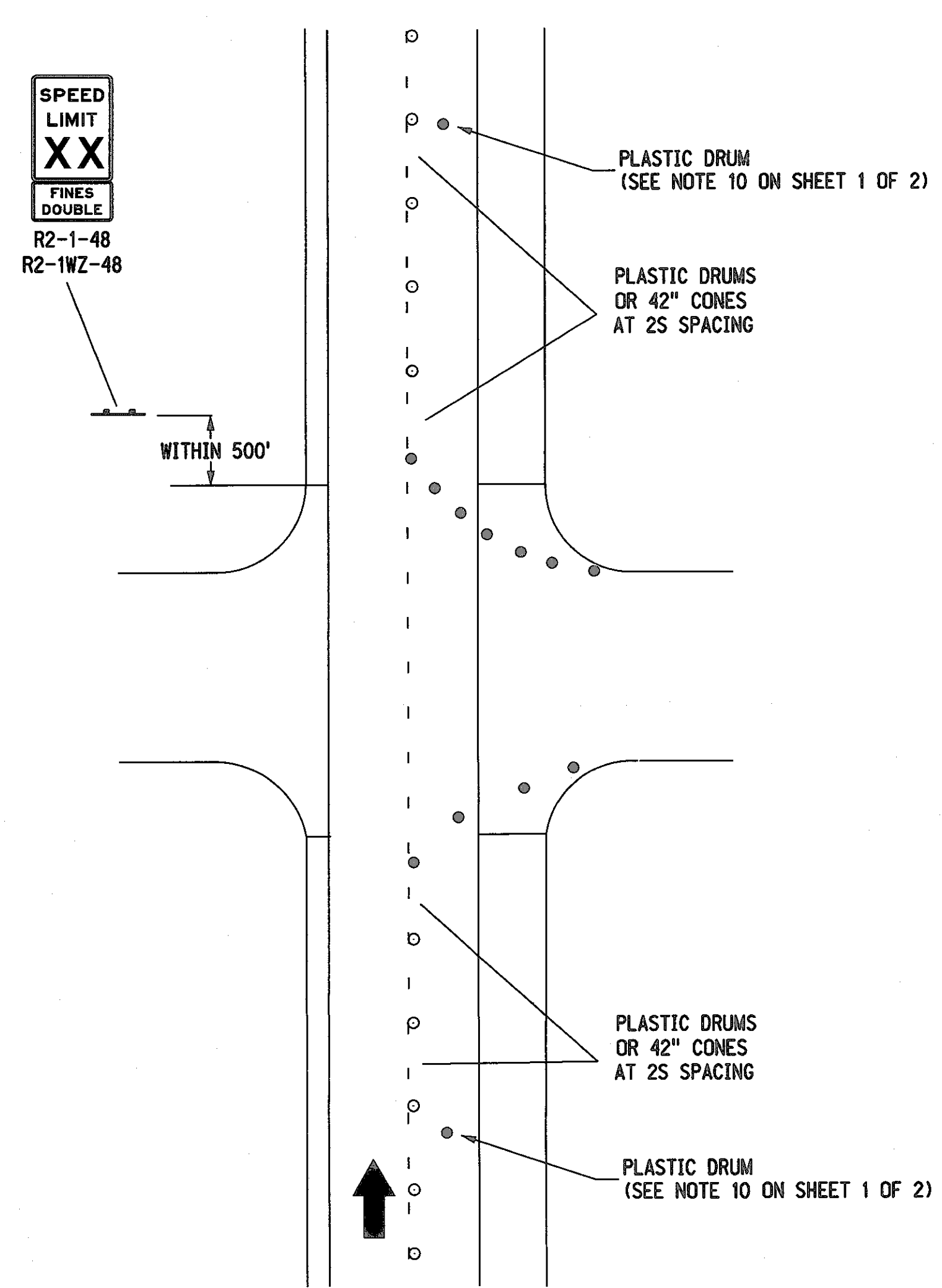
Computer: DRCONSTRUCTO

User: dor17005

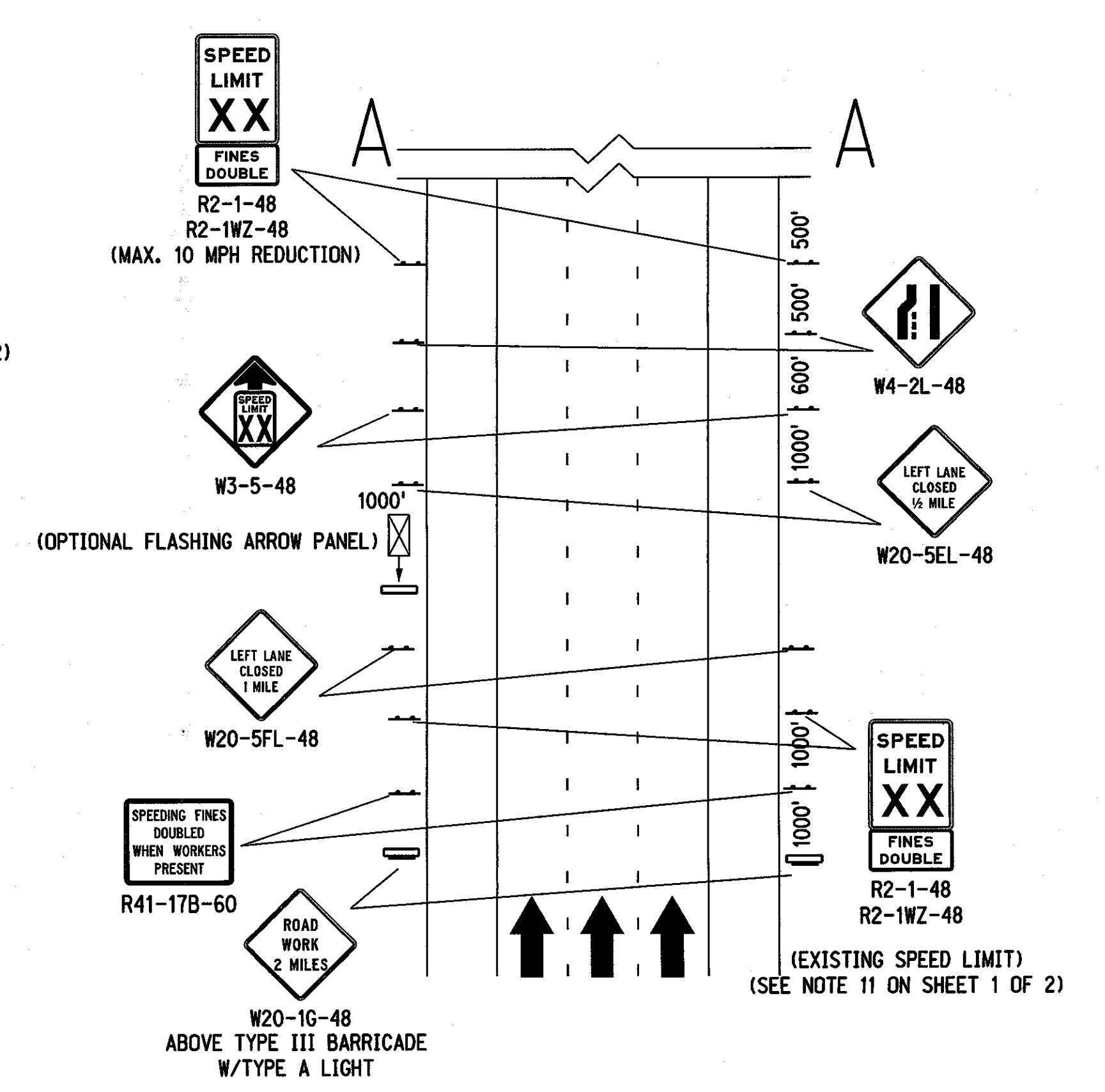
Date: 30-MAY-2014 15:02

File: 426790pset11e.dgn
Scale: 1:100

SIDE ROAD ENTRY WITHIN LANE CLOSURE



CENTER LANE CLOSURE



TAPER FORMULA

$L = S \times W$ FOR SPEEDS OF 45 MPH OR MORE.

$L = \frac{WS^2}{60}$ FOR SPEEDS OF 40 MPH OR LESS.

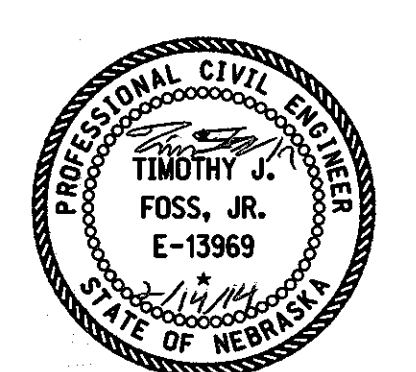
WHERE:

L = MINIMUM LENGTH OF TAPER.

S = NUMERICAL VALUE OF POSTED SPEED LIMIT PRIOR TO WORK.

W = WIDTH OF OFFSET (LANE WIDTH).

- LEGEND**
- FLASHING ARROW PANEL
 - TYPE III BARRICADE
 - REFLECTORIZED PLASTIC DRUM
 - REFLECTORIZED PLASTIC DRUM OR 42" REFLECTORIZED CONE
 - SINGLE POST SIGN
 - DOUBLE POST SIGN



NEBRASKA DEPARTMENT OF ROADS TRAFFIC ENGINEERING DIVISION			
TYPICAL TRAFFIC CONTROL PLAN			
DESIGNED	TJF	LANE CLOSURE PLAN	(2/2)
REVIEWED		FOR MULTILANE ROADWAYS	
APPROVED	DATE DRAWN	TRAFFIC ENGINEER	DATE
	05/13		

File: wz394-3 r5.dgn
 Scale: 1:100
 Date: 14-FEB-2014 13:26
 User: DOR23027
 Computer: DRTRAFFIC46
 TRAFFIC ENGINEERING DIVISION