

PROJECT NO.	SHEET NO.
RD-129-1(11013)	1
▲ CONTROL NO.	32201
▲ CONTROL NO.	
■ CONTROL NO.	

STATE OF NEBRASKA
DEPARTMENT OF ROADS

PLANS FOR CONSTRUCTION

SOUTH SIOUX CITY -
MISSOURI RIVER
DAKOTA COUNTY

INDEX OF SHEETS

SHEET NO.	
1	TITLE PAGE & SUMMARY OF QUANTITIES
2 - 3	TYPICAL TRAFFIC CONTROL PLAN--LANE CLOSURE PLAN FOR MULTILANE ROADWAYS

STANDARD PLANS

920-R6 (3 SHEETS) TRAFFIC CONTROL, CONSTRUCTION AND MAINTENANCE

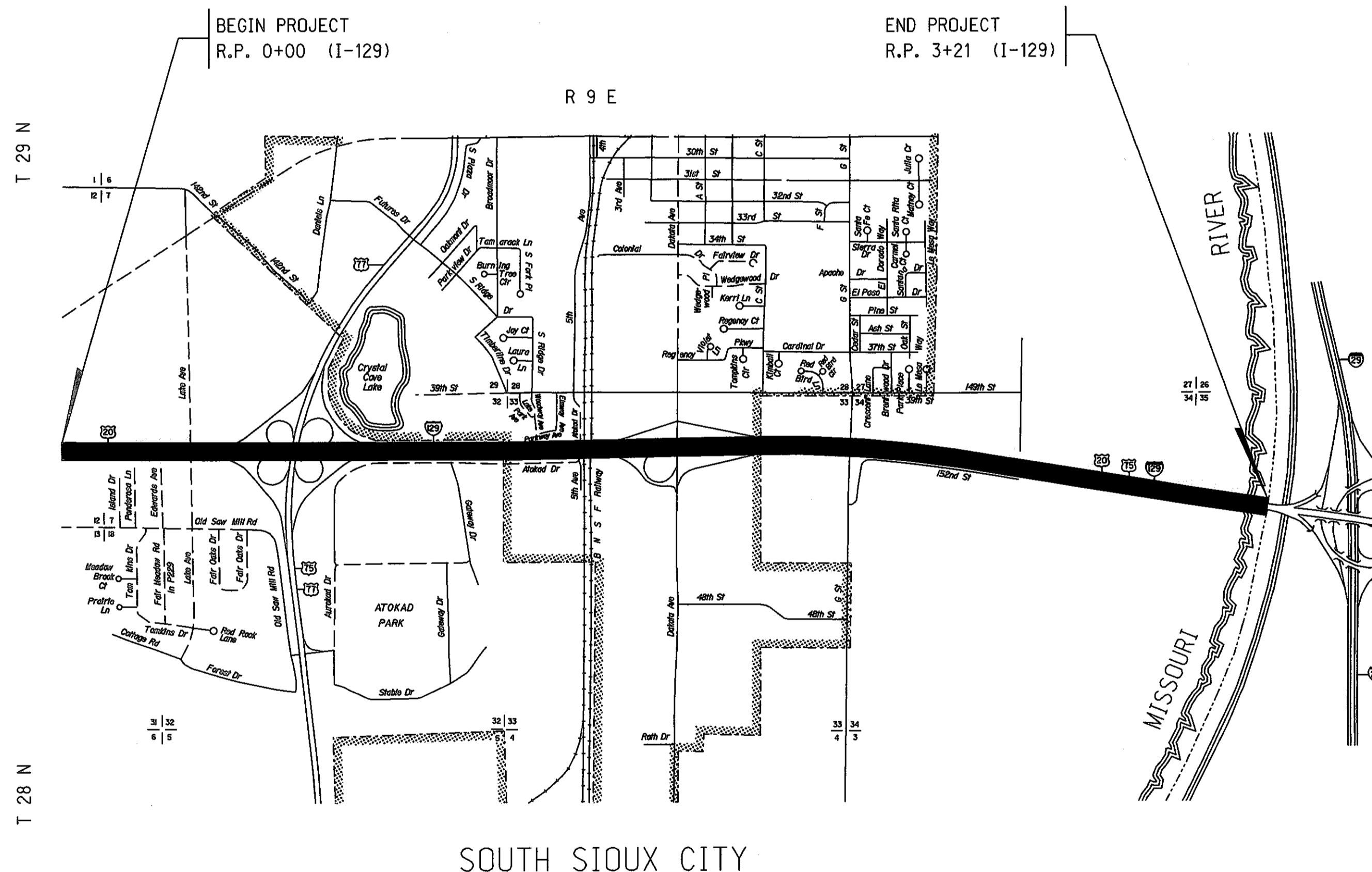
THE 2007 EDITION OF THE NEBRASKA STANDARD SPECIFICATIONS AND THE SPECIAL PROVISIONS APPLY TO THIS PROJECT.

THE WORK ON THIS PROJECT CONSISTS OF GROUPS	
8-SPECIALTY	
▲ GROUPS 8 ARE INCLUDED	IN THE LETTING OF JULY 31, 2014
▲ GROUPS ARE INCLUDED	IN THE LETTING OF
■ GROUPS ARE INCLUDED	IN THE LETTING OF

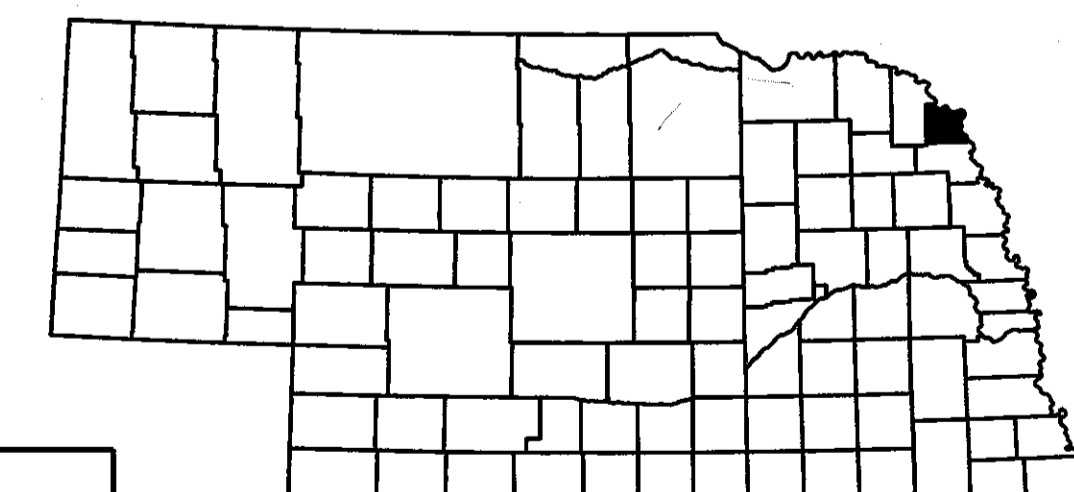
SUMMARY OF QUANTITIES

SPECIALTY ITEMS
GROUP 8

ITEM	QUANTITY	UNITS
BARRICADE, TYPE II	1,650.000	BDAY
BARRICADE, TYPE III	62.000	BDAY
TEMPORARY SIGN DAY	140.000	EACH
SIGN DAY	351.000	EACH
FLASHING ARROW PANEL	10.000	DAY
MOBILIZATION	1.000	LS
CRACK SEALING BITUMINOUS SURFACING	101,000.000	LF



DESIGN DESIGNATION
MAINTENANCE
I-129 TRAFFIC
YEAR: 2014
ADT: 10,460



Computer: DRCONSTRUCTIO
 User: dor17005
 Date: 02-JUN-2014 13:25
 File: 322010pset1file.dgn
 Scale: 1:100

CONVENTIONAL SIGNS

FENCE R.O.W. OR WIRE	
GUARDRAIL	
TRAVELED WAY	
DIKE	
CULVERT	
POWER POLE	
TELEPHONE POLE	
MAILBOX	
RAILROAD TRACKS	
MARSH	
TREE - CONIFEROUS	
TREE - DECIDUOUS	

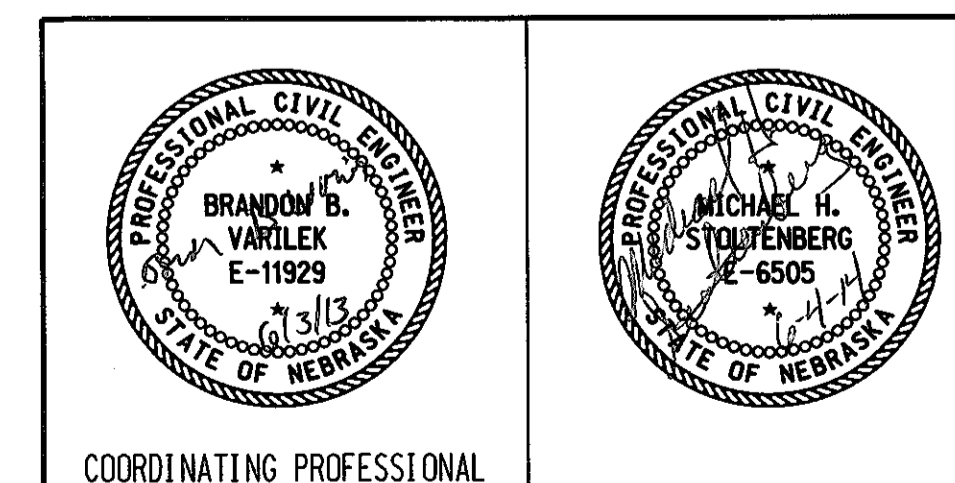
R.O.W. LEGEND

NEW CONTROLLED ACCESS	
PREVIOUS CONTROLLED ACCESS	
LIMITS OF CONSTRUCTION	
PREVIOUS R.O.W.	
NEW R.O.W.	
EXISTING PERMANENT EASEMENT	
TEMPORARY EASEMENT	
EXCESS TAKING	
PERMANENT EASEMENT	
EXISTING RAILROAD EASEMENT	
NEW RAILROAD PERMANENT EASEMENT	
NEW RAILROAD TEMPORARY EASEMENT	

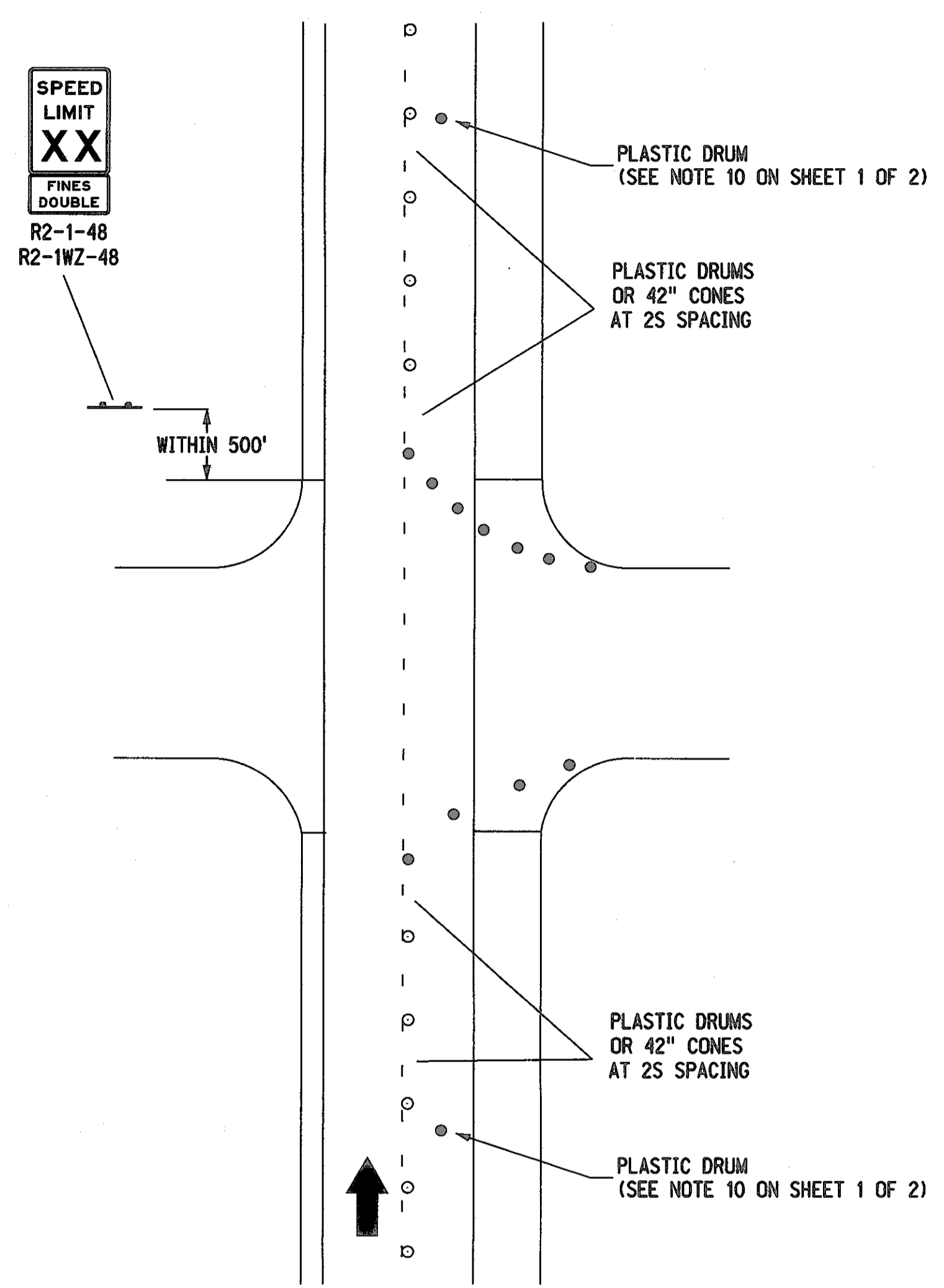
REFERENCE POST NO. 0+00 TO REFERENCE POST NO. 3+21 (I-129)

EXCEPTIONS: FROM STA. TO STA.

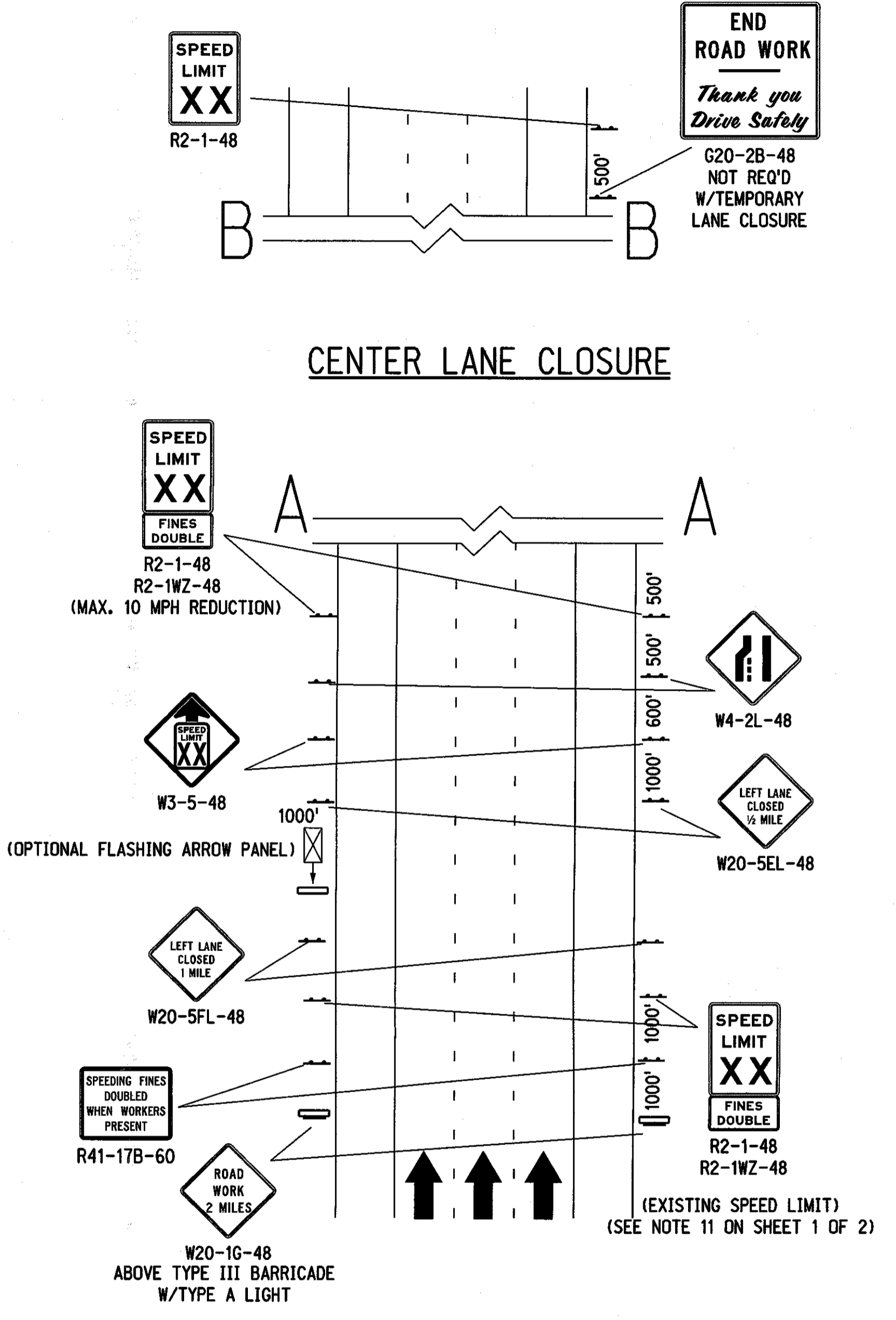
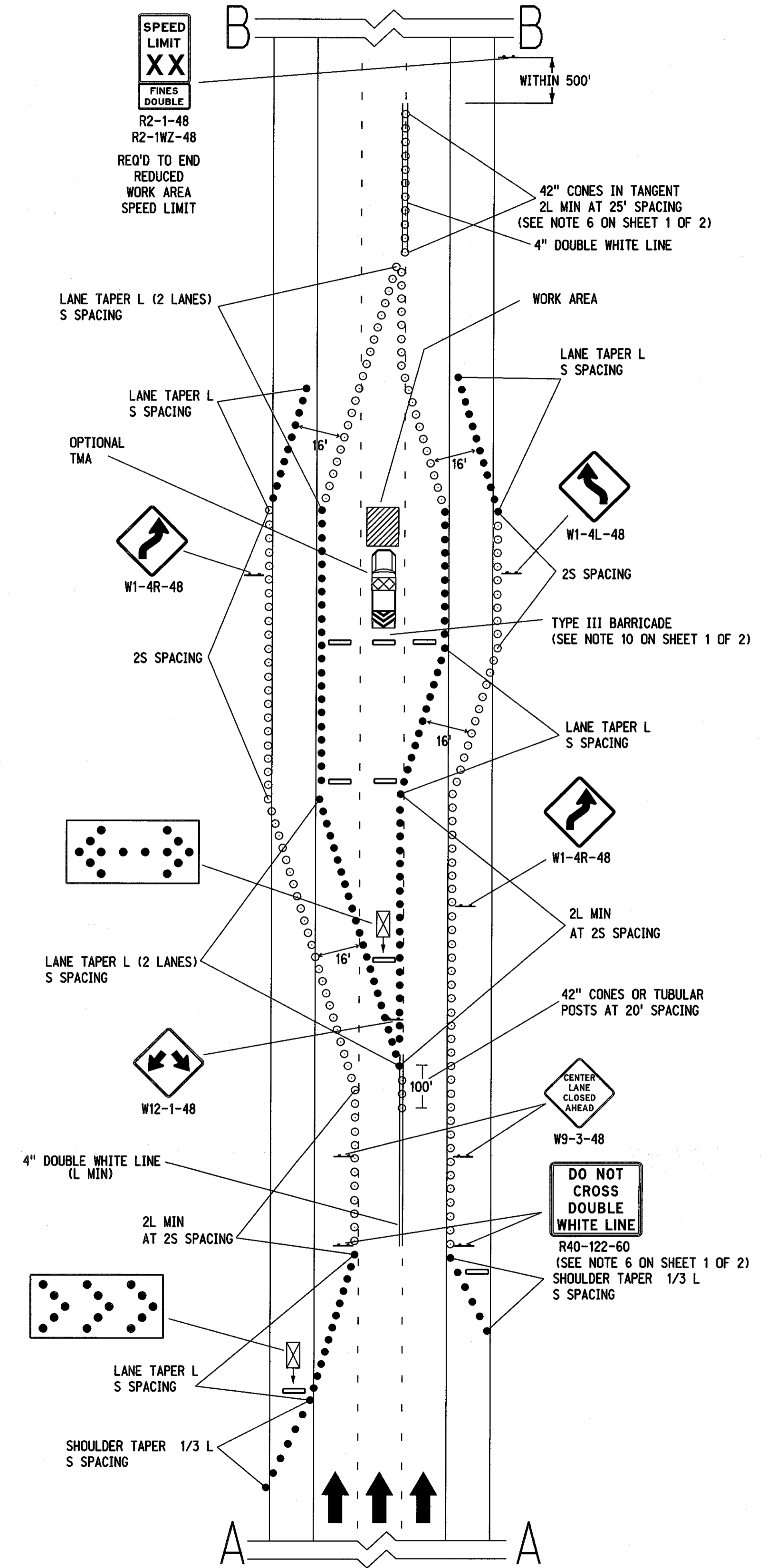
TOTAL NET LENGTH OF PROJECT: FEET MILES



SIDE ROAD ENTRY WITHIN LANE CLOSURE



- LEGEND**
- FLASHING ARROW PANEL
 - TYPE III BARRICADE
 - REFLECTORIZED PLASTIC DRUM
 - REFLECTORIZED PLASTIC DRUM OR 42" REFLECTORIZED CONE
 - SINGLE POST SIGN
 - DOUBLE POST SIGN



CENTER LANE CLOSURE

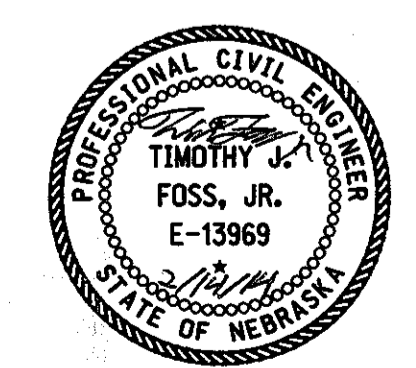
TAPER FORMULA

$L = S \times W$ FOR SPEEDS OF 45 MPH OR MORE.

$L = \frac{WS^2}{60}$ FOR SPEEDS OF 40 MPH OR LESS.

WHERE:

- L = MINIMUM LENGTH OF TAPER.
- S = NUMERICAL VALUE OF POSTED SPEED LIMIT PRIOR TO WORK.
- W = WIDTH OF OFFSET (LANE WIDTH).



NEBRASKA DEPARTMENT OF ROADS TRAFFIC ENGINEERING DIVISION			
TYPICAL TRAFFIC CONTROL PLAN			
DESIGNED	TJF	LANE CLOSURE PLAN	2/2
REVIEWED		FOR MULTILANE ROADWAYS	
APPROVED	DATE DRAWN	TRAFFIC ENGINEER	DATE
	05/13		

File: wz394-r5.dgn
 Scale: 1:100
 Date: 14-FEB-2014 14:10
 User: DOR23027
 Computer: DRTRAFFIC46
 TRAFFIC ENGINEERING DIVISION