

INDEX OF SHEETS

SHEET NO.	
1	TITLE PAGE
2-5	SUMMARY OF QUANTITIES & TYPICAL CROSS SECTION
3	TEMPORARY PAVEMENT MARKING PLAN

STANDARD PLANS

920-R5	(2 SHEETS) TRAFFIC CONTROL, CONSTRUCTION AND MAINTENANCE
922-R8	(2 SHEETS) TRAFFIC CONTROL FOR ASPHALT SURFACING

**STATE OF NEBRASKA
DEPARTMENT OF ROADS
PLANS FOR CONSTRUCTION**

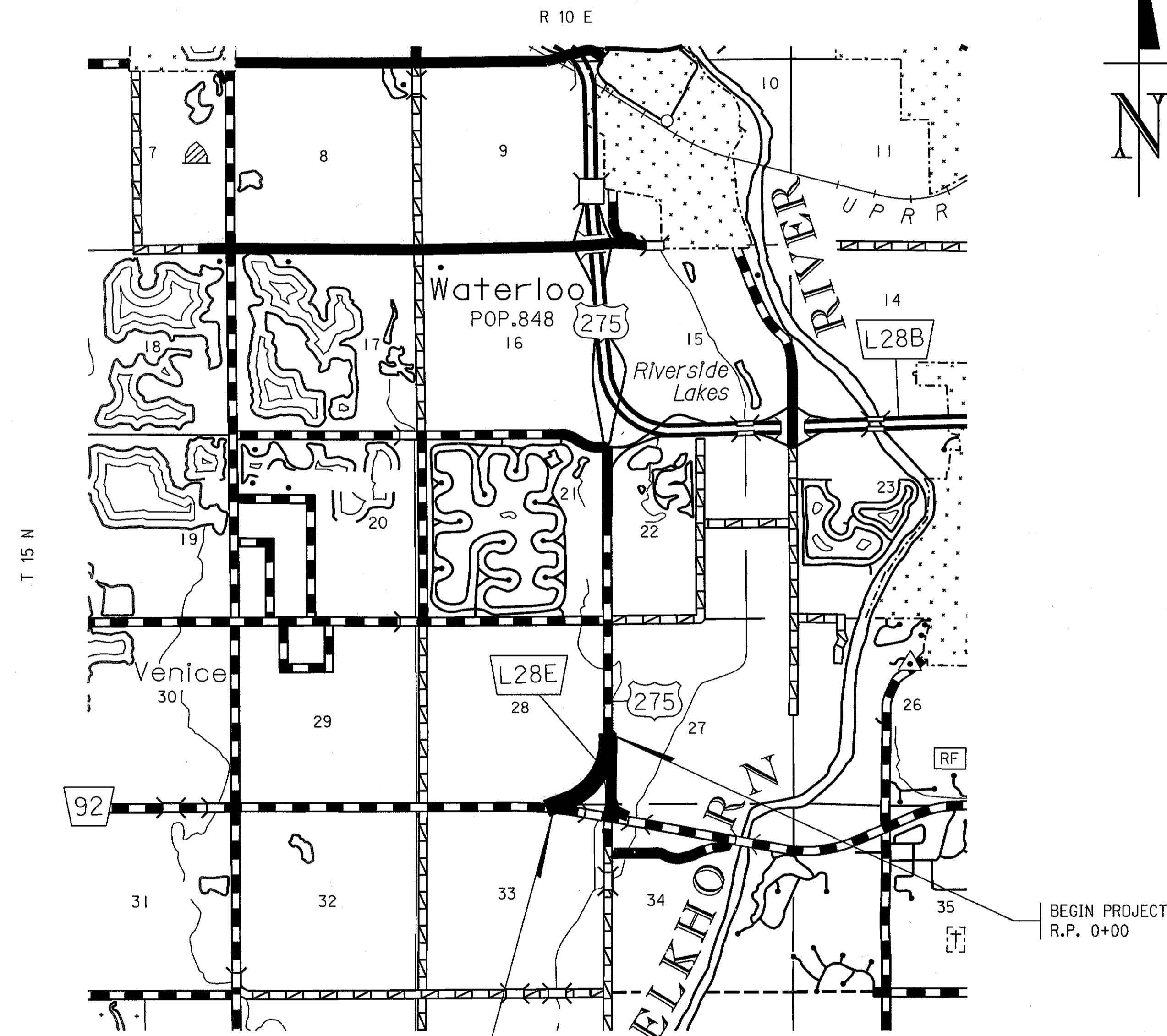
**LINK 28E HWY 92 JCT HWY 275
DOUGLAS COUNTY**

PROJECT NO.	SHEET NO.
AFE-B005	1
▲ CONTRACT I.D. M2TLOE	
▲ CONTRACT I.D.	
■ CONTRACT I.D.	

THE 2007 EDITION OF THE NEBRASKA STANDARD SPECIFICATIONS AND THE SPECIAL PROVISIONS APPLY TO THIS PROJECT.

THE WORK ON THIS PROJECT CONSISTS OF GROUPS	
9-BITUMINOUS	
▲ GROUPS 9	ARE INCLUDED
IN THE LETTING OF APRIL 17, 2014	
▲ GROUPS	ARE INCLUDED
IN THE LETTING OF	
■ GROUPS	ARE INCLUDED
IN THE LETTING OF	

DESIGN DESIGNATION
MAINTENANCE
TRAFFIC
YEAR: 2014
ADT: 7650



CONVENTIONAL SIGNS

FENCE R.O.W. OR WIRE	
GUARDRAIL	
TRAVELED WAY	
DIKE	
CULVERT	
POWER POLE	
TELEPHONE POLE	
MAILBOX	
RAILROAD TRACKS	
MARSH	
TREE - CONIFEROUS	
TREE - DECIDUOUS	

R.O.W. LEGEND

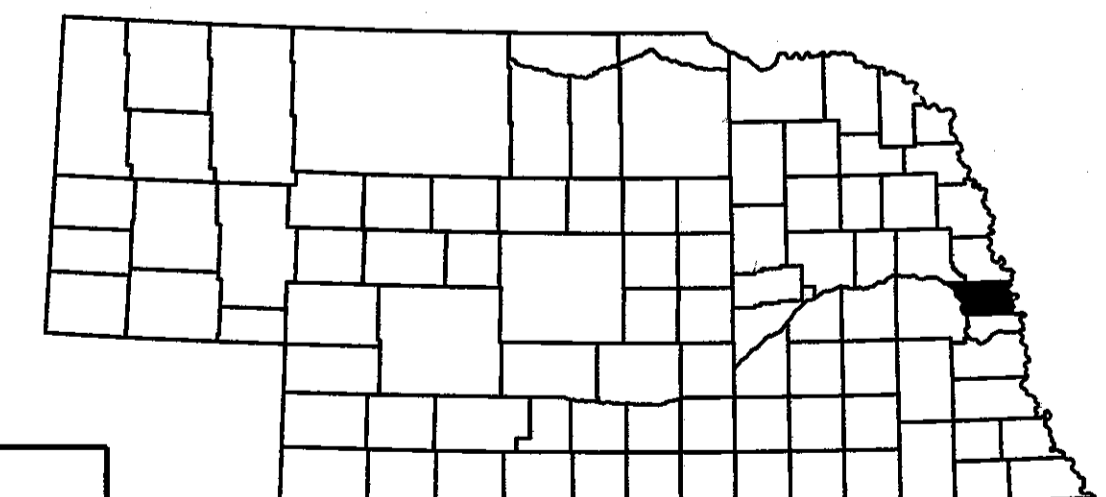
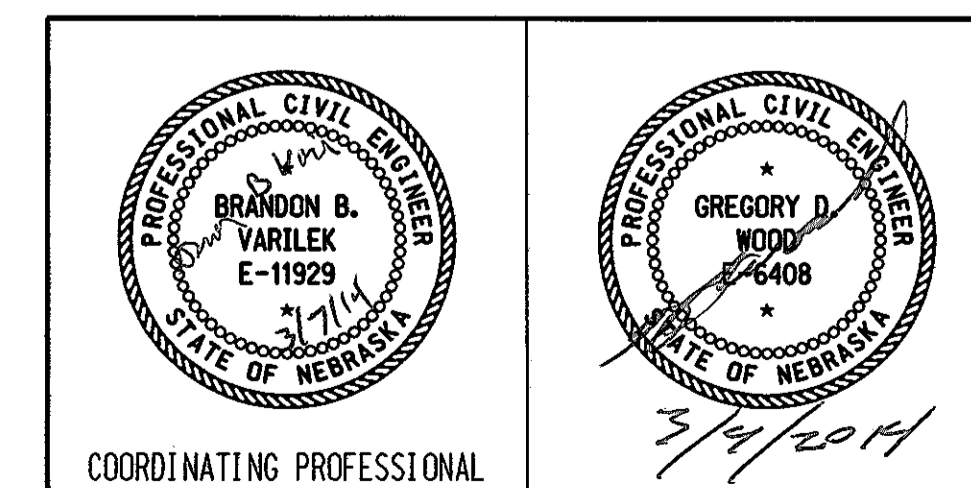
NEW CONTROLLED ACCESS	
PREVIOUS CONTROLLED ACCESS	
LIMITS OF CONSTRUCTION	
PREVIOUS R.O.W.	
NEW R.O.W.	
EXISTING PERMANENT EASEMENT	
TEMPORARY EASEMENT	
EXCESS TAKING	
PERMANENT EASEMENT	
EXISTING RAILROAD EASEMENT	
NEW RAILROAD PERMANENT EASEMENT	
NEW RAILROAD TEMPORARY EASEMENT	

END PROJECT
R.P. 0+53

REFERENCE POST NO. 0+00 TO REFERENCE POST NO. 0+53

EXCEPTIONS: FROM STA. TO STA.

TOTAL NET LENGTH OF PROJECT: 2,798 FEET 0.53 MILES



CONSTRUCTION DIVISION

Computer: DRDESIGN188

User: dor.13161

Date: 28-FEB-2014 14:16

File: m210e0pset111e.dgn
Scale: 1:100

PROJECT NO.	SHEET NO.
AFE-B005	2-5

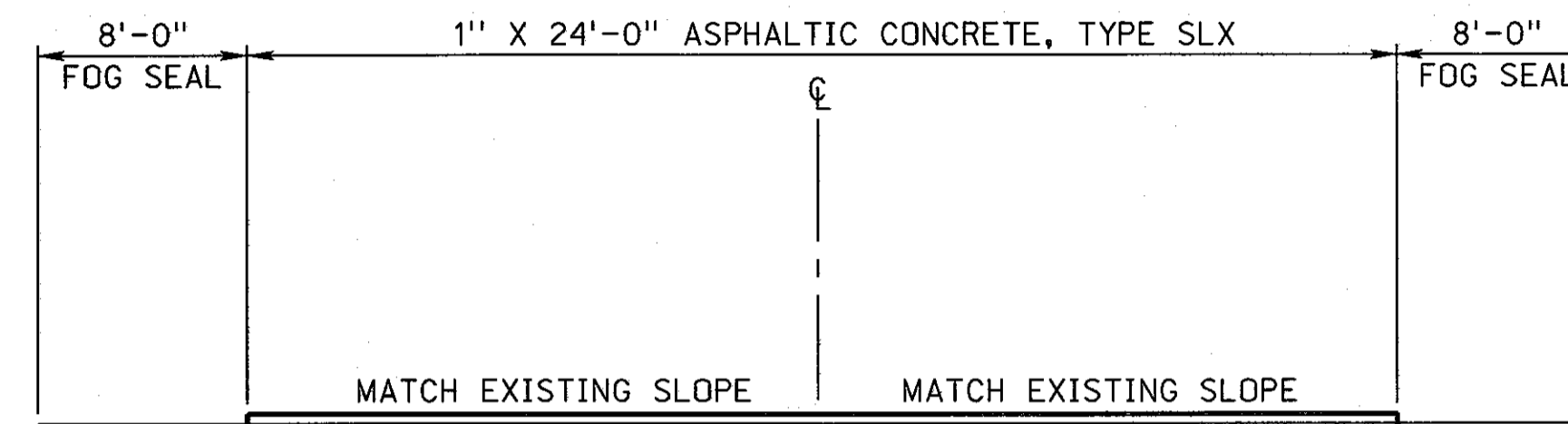
CONTRACT I. D. M2TLOE

SUMMARY OF QUANTITIES

TYPICAL CROSS SECTIONS

BITUMINOUS SURFACING ITEMS GROUP 9

ITEM	QUANTITY	UNITS
BARRICADE, TYPE II	175.000	B DAY
BARRICADE, TYPE III	24.000	B DAY
TEMPORARY SIGN DAY	70.000	EACH
SIGN DAY	192.000	EACH
OVERLAY BROKEN LINES	56.000	STA
OVERLAY SOLID LINES	112.000	STA
FLAGGING	10.000	DAY
FURNISHING AND OPERATING PILOT VEHICLE MOBILIZATION	5.000	DAY
	1.000	LS
HYDRATED LIME/WARM MIX ASPHALT	435.000	EACH
ASPHALTIC CONCRETE, TYPE SLX	410.000	TON
ASPHALTIC CONCRETE FOR PATCHING, TYPE SLX	25.000	TON
PERFORMANCE GRADED BINDER (64-34)	18.270	TON
TACK COAT	1,120.000	GAL
FOG SEAL	500.000	GAL
RENTAL OF LOADER, FULLY OPERATED	50.000	HOUR
RENTAL OF MOTOR GRADER, FULLY OPERATED	50.000	HOUR
RENTAL OF DUMP TRUCK, FULLY OPERATED	50.000	HOUR
RENTAL OF SKID LOADER, FULLY OPERATED	50.000	HOUR
COLD MILLING, CLASS 3	27.984	STA
RAP INCENTIVE PAYMENT	740.000	EACH
ASPHALT PAVEMENT SMOOTHNESS TESTING	1.000	LS



REMOVE APPROX. 7/8" EXISTING BITUMINOUS BY COLD MILLING, CLASS 3

REFERENCE POST TO REFERENCE POST

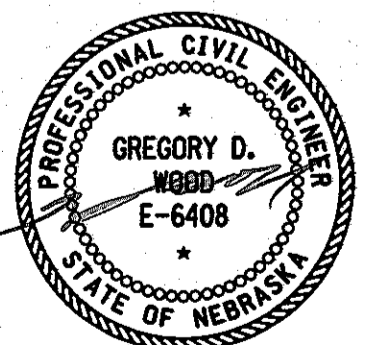
L28E 0+00 - 0+53

TYPES OF ASPHALTIC OIL TO BE USED

TACK COAT: SS-1, SS-1H, CSS-1, OR CSS-1H
FOG SEAL: SS-1H, OR CSS-1H

PERFORMANCE GRADED BINDER

AASHTO DESIGNATION M320



7/7/2014

CONSTRUCTION DIVISION

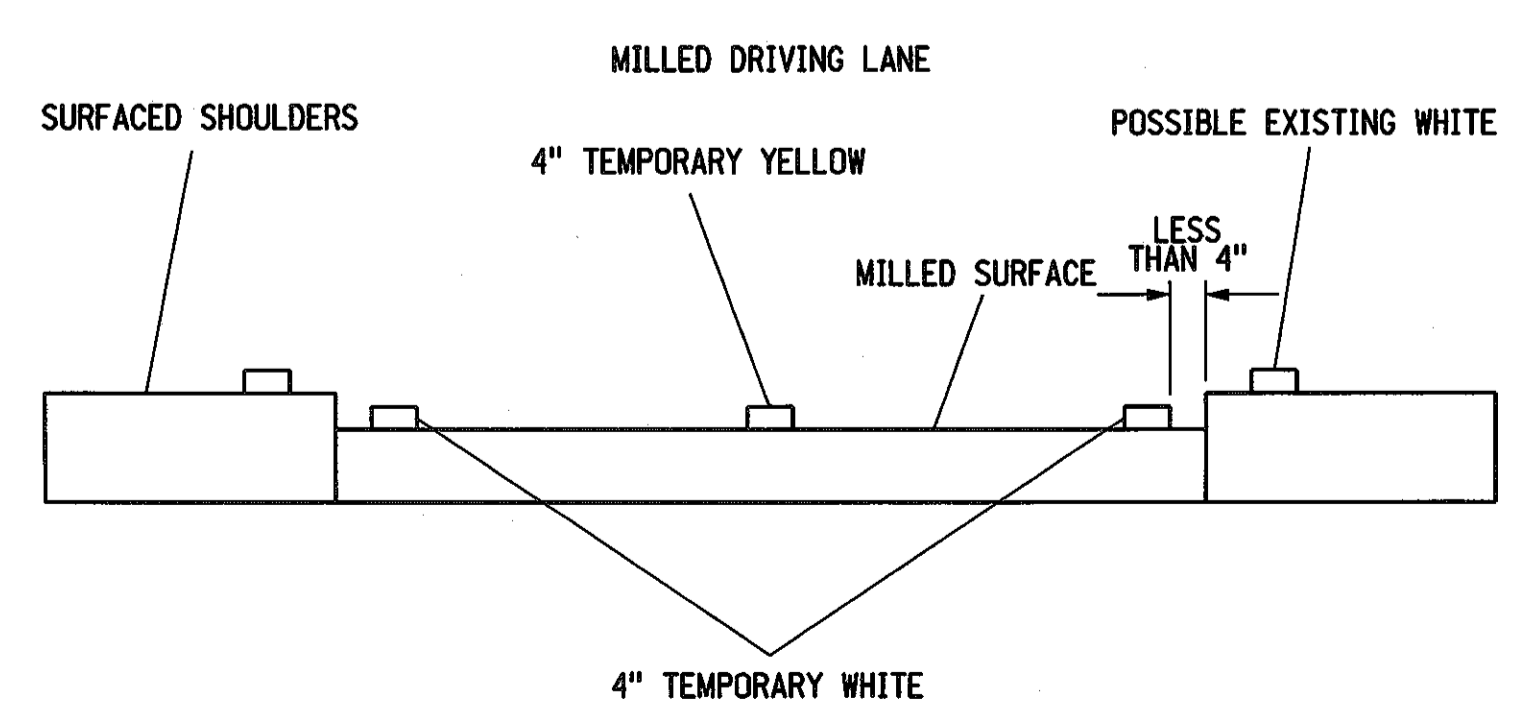
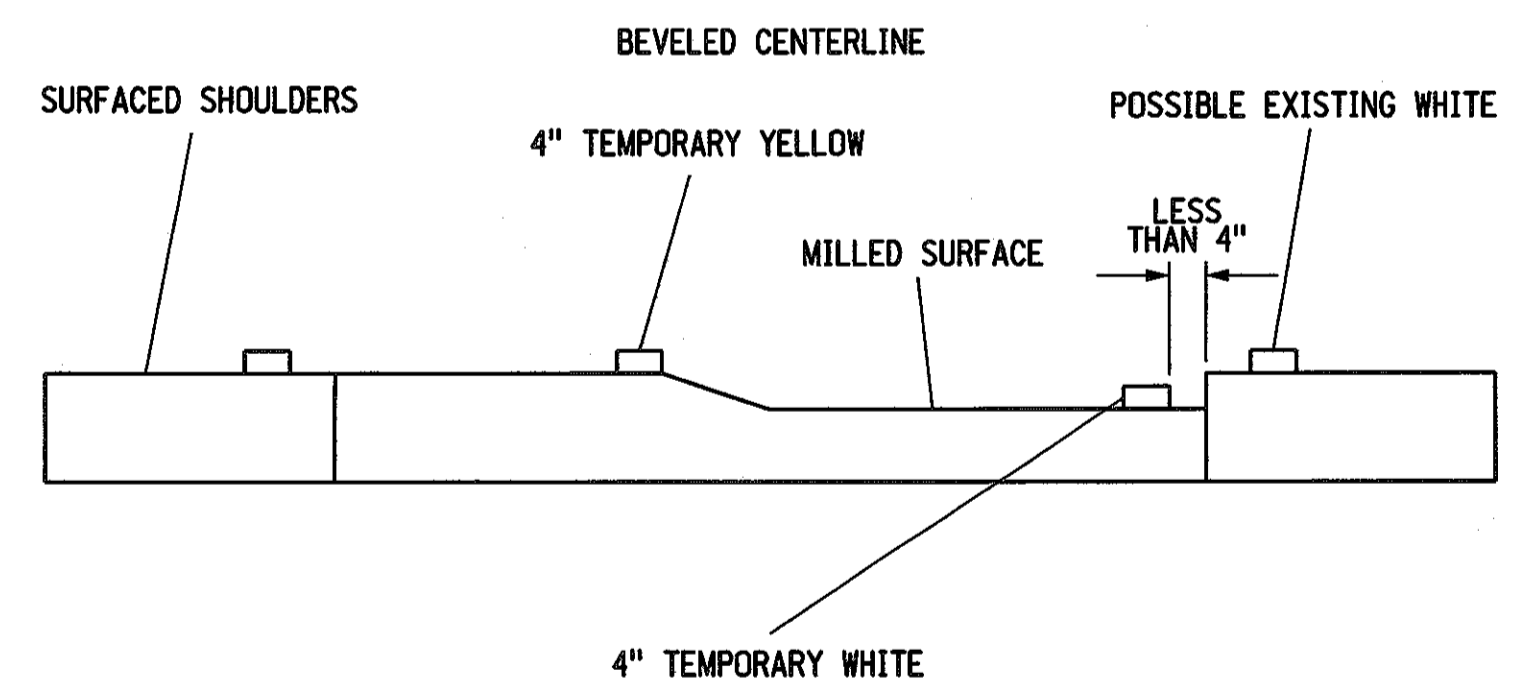
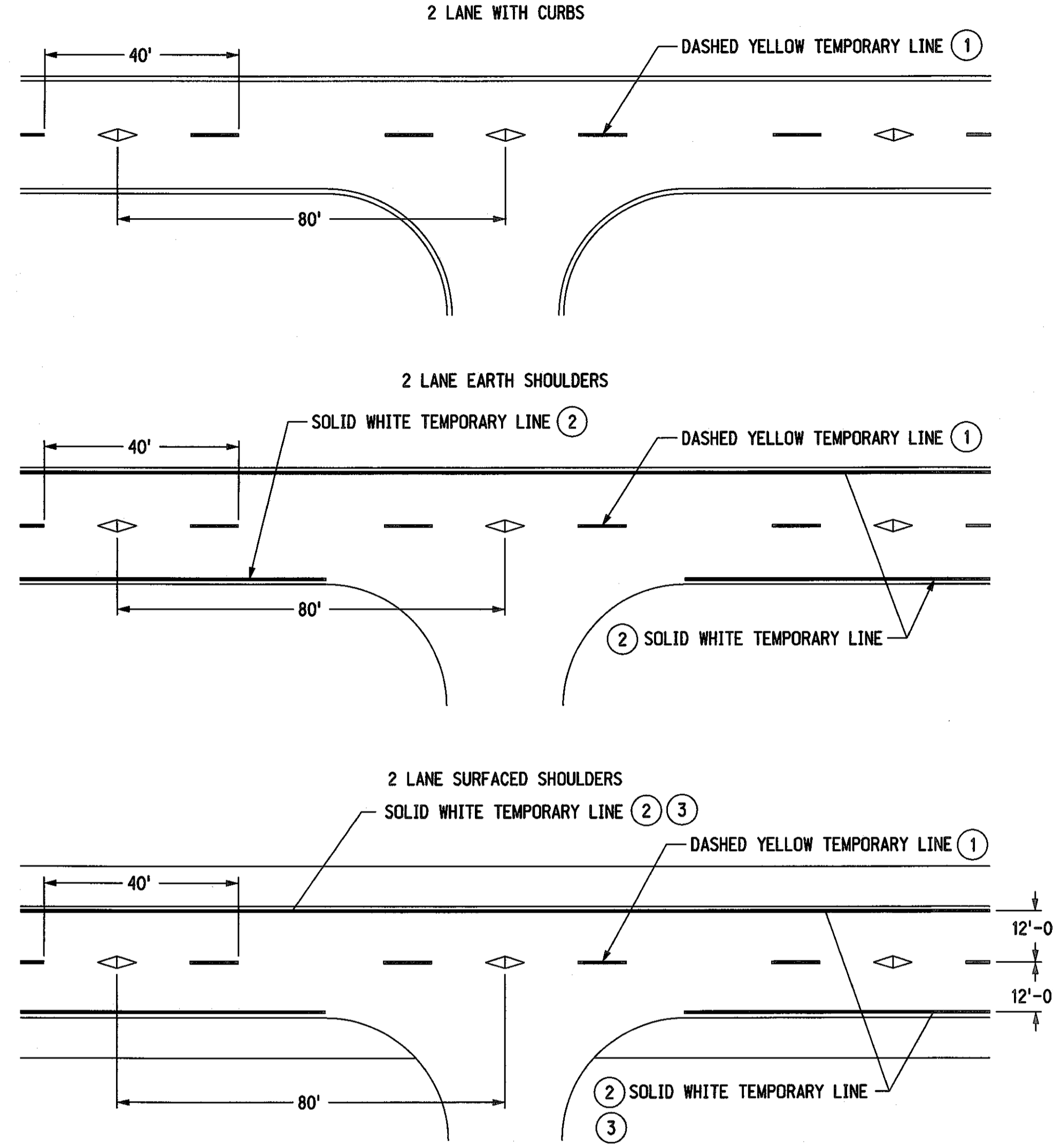
Computer: DRCONSTRUCT04

User: dor13060

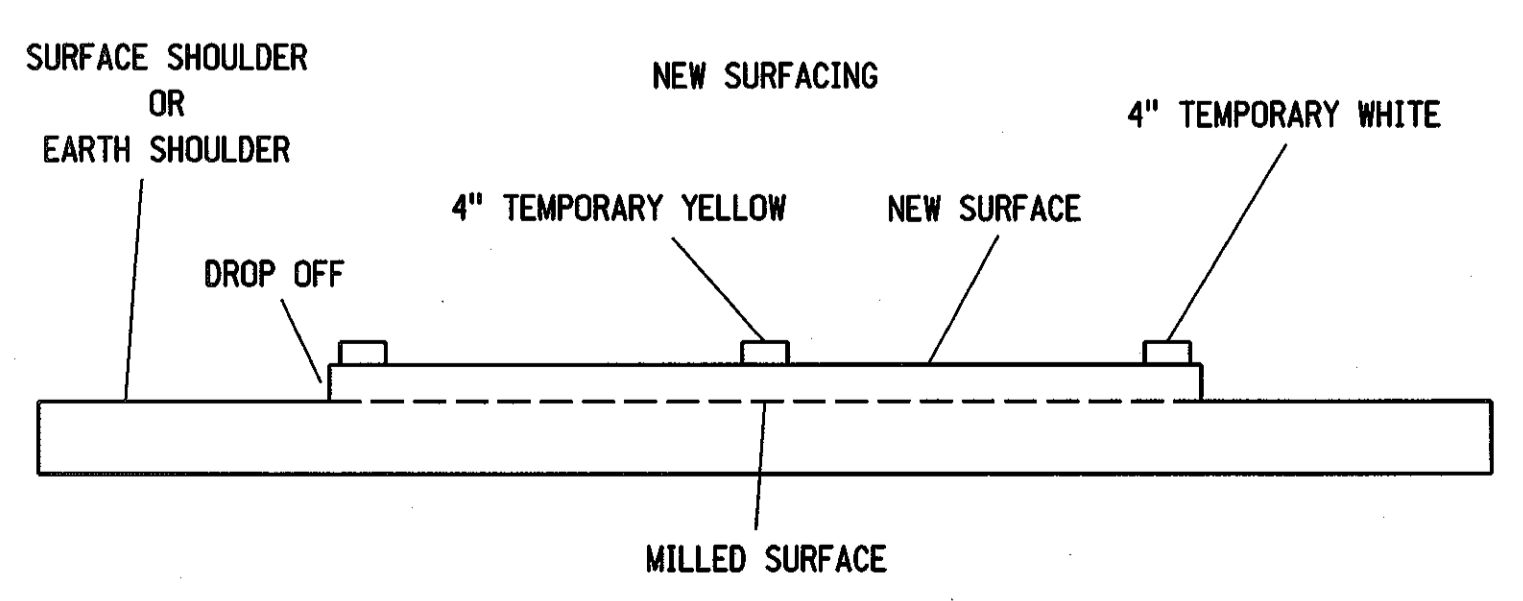
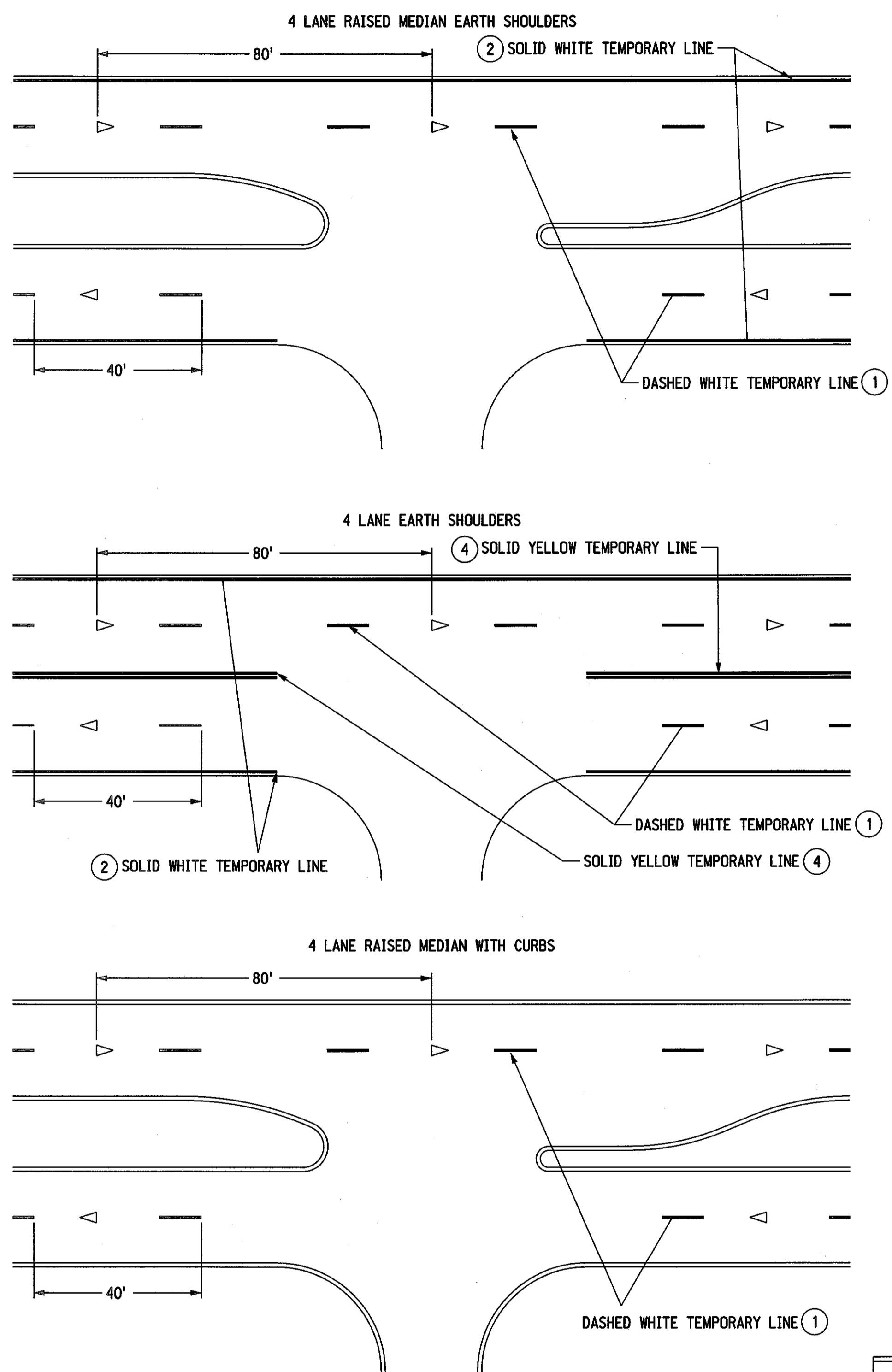
Date: 06-MAR-2014 11:51

File: m2tloepset11e.dgn
Scale: 1:100

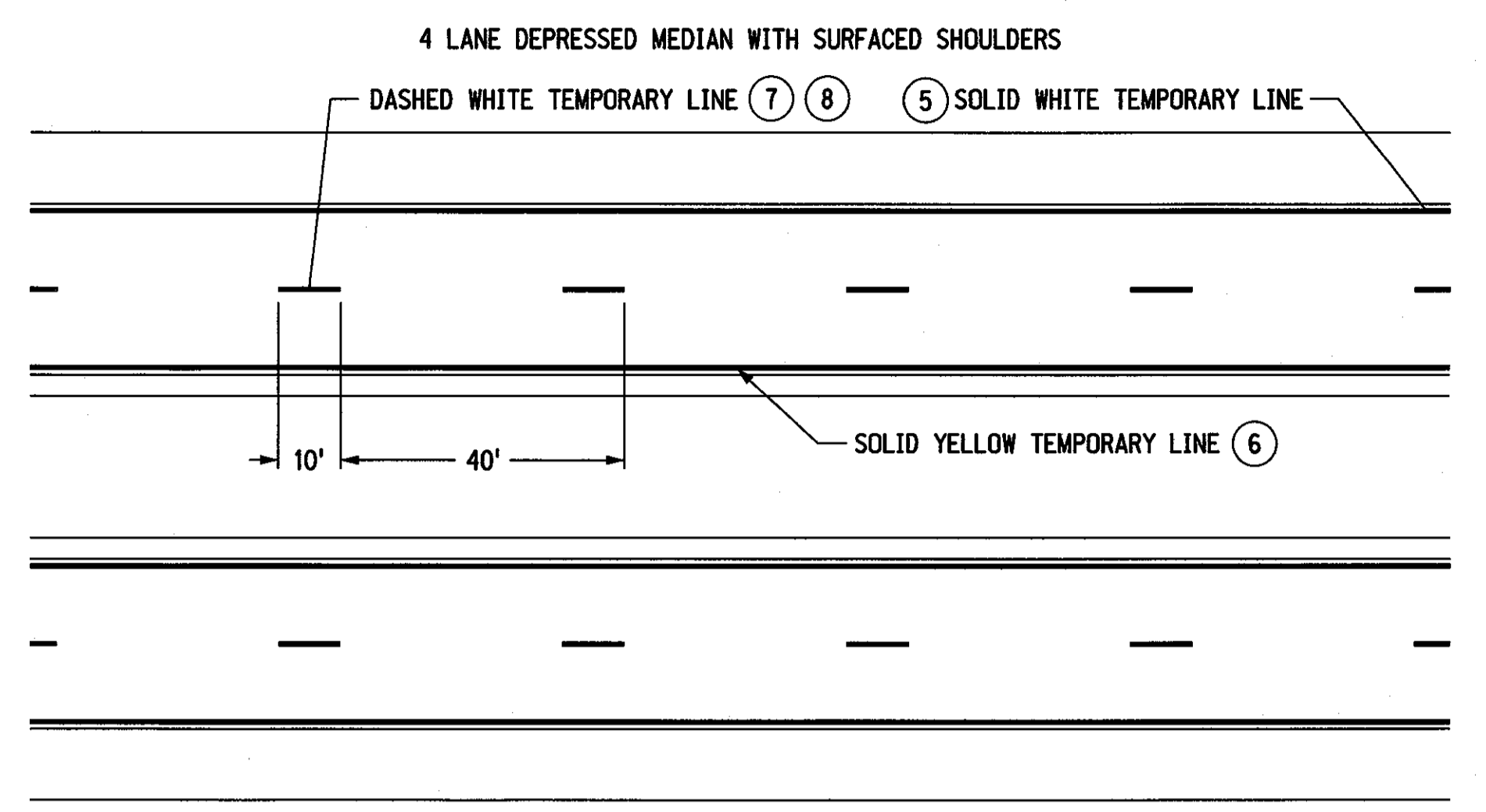
2 LANE ROADWAYS



4 LANE ROADWAYS



FREEWAY/RURAL EXPRESSWAY



NOTES

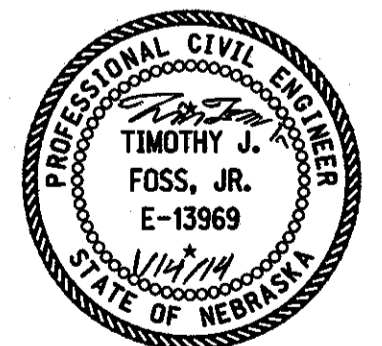
- ① LOWER LAYERS: TEMPORARY DASHED LINE SHALL BE 4" X 10' PAINTED LINE AT 40' INTERVALS OR 4" X 4' TYPE I TAPE LINE AT 40' INTERVALS. TAPE OR PAINT WILL BE SUPPLEMENTED WITH AN OVERLAY MARKER EVERY 80 FEET.
 - OVERLAY MARKERS ARE NOT REQUIRED ON MILLED SURFACES, HYDRATED LIME SURFACES AND STABILIZED SURFACES.
- TOP LAYER: BROKEN LINE MARKINGS
 - INSTALL 4" X 4' TAPE AT 40' INTERVALS SUPPLEMENTED WITH AN OVERLAY MARKER EVERY 80 FEET.
 - OR USE NO TAPE, BUT INSTALL 2 RAISED PAVEMENT MARKERS SPACED 5' APART AT 40' INTERVALS.
- SOLID LINE MARKINGS
 - 4" WIDE PAINTED LINE OR PAVEMENT MARKING TAPE. RAISED PAVEMENT MARKERS MAY BE USED IN LIEU OF PAINT OR TAPE, INSTALLED AT 10' INTERVALS.
- ARMOR COATS
FOG SEALS: 2 OVERLAY MARKERS 5' APART, PER 40 FOOT CYCLE (NO PAINT OR TAPE).
- ② TEMPORARY SOLID LINE SHALL BE 4" WIDE PAINTED LINE.
- ③ EDGE LINE SHALL BE PLACED SO THAT THE OUTSIDE EDGE OF PAINT IS THE REQUIRED DISTANCE FROM CENTERLINE ON THE TOP LIFT
- ④ TEMPORARY CENTERLINE SHALL BE TWO 4" PAINTED LINES SPACED 4" APART, CENTERED ABOUT THE JOINT LINE.
- ⑤ EDGELINE SHALL BE 4" PAINTED LINE. PLACED TO THE LEFT OF JOINT LINE.
- ⑥ ALL LAYERS: EDGELINE SHALL BE PLACED 12'-0" FROM THE CENTER JOINT LINE. (RIGHT OF SHOULDER JOINT LINE WHEN APPLICABLE)
- ⑦ MILLED SURFACE OR LOWER LIFTS: THE TEMPORARY WHITE DASH LINE SHALL BE 4" X 10' MINIMUM PAINTED LINE AT 40' INTERVALS, PLACED TO THE LEFT OF THE JOINT LINE.
- ⑧ TOP LIFT: THE TEMPORARY WHITE DASH LINE SHALL BE 4" IN WIDTH X MINIMUM 8' TO MAXIMUM 10' LENGTH, PLACED 2" TO THE LEFT OF THE JOINT LINE. THE INTERVAL (CYCLE) SHALL BE 40' ± 2" TO ALLOW FOR THE PERMANENT PAVEMENT MARKING.
- ⑨ ALL TEMPORARY PAVEMENT MARKING THAT WILL BE COVERED BY PERMANENT PAVEMENT MARKING SHALL COMPLY WITH THE ALIGNMENT AND LOCATION REQUIREMENTS OF THE FINAL PAVEMENT MARKING MATERIAL. TEMPORARY PAVEMENT MARKINGS THAT ARE NOT COVERED BY THE PERMANENT MARKINGS SHALL BE REMOVED AT THE CONTRACTOR'S EXPENSE.

ROADWAY WIDTH	SHOULDER TYPE	DISTANCE FROM $\frac{1}{2}$ OF ROADWAY TO OUTSIDE EDGE OF PAVEMENT
LESS THAN 24'	SURFACED	EDGE OF LANE
LESS THAN 24'	EARTH	PAVEMENT EDGE
24'	EARTH	PAVEMENT EDGE
24'	SURFACED	12'-0" *
24' TO 28'	EARTH	12'-0" *

*SEE NOTE 3
CENTERLINE MARKING SHALL BE PLACED ON THE "SOUTH" SIDE OF THE CENTER JOINT ON EAST-WEST ROADS AND ON THE "EAST" SIDE OF THE CENTER JOINT ON NORTH-SOUTH ROADS

LEGEND

- ◁ OVERLAY MARKER
- ◁ BIDIRECTIONAL OVERLAY MARKER



NEBRASKA DEPARTMENT OF ROADS TRAFFIC ENGINEERING DIVISION

DESIGNED	DV	TEMPORARY PAVEMENT MARKING PLAN	1/1
REVIEWED	MAN		
DATE DRAWN	8/06	TRAFFIC ENGINEER	DATE