

**INDEX OF SHEETS**

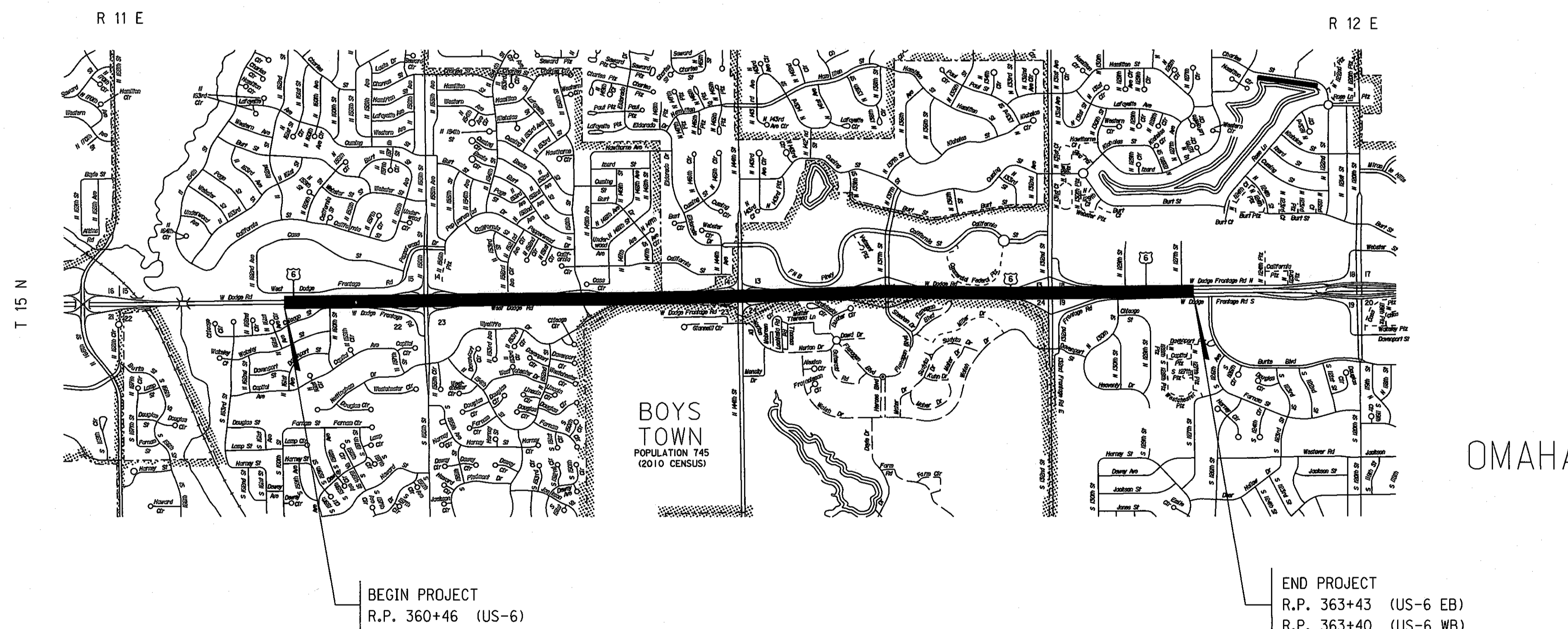
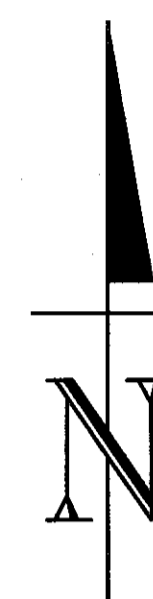
SHEET NO.

- 1 TITLE PAGE
- 2-5 SUMMARY OF QUANTITIES
- 3 - 4 TYPICAL TRAFFIC CONTROL PLAN--LANE CLOSURE PLAN FOR MULTILANE ROADWAYS
- 5 TYPICAL TRAFFIC CONTROL PLAN--WORK IN VICINITY OF EXIT/ON RAMP (INTERSTATE/EXPRESSWAY)

STANDARD PLANS

- 920-R6 (3 SHEETS) TRAFFIC CONTROL, CONSTRUCTION AND MAINTENANCE
- 922-R9 (2 SHEETS) TRAFFIC CONTROL FOR ASPHALT SURFACING
- 924-R1 (3 SHEETS) TYPICAL URBAN TRAFFIC CONTROL PLAN

STATE OF NEBRASKA  
DEPARTMENT OF ROADS  
PLANS FOR CONSTRUCTION  
**US-6**  
**162nd – 126th**  
**OMAHA**  
DOUGLAS COUNTY

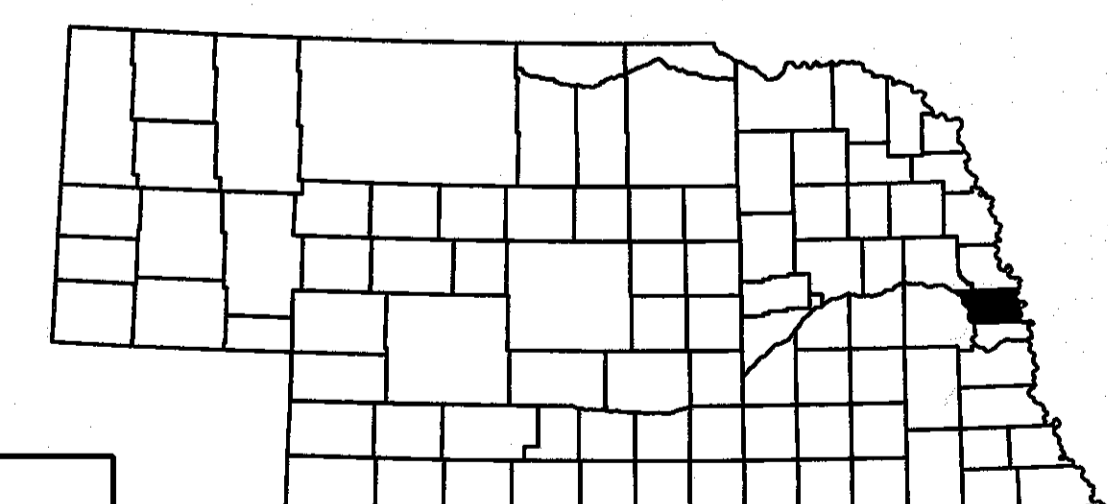


THE WORK ON THIS PROJECT CONSISTS OF GROUPS

8-SPECIALTY

▲ GROUPS <u>8</u> ARE INCLUDED IN THE LETTING OF <u>NOVEMBER 13, 2014</u>
▲ GROUPS _____ ARE INCLUDED IN THE LETTING OF _____
■ GROUPS _____ ARE INCLUDED IN THE LETTING OF _____

DESIGN DESIGNATION  
MAINTENANCE  
TRAFFIC  
YEAR: 2014  
ADT: 103,105



**CONVENTIONAL SIGNS**

- FENCE R.O.W. OR WIRE
- GUARDRAIL
- TRAVELED WAY
- DIKE
- CULVERT
- POWER POLE
- TELEPHONE POLE
- MAILBOX
- RAILROAD TRACKS
- MARSH
- TREE - CONIFEROUS
- TREE - DECIDUOUS

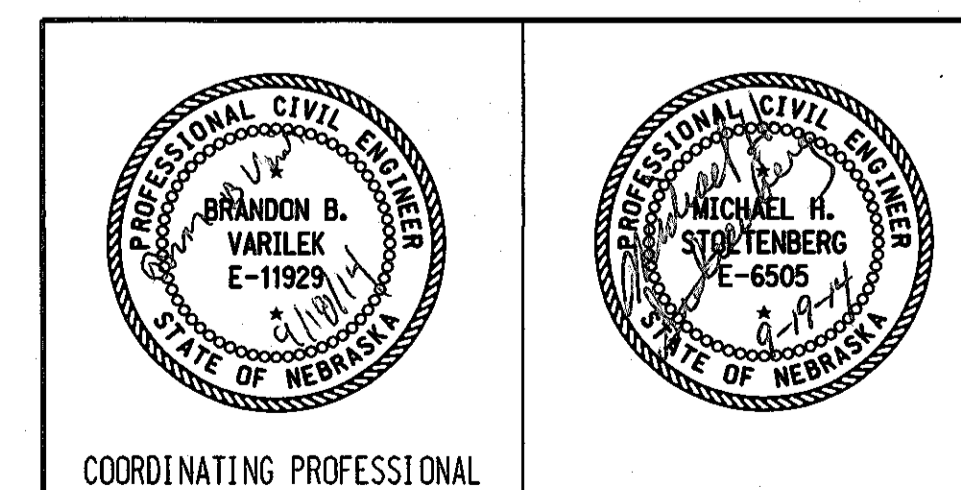
**R.O.W. LEGEND**

- NEW CONTROLLED ACCESS
- PREVIOUS CONTROLLED ACCESS
- LIMITS OF CONSTRUCTION
- PREVIOUS R.O.W.
- NEW R.O.W.
- EXISTING PERMANENT EASEMENT
- TEMPORARY EASEMENT
- EXCESS TAKING
- PERMANENT EASEMENT
- EXISTING RAILROAD EASEMENT
- NEW RAILROAD EASEMENT
- NEW RAILROAD TEMPORARY EASEMENT

REFERENCE POST NO. 360+46 TO REFERENCE POST NO. 363+43 (EB)  
REFERENCE POST NO. 360+46 TO REFERENCE POST NO. 363+40 (WB)

EXCEPTIONS: FROM STA. \_\_\_\_\_ TO STA. \_\_\_\_\_

TOTAL NET LENGTH OF PROJECT: \_\_\_\_\_ FEET \_\_\_\_\_ MILES



CONSTRUCTION DIVISION

File: 225800pset11e.dgn  
Scale: 1:100

CONSTRUCTION DIVISION

# SUMMARY OF QUANTITIES

PROJECT NO.	SHEET NO.
RD-6-7(1055)	2S

C.N. 22580

## SPECIALTY ITEMS GROUP 8

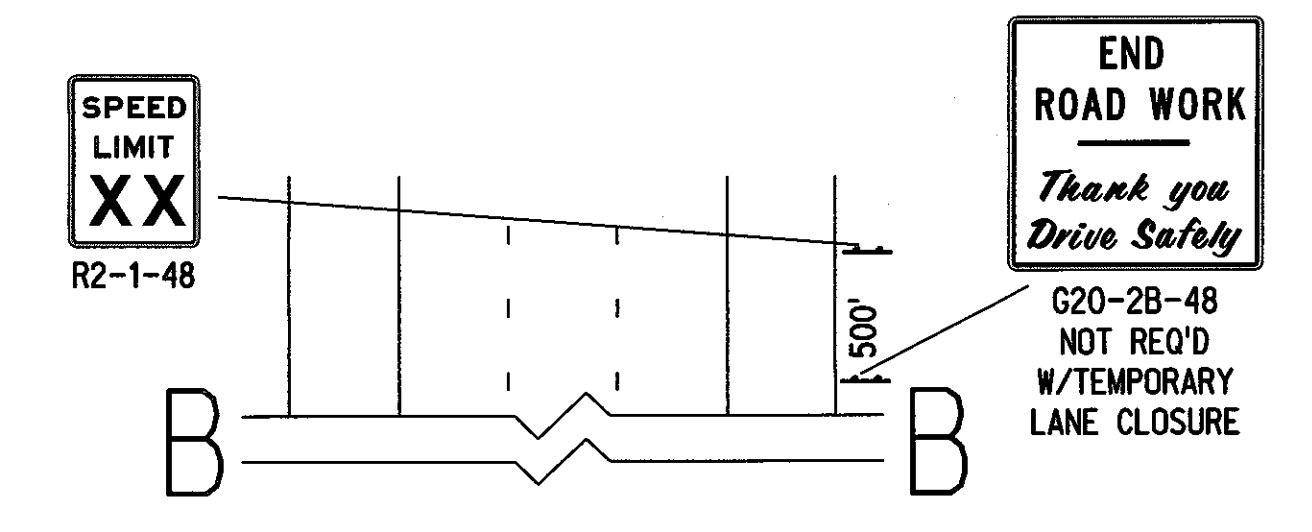
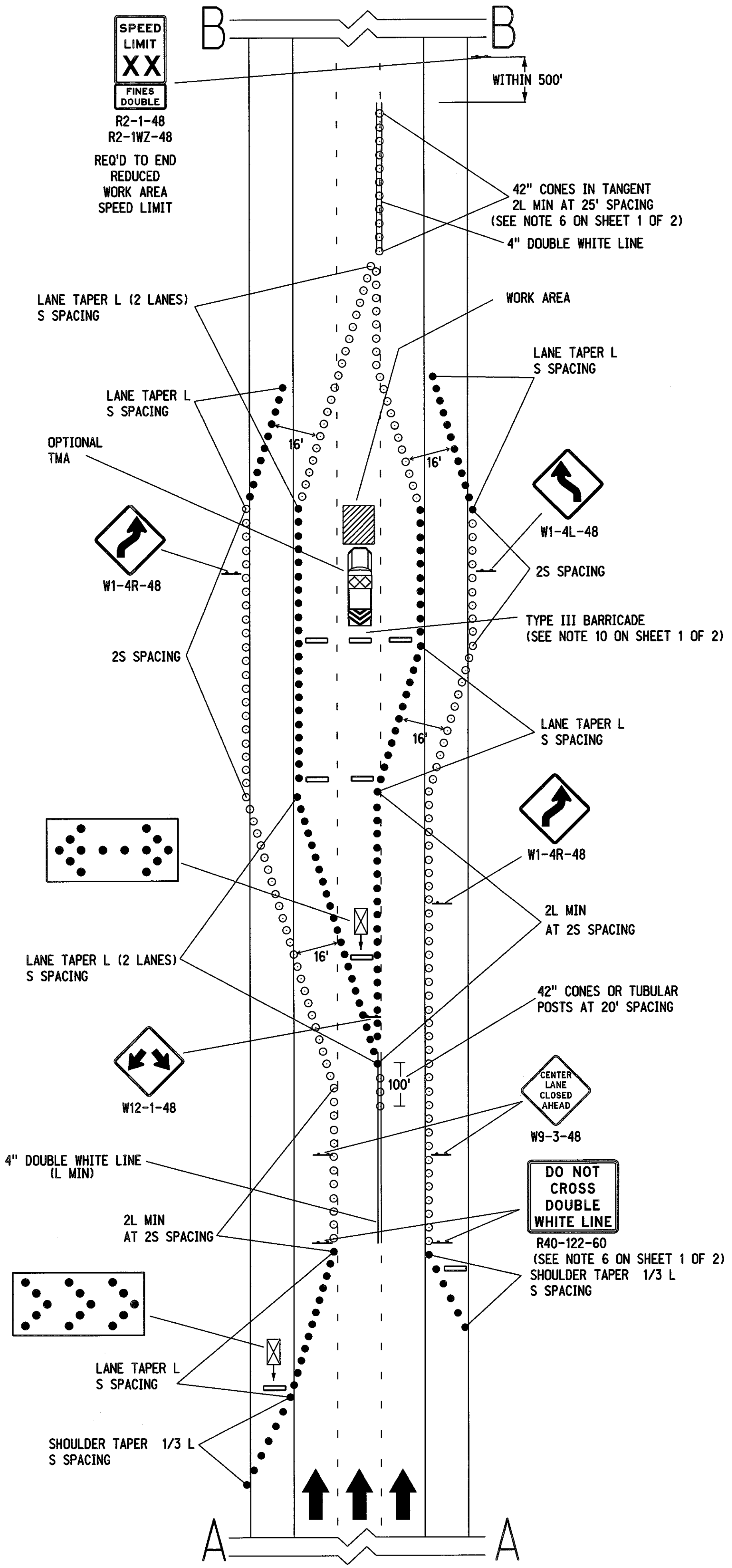
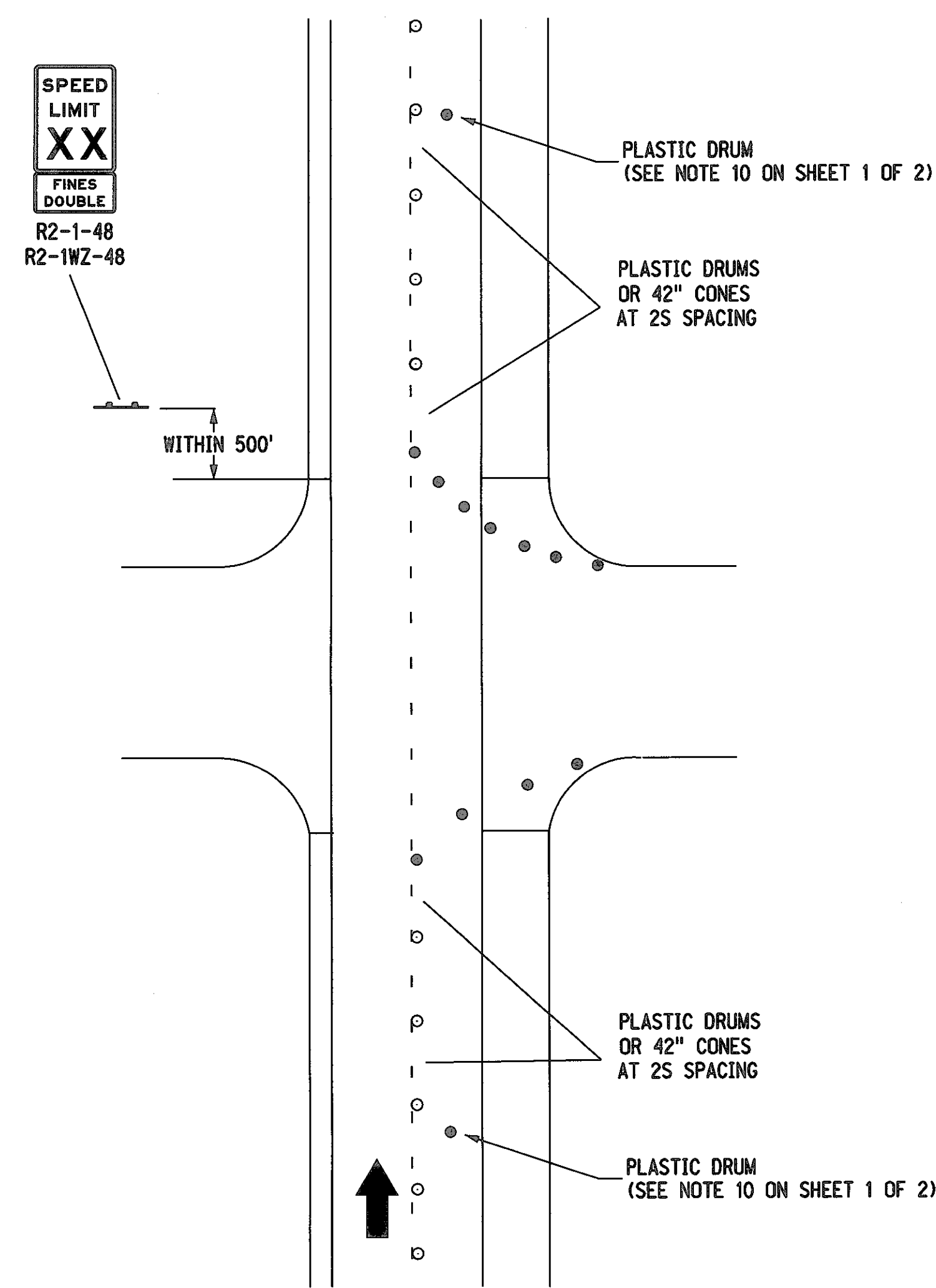
ITEM	QUANTITY	UNITS
BARRICADE, TYPE II	3,400.000	BDAY
BARRICADE, TYPE III	140.000	BDAY
TEMPORARY SIGN DAY	920.000	EACH
FLASHING ARROW PANEL	60.000	DAY
MOBILIZATION	1.000	LS
CRACK SEALING BITUMINOUS SURFACING	244,000.000	LF
ENVIRONMENTAL COMMITMENTS - CONTRACTOR COMPLIANCE	1.000	LS

File: 225800ps.summary.dgn  
Scale: 1:100

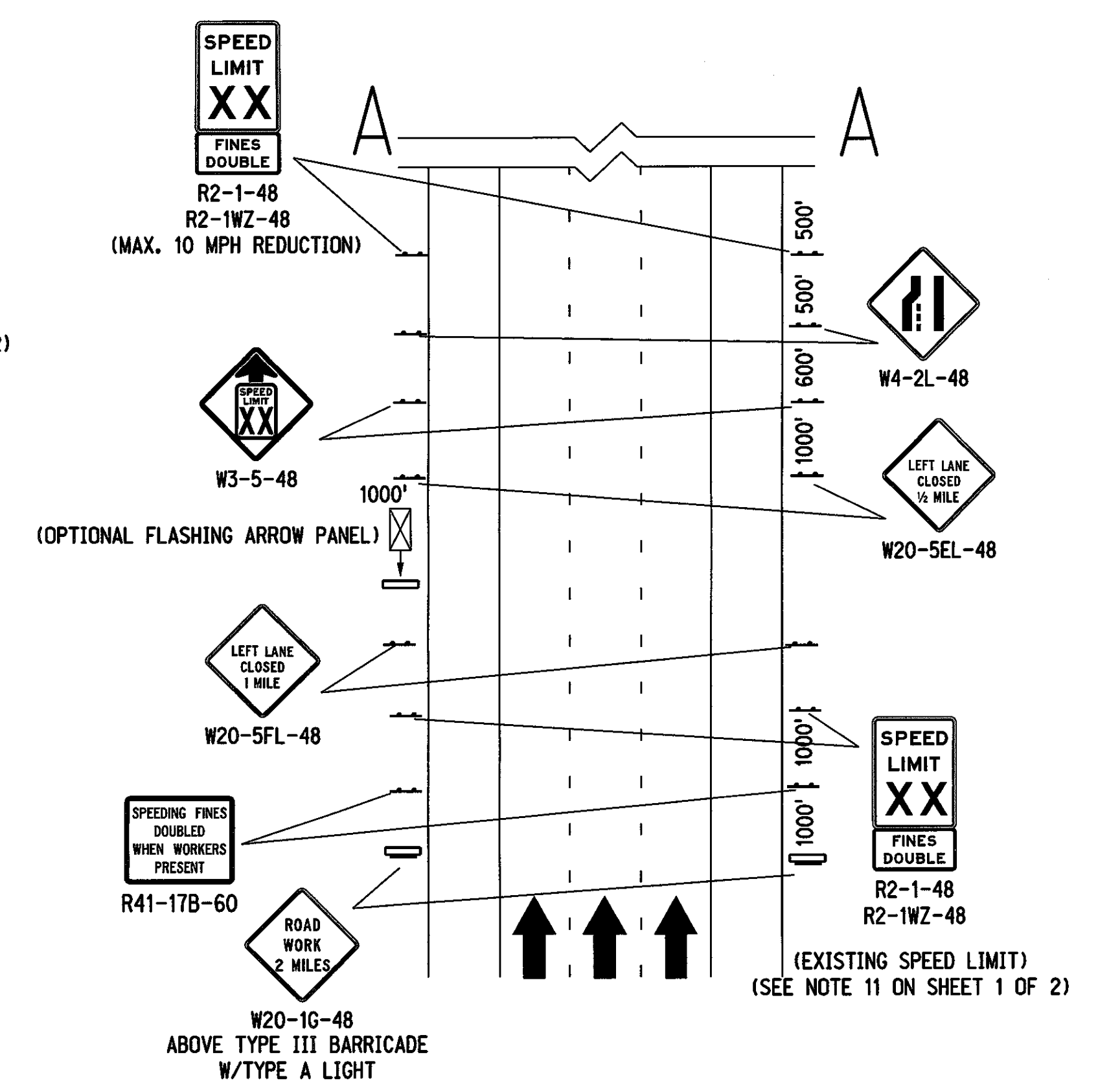




### SIDE ROAD ENTRY WITHIN LANE CLOSURE



### CENTER LANE CLOSURE



### TAPER FORMULA

$L = S \times W$  FOR SPEEDS OF 45 MPH OR MORE.  
 $L = \frac{WS^2}{60}$  FOR SPEEDS OF 40 MPH OR LESS.  
 WHERE:  
 L = MINIMUM LENGTH OF TAPER.  
 S = NUMERICAL VALUE OF POSTED SPEED LIMIT PRIOR TO WORK.  
 W = WIDTH OF OFFSET (LANE WIDTH).

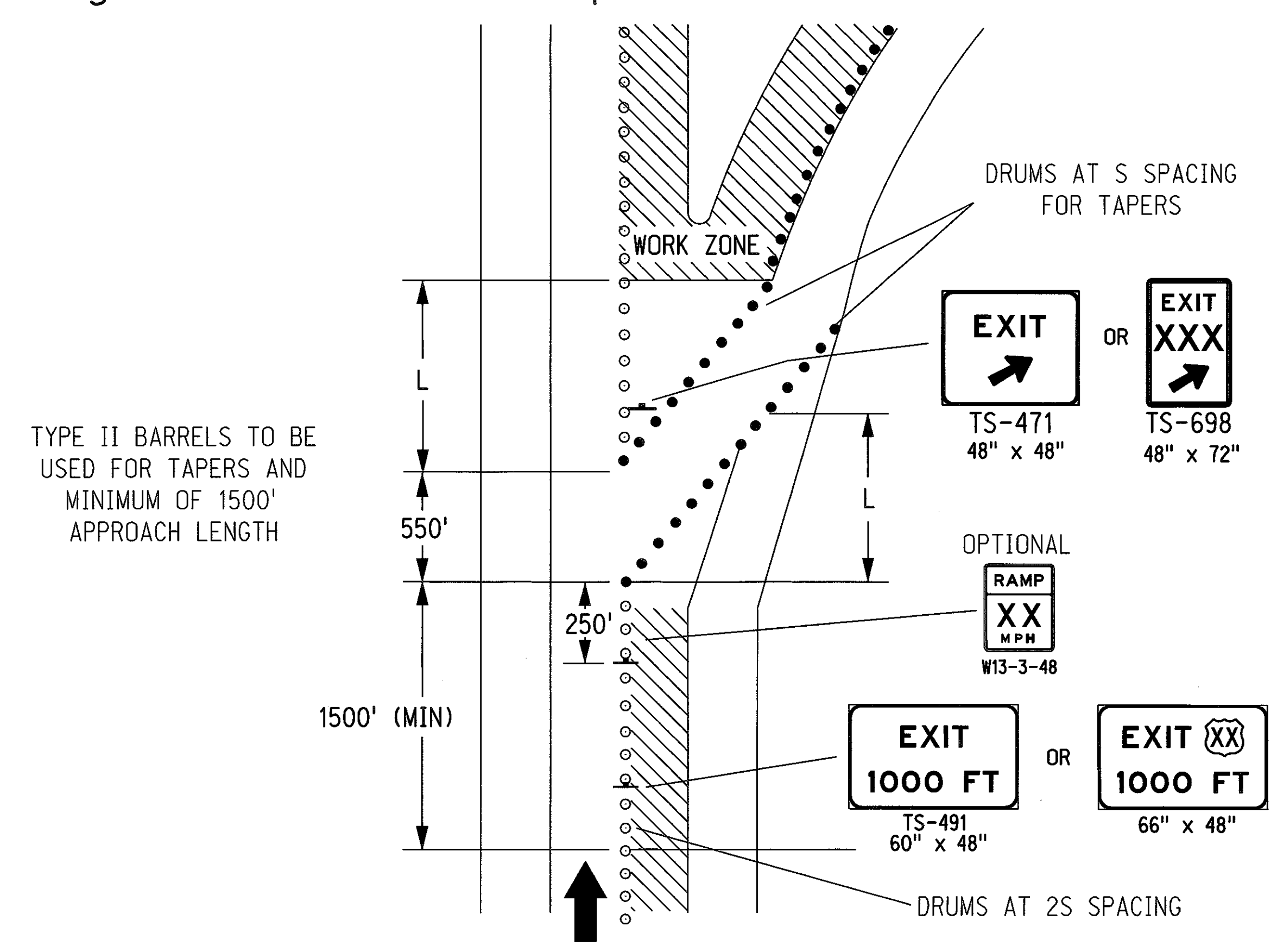
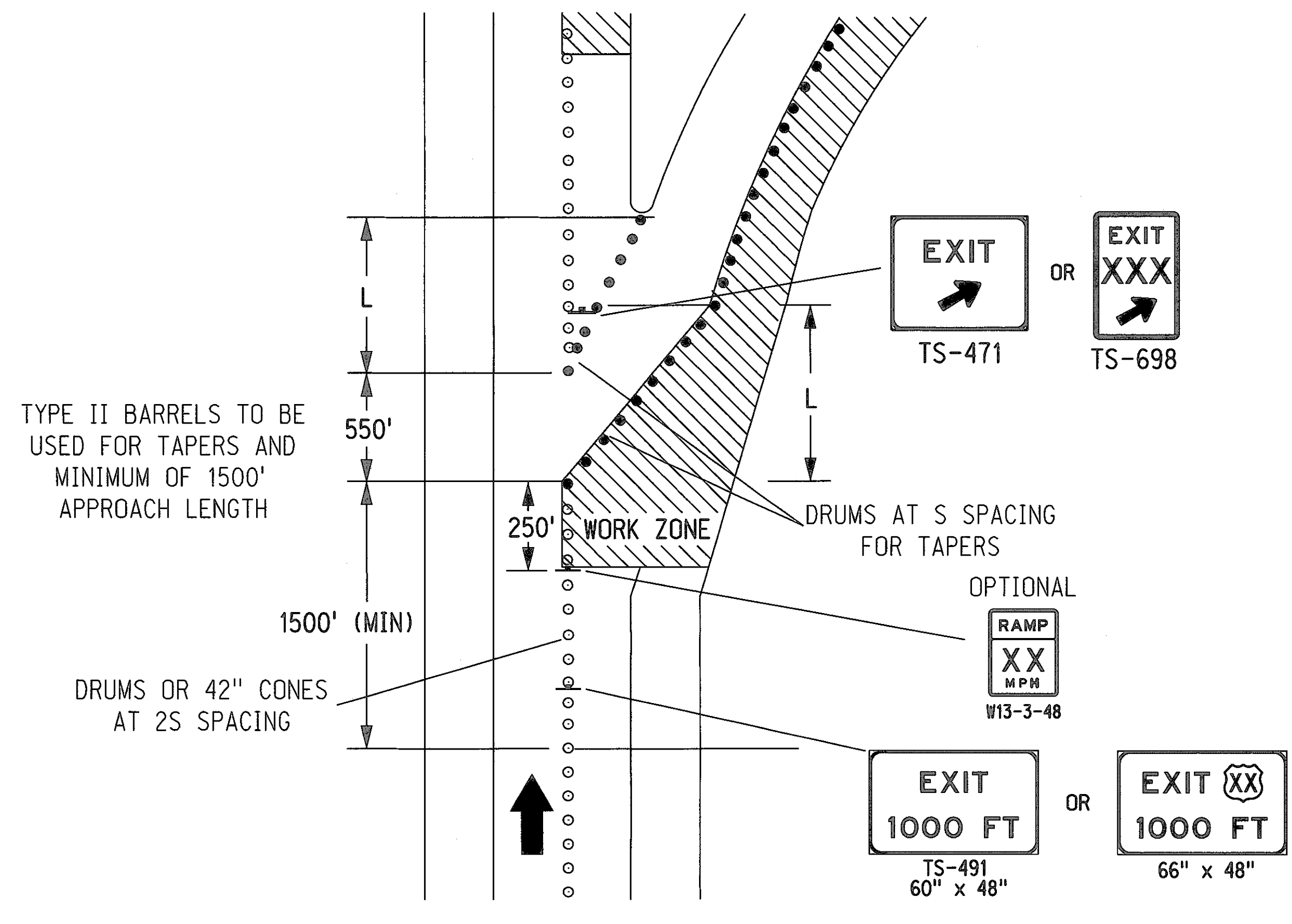
- LEGEND**
- FLASHING ARROW PANEL
  - TYPE III BARRICADE
  - REFLECTORIZED PLASTIC DRUM
  - REFLECTORIZED PLASTIC DRUM OR 42" REFLECTORIZED CONE
  - SINGLE POST SIGN
  - DOUBLE POST SIGN



NEBRASKA DEPARTMENT OF ROADS TRAFFIC ENGINEERING DIVISION			
TYPICAL TRAFFIC CONTROL PLAN			
DESIGNED	TJF	LANE CLOSURE PLAN	2/2
REVIEWED		FOR MULTILANE ROADWAYS	
APPROVED	DATE DRAWN	TRAFFIC ENGINEER	DATE
	05/13		

File: w2394-3 r5.dgn  
 Scale: 1:100  
 Date: 25-JUN-2014 16:05  
 User: dor23056  
 Computer: DRTRAFFIC20  
 TRAFFIC ENGINEERING DIVISION

## Work in Vicinity of Exit Ramp



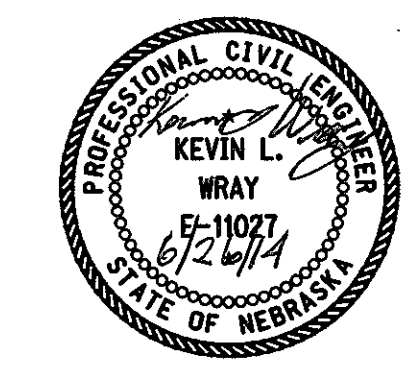
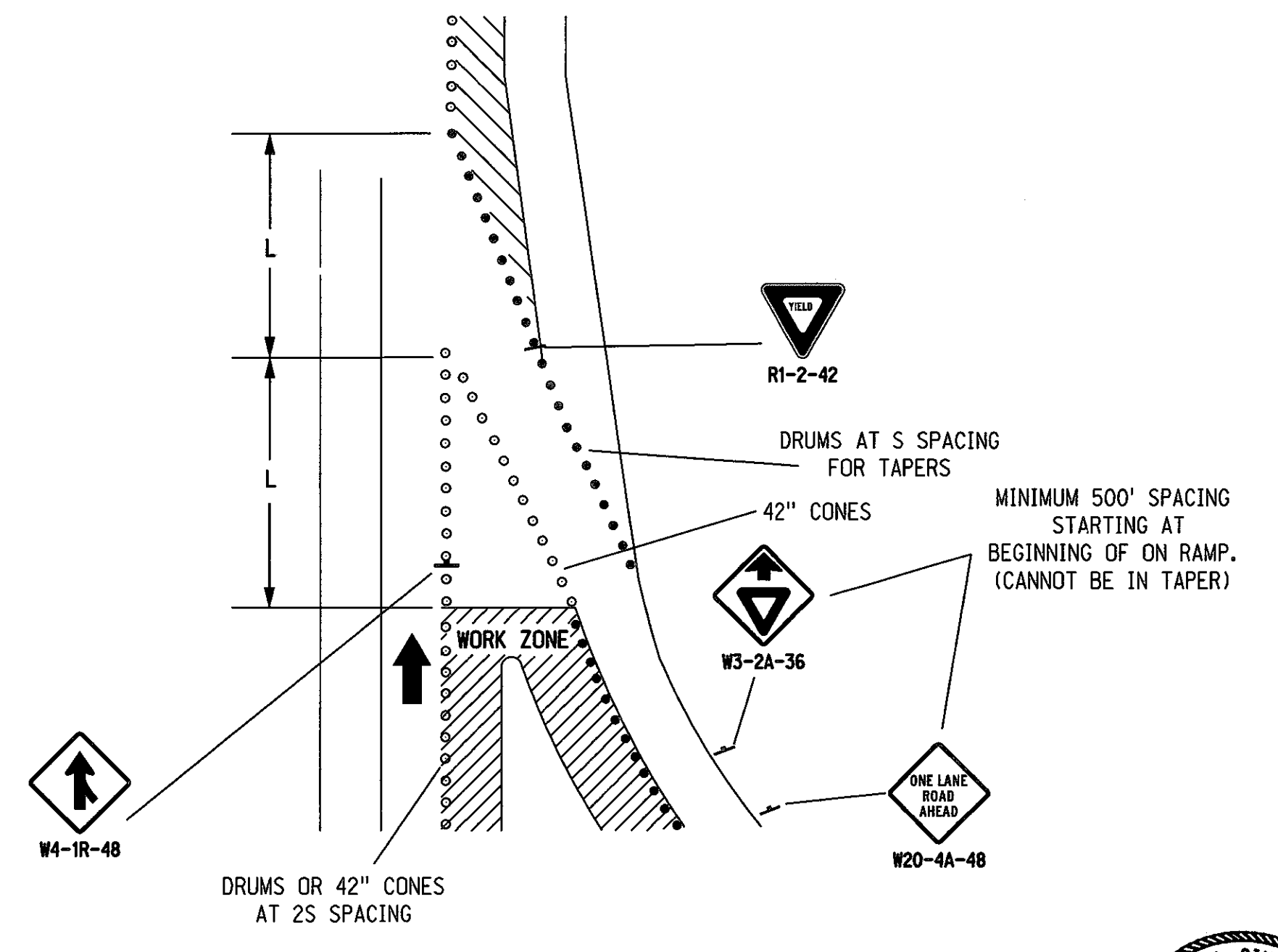
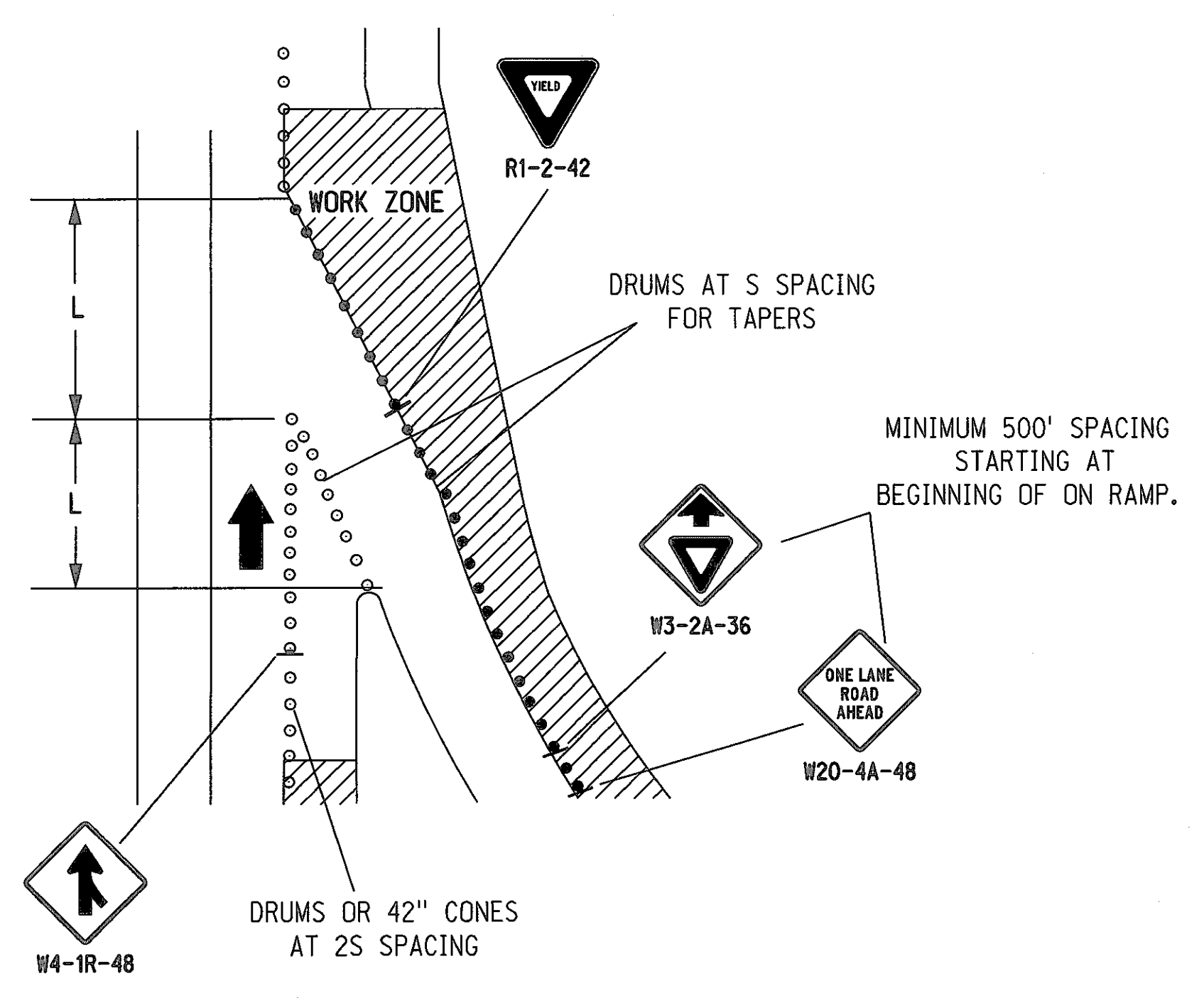
### NOTES

- L = WS
- L = TAPER LENGTH IN FEET
- W = WIDTH OF OFFSET IN FEET
- S = WORK ZONE SPEED (MPH)

### LEGEND

- TYPE III BARRICADE
- REFLECTORIZED PLASTIC DRUM
- ↑ SIGN
- ⬅ FLASHING ARROW PANEL
- REFLECTORIZED PLASTIC DRUM OR 42\"/>

## Work in Vicinity of On Ramp



NEBRASKA DEPARTMENT OF ROADS TRAFFIC ENGINEERING DIVISION			
TYPICAL TRAFFIC CONTROL PLAN			
DESIGNED	TJF	WORK IN VICINITY OF EXIT/ON RAMP	
REVIEWED		INTERSTATE/EXPRESSWAY	
APPROVED	DATE DRAWN 10/12	TRAFFIC ENGINEER	DATE

File: exit\_ramp\_construction\_r1.dgn Date: 25-JUN-2014 16:05 User: dor23056 Computer: DRTRAFFIC20 Scale: 1:100