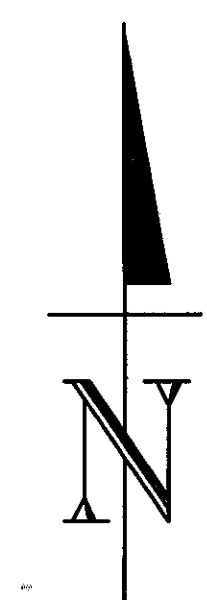


STATE OF NEBRASKA
DEPARTMENT OF ROADS

PLANS FOR CONSTRUCTION

HWY. 275 DODGE/CUMING LINE SOUTH
DODGE COUNTY

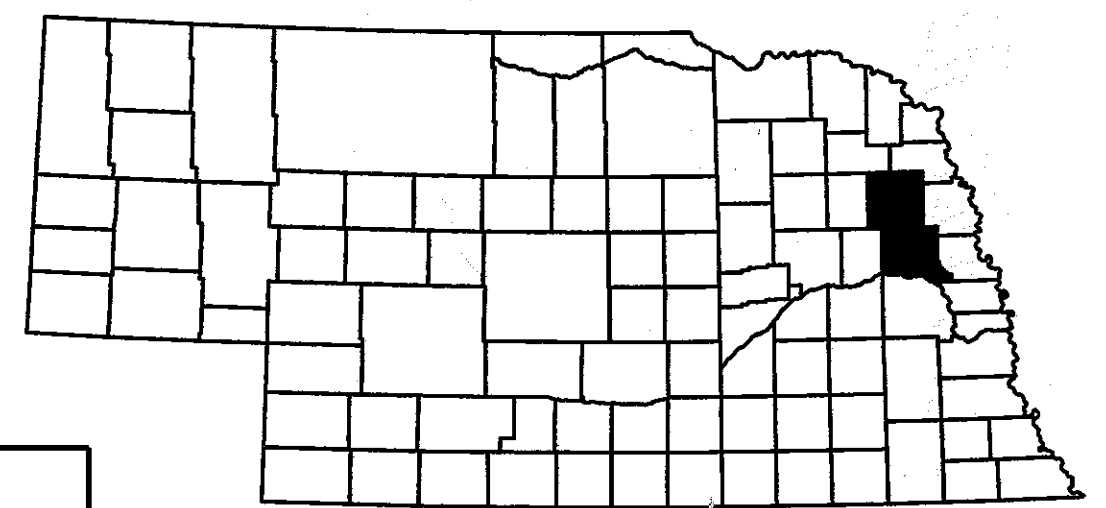
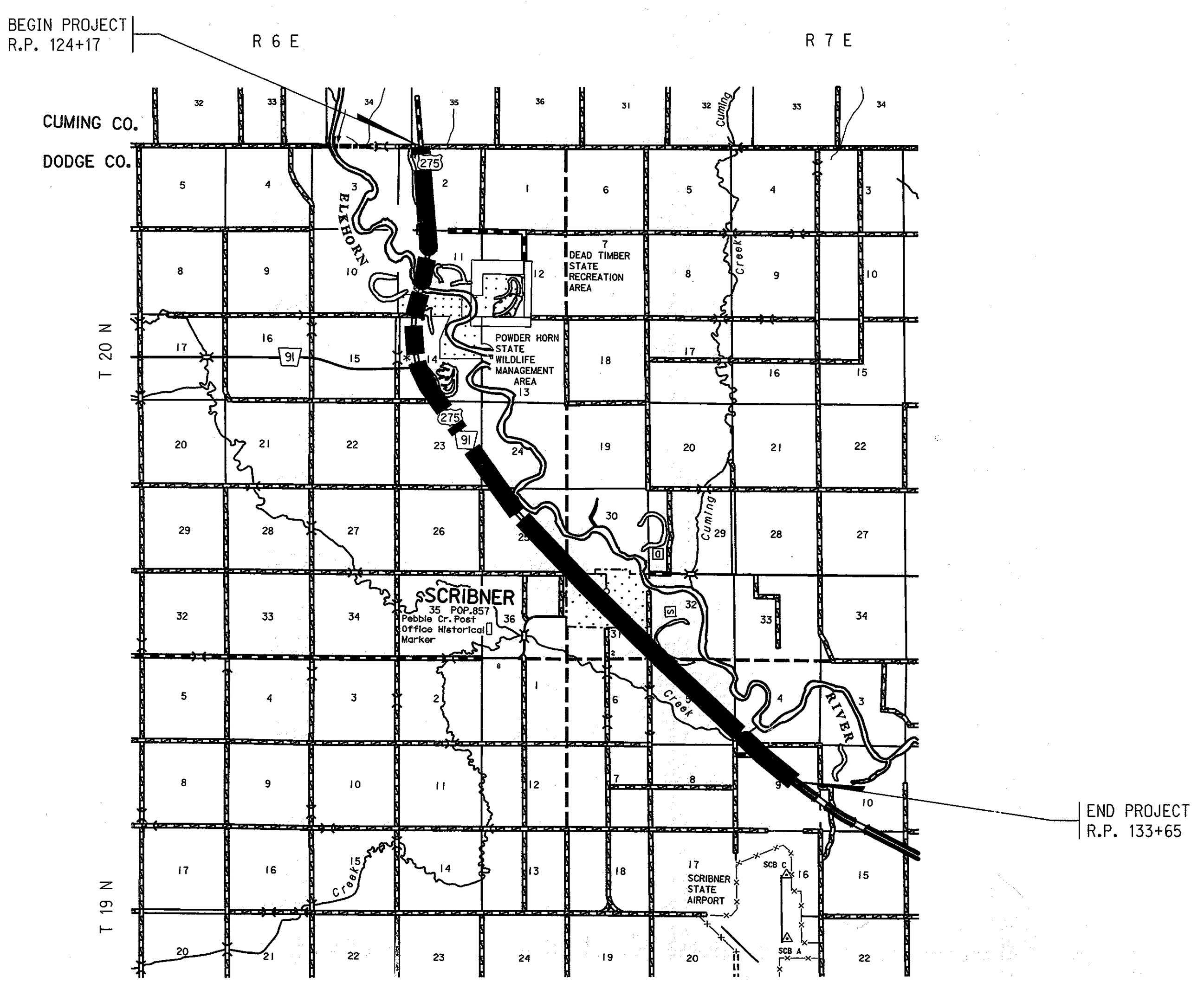
| | |
|------------------------|-----------|
| PROJECT NO. | SHEET NO. |
| AFE-B001 | 1 |
| ▲ CONTRACT I.D. M2TLOA | |
| ▲ CONTRACT I.D. | |
| ■ CONTRACT I.D. | |



THE 2007 EDITION OF THE NEBRASKA STANDARD SPECIFICATIONS AND THE SPECIAL PROVISIONS APPLY TO THIS PROJECT.

| | |
|---|--------------|
| THE WORK ON THIS PROJECT CONSISTS OF GROUPS | |
| 9-BITUMINOUS | |
| ▲ GROUPS 9 | ARE INCLUDED |
| IN THE LETTING OF APRIL 17, 2014 | |
| ▲ GROUPS | ARE INCLUDED |
| IN THE LETTING OF | |
| ■ GROUPS | ARE INCLUDED |
| IN THE LETTING OF | |

| |
|--------------------|
| DESIGN DESIGNATION |
| MAINTENANCE |
| TRAFFIC |
| YEAR: 2014 |
| ADT: 5820 |



INDEX OF SHEETS

| SHEET NO. | TITLE PAGE |
|-----------|---|
| 1 | TITLE PAGE |
| 2-S | SUMMARY OF QUANTITIES & TYPICAL CROSS SECTION |
| 3 | TEMPORARY PAVEMENT MARKING PLAN |
| 4 - 5 | SPECIAL PLAN 1C MILLED RUMBLE STRIPS |

STANDARD PLANS

| | |
|--------|--|
| 920-R5 | (2 SHEETS) TRAFFIC CONTROL, CONSTRUCTION AND MAINTENANCE |
| 922-R8 | (2 SHEETS) TRAFFIC CONTROL FOR ASPHALT SURFACING |

CONVENTIONAL SIGNS

| | |
|----------------------|--|
| FENCE R.O.W. OR WIRE | |
| GUARDRAIL | |
| TRAVELED WAY | |
| DIKE | |
| CULVERT | |
| POWER POLE | |
| TELEPHONE POLE | |
| MAILBOX | |
| RAILROAD TRACKS | |
| MARSH | |
| TREE - CONIFEROUS | |
| TREE - DECIDUOUS | |

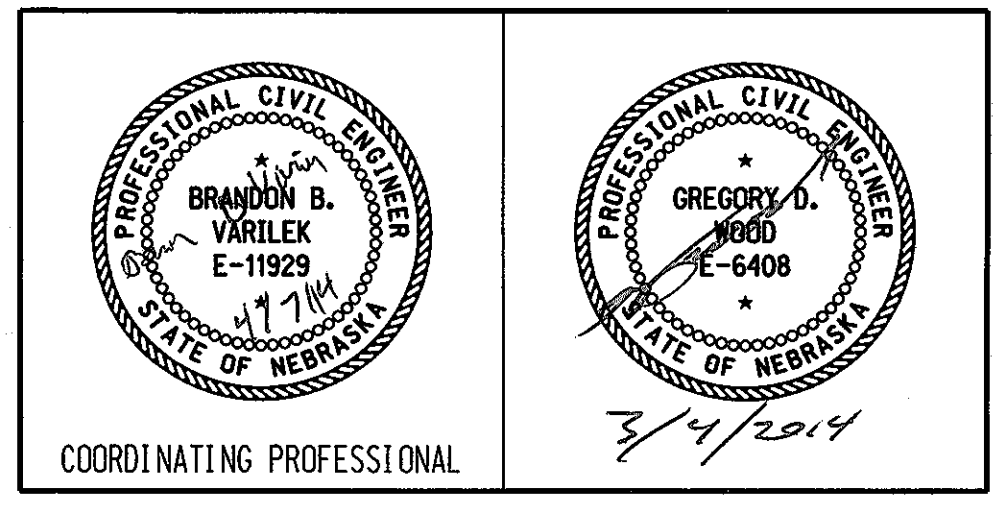
R.O.W. LEGEND

| | |
|---------------------------------|--|
| NEW CONTROLLED ACCESS | |
| PREVIOUS CONTROLLED ACCESS | |
| LIMITS OF CONSTRUCTION | |
| PREVIOUS R.O.W. | |
| NEW R.O.W. | |
| EXISTING PERMANENT EASEMENT | |
| TEMPORARY EASEMENT | |
| EXCESS TAKING | |
| PERMANENT EASEMENT | |
| EXISTING RAILROAD EASEMENT | |
| NEW RAILROAD PERMANENT EASEMENT | |
| NEW RAILROAD TEMPORARY EASEMENT | |

REFERENCE POST NO. 124+17 TO REFERENCE POST NO. 133+65

EXCEPTIONS: FROM STA. TO STA.

TOTAL NET LENGTH OF PROJECT: 50,054 FEET 9.48 MILES



CONSTRUCTION DIVISION

Computer: DRDESIGN188

User: dor13161

Date: 03-MAR-2014 08:41

File: m21hodopset11ie.dgn
Scale: 1:100

| | |
|-------------|-----------|
| PROJECT NO. | SHEET NO. |
| AFE-B001 | 2-S |

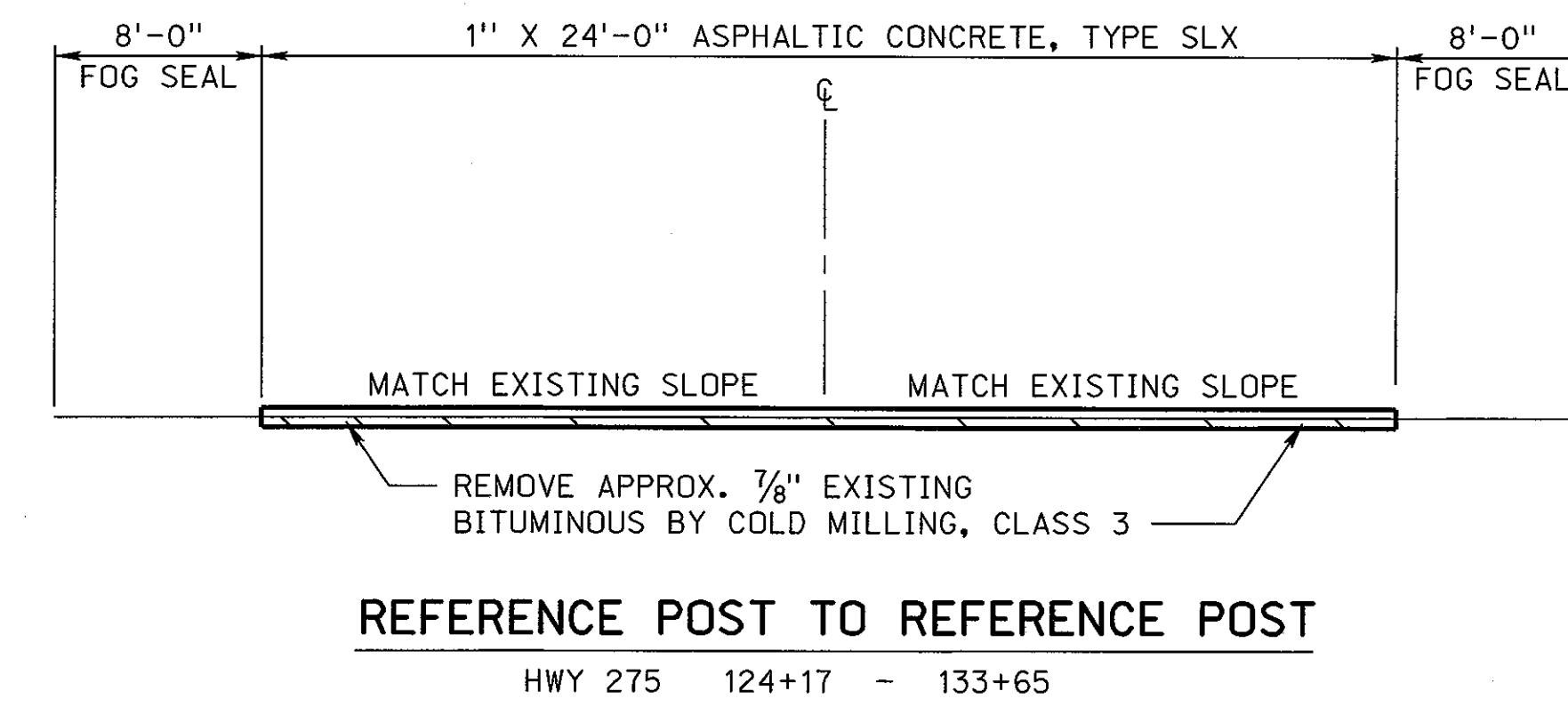
CONTRACT I.D. M2TLOA

SUMMARY OF QUANTITIES

TYPICAL CROSS SECTIONS

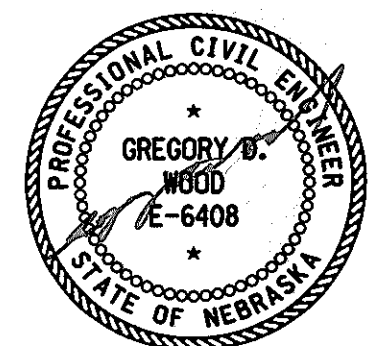
BITUMINOUS SURFACING ITEMS GROUP 9

| ITEM | QUANTITY | UNITS |
|---|------------|-------|
| BARRICADE, TYPE II | 3,225.000 | BDAY |
| BARRICADE, TYPE III | 108.000 | BDAY |
| TEMPORARY SIGN DAY | 210.000 | EACH |
| SIGN DAY | 2,106.000 | EACH |
| OVERLAY BROKEN LINES | 1,001.000 | STA |
| OVERLAY SOLID LINES | 2,002.000 | STA |
| FLAGGING | 30.000 | DAY |
| FURNISHING AND OPERATING PILOT VEHICLE | 10.000 | DAY |
| MOBILIZATION | 1.000 | LS |
| HYDRATED LIME/WARM MIX ASPHALT | 7,720.000 | EACH |
| ASPHALTIC CONCRETE, TYPE SLX | 7,320.000 | TON |
| ASPHALTIC CONCRETE FOR PATCHING, TYPE SLX | 400.000 | TON |
| PERFORMANCE GRADED BINDER (64-34) | 324.240 | TON |
| TACK COAT | 20,180.000 | GAL |
| FOG SEAL | 9,010.000 | GAL |
| RENTAL OF LOADER, FULLY OPERATED | 50.000 | HOUR |
| RENTAL OF MOTOR GRADER, FULLY OPERATED | 50.000 | HOUR |
| RENTAL OF DUMP TRUCK, FULLY OPERATED | 50.000 | HOUR |
| RENTAL OF SKID LOADER, FULLY OPERATED | 50.000 | HOUR |
| COLD MILLING, CLASS 3 | 504.544 | STA |
| RUMBLE STRIPS, ASPHALT 8" | 1,001.088 | STA |
| RAP INCENTIVE PAYMENT | 13,124.000 | EACH |
| ASPHALT PAVEMENT SMOOTHNESS TESTING | 1.000 | LS |



| BUILD RUMBLE STRIPS, SPECIAL PLAN 1C | | | | | | |
|--------------------------------------|-----------------|--------|----------|--------|----------|--------|
| REFERENCE POST TO REFERENCE POST | CENTERLINE | | SHOULDER | | EDGELINE | |
| | (STA.) | (STA.) | (STA.) | (STA.) | (STA.) | (STA.) |
| 124+17 - 133+65 | 504.544 | 2 | - | - | - | - |
| - | - | - | - | - | - | - |
| TOTAL | 1001.088 | | | | | |

| TYPES OF ASPHALTIC OIL TO BE USED |
|---|
| TACK COAT: SS-1, SS-1H, CSS-1, OR CSS-1H FOG SEAL: SS-1H OR CSS-1H |
| PERFORMANCE GRADED BINDER |
| AASHTO DESIGNATION M320 |



CONSTRUCTION DIVISION

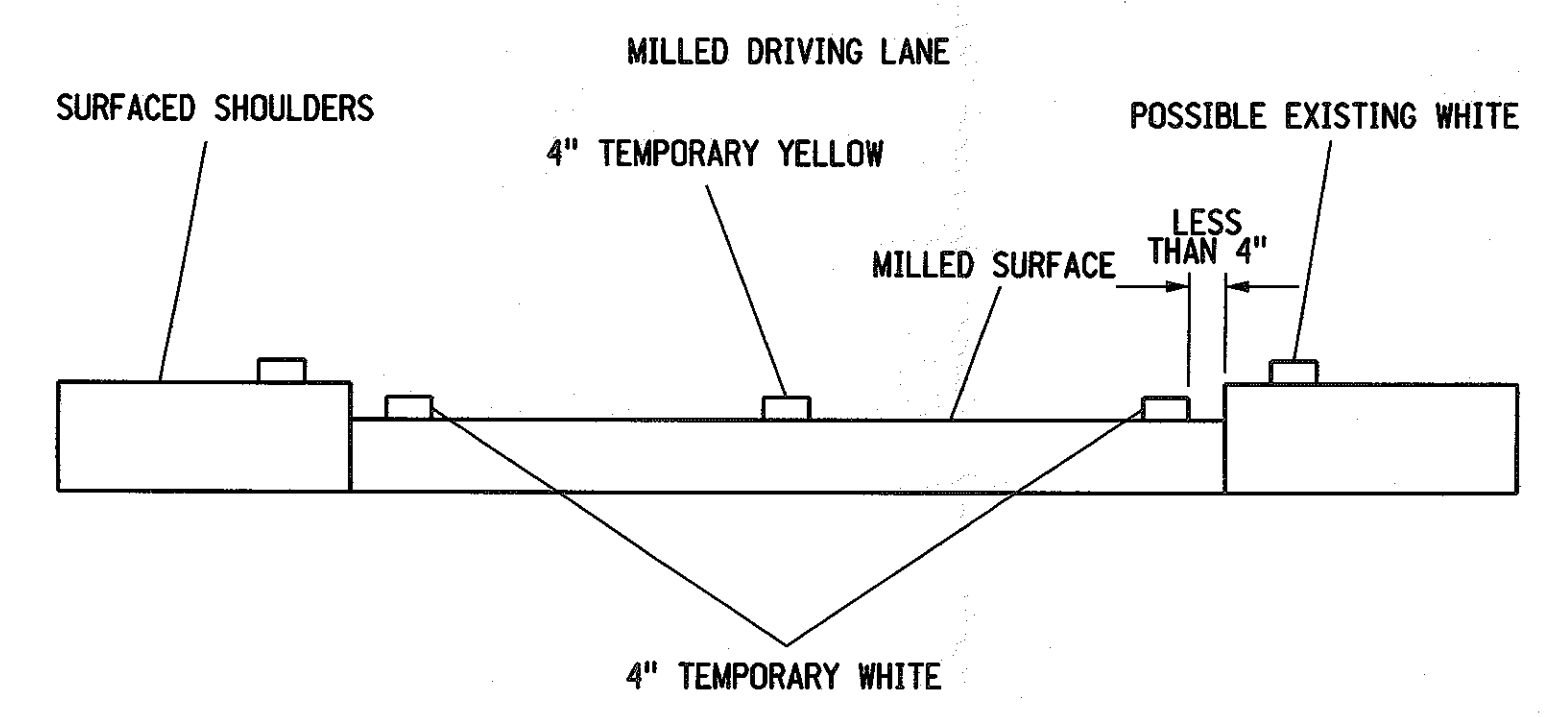
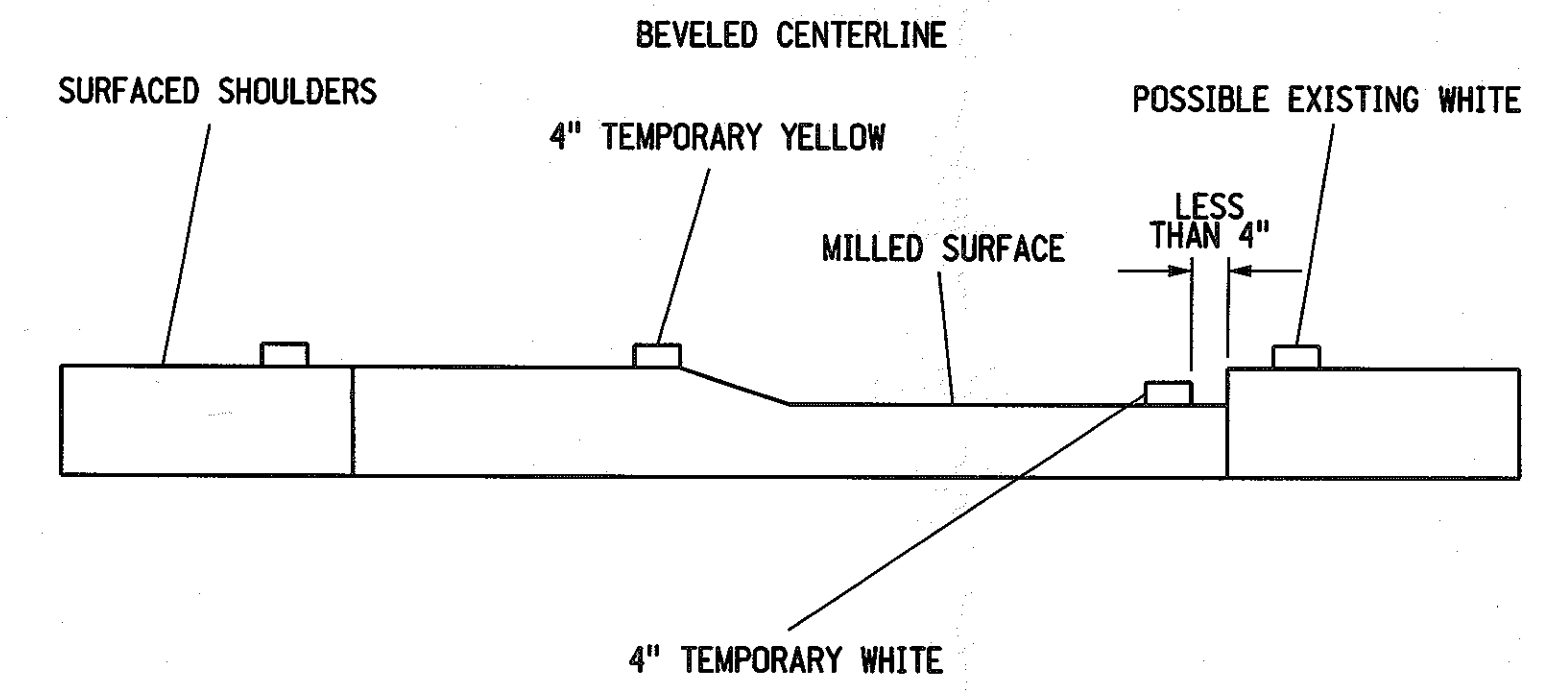
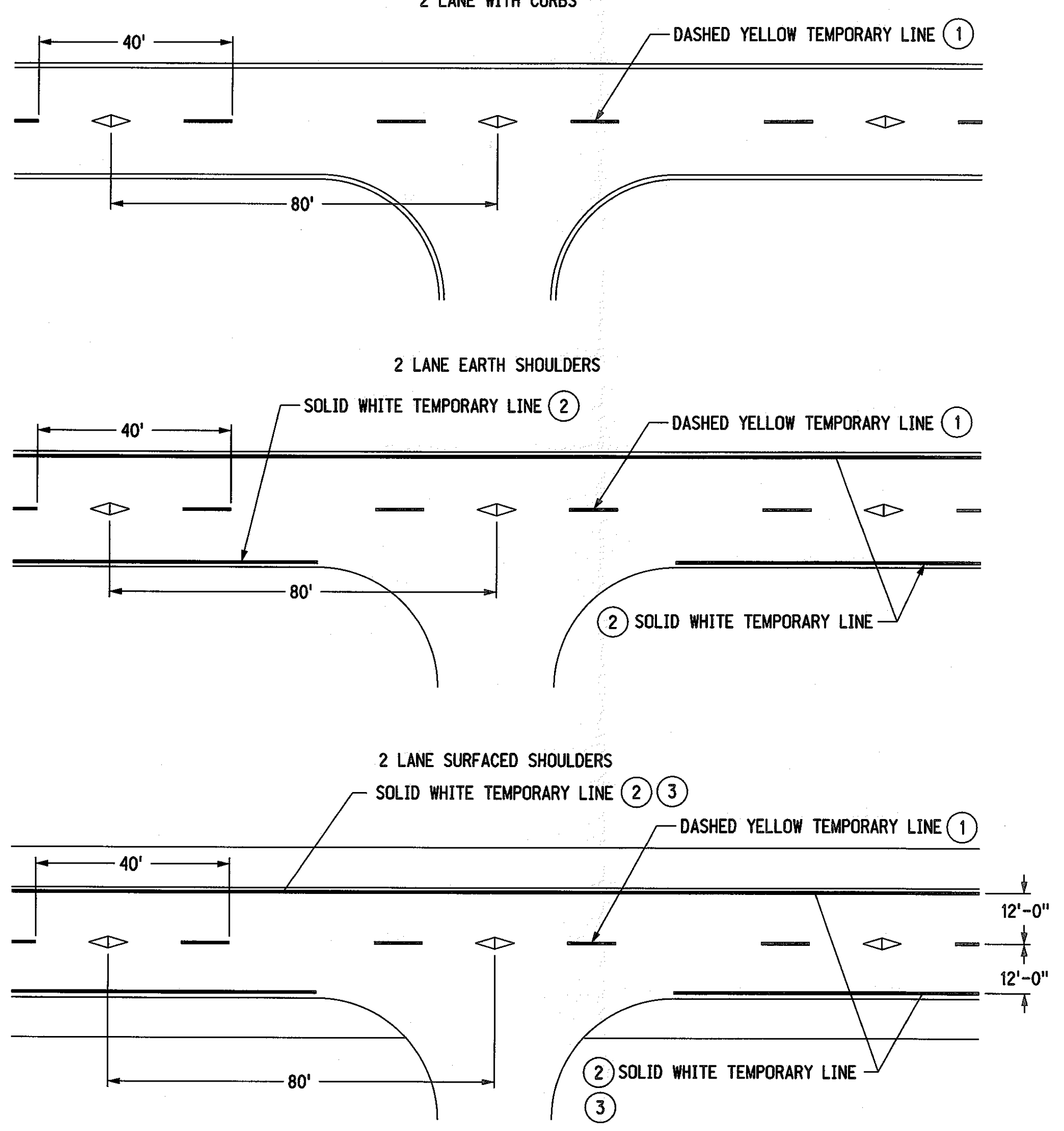
Computer: DRDESIGN188

User: dor13161

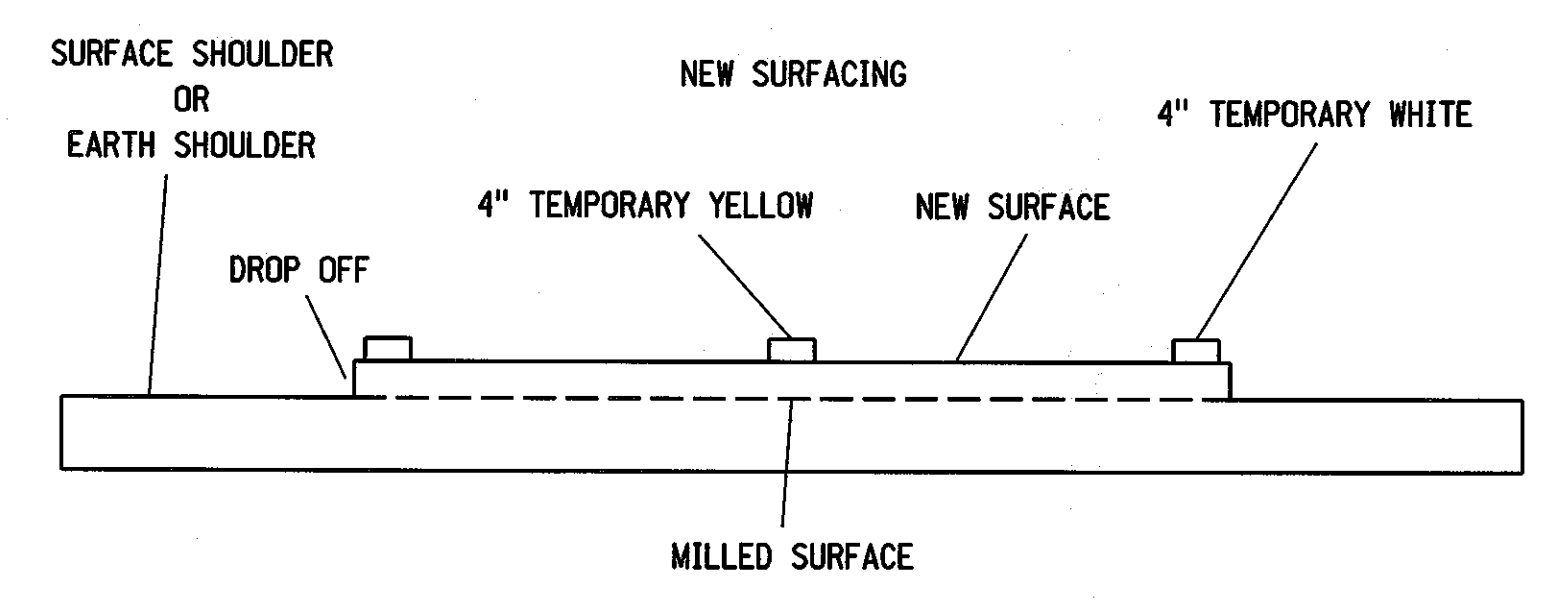
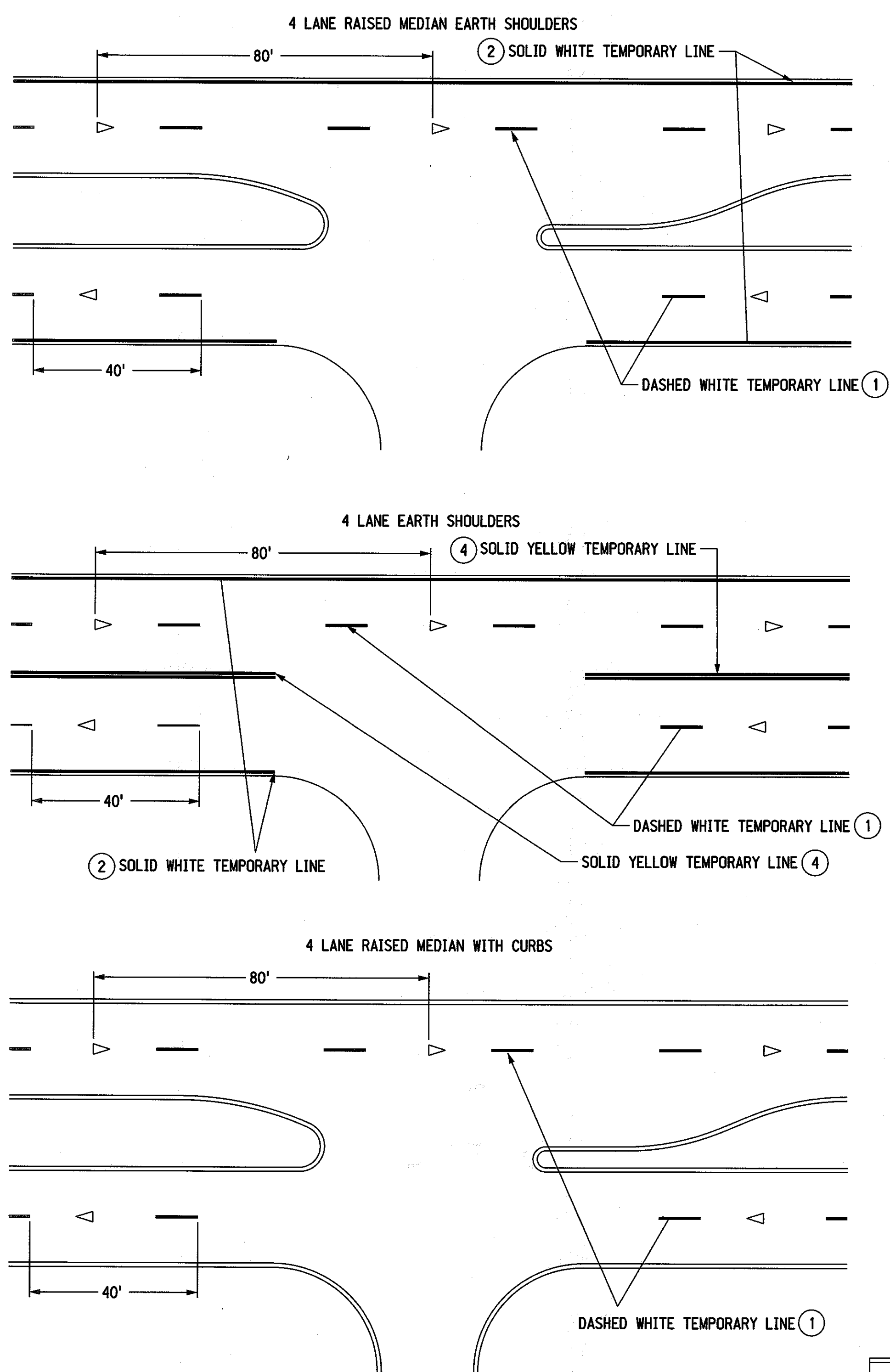
Date: 28-FEB-2014 09:47

File: m21000psr11e.dgn
Scale: 1:100

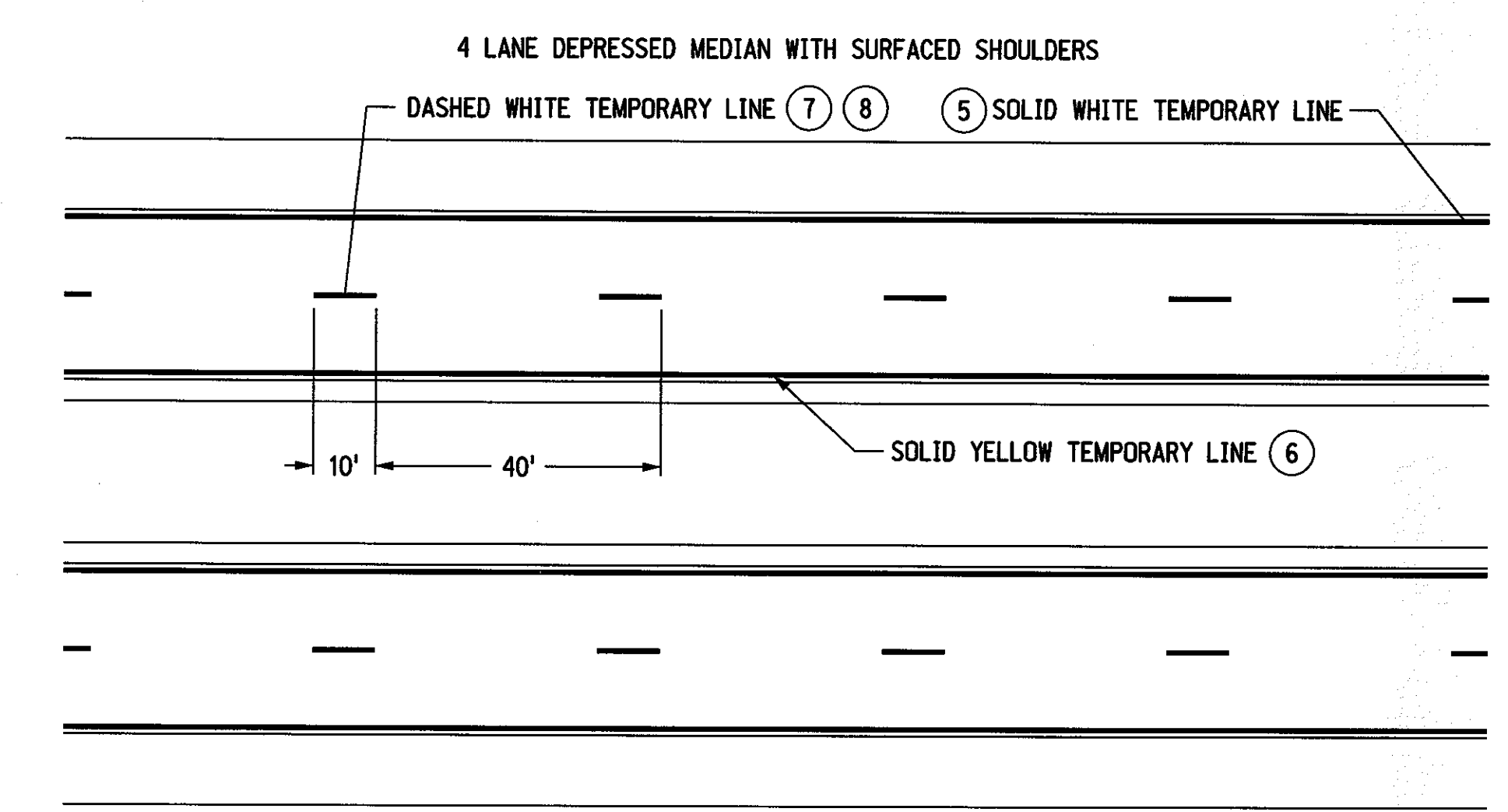
2 LANE ROADWAYS



4 LANE ROADWAYS



FREEWAY/RURAL EXPRESSWAY



NOTES

- ① LOWER LAYERS: TEMPORARY DASHED LINE SHALL BE 4" X 10' PAINTED LINE AT 40' INTERVALS OR 4" X 4' TYPE I TAPE LINE AT 40' INTERVALS. TAPE OR PAINT WILL BE SUPPLEMENTED WITH AN OVERLAY MARKER EVERY 80 FEET.
 - OVERLAY MARKERS ARE NOT REQUIRED ON MILLED SURFACES, HYDRATED LIME SURFACES AND STABILIZED SURFACES.
- TOP LAYER:
 - BROKEN LINE MARKINGS
 - INSTALL 4" X 4' TAPE AT 40' INTERVALS SUPPLEMENTED WITH AN OVERLAY MARKER EVERY 80 FEET.
 - OR USE NO TAPE, BUT INSTALL 2 RAISED PAVEMENT MARKERS SPACED 5' APART AT 40' INTERVALS.
 - SOLID LINE MARKINGS
 - 4" WIDE PAINTED LINE OR PAVEMENT MARKING TAPE. RAISED PAVEMENT MARKERS MAY BE USED IN LIEU OF PAINT OR TAPE, INSTALLED AT 10' INTERVALS.
- ARMOR COATS FOG SEALS: 2 OVERLAY MARKERS 5' APART, PER 40 FOOT CYCLE (NO PAINT OR TAPE).
- ② TEMPORARY SOLID LINE SHALL BE 4" WIDE PAINTED LINE.
- ③ EDGE LINE SHALL BE PLACED SO THAT THE OUTSIDE EDGE OF PAINT IS THE REQUIRED DISTANCE FROM CENTERLINE ON THE TOP LIFT
- ④ TEMPORARY CENTERLINE SHALL BE TWO 4" PAINTED LINES SPACED 4" APART, CENTERED ABOUT THE JOINT LINE.
- ⑤ EDGELINE SHALL BE 4" PAINTED LINE. PLACED TO THE LEFT OF JOINT LINE.
- ⑥ ALL LAYERS: EDGELINE SHALL BE PLACED 12'-0" FROM THE CENTER JOINT LINE. (RIGHT OF SHOULDER JOINT LINE WHEN APPLICABLE)
- ⑦ MILLED SURFACE OR LOWER LIFTS: THE TEMPORARY WHITE DASH LINE SHALL BE 4" X 10' MINIMUM PAINTED LINE AT 40' INTERVALS, PLACED TO THE LEFT OF THE JOINT LINE.
- ⑧ TOP LIFT: THE TEMPORARY WHITE DASH LINE SHALL BE 4" IN WIDTH X MINIMUM 8' TO MAXIMUM 10' LENGTH, PLACED 2" TO THE LEFT OF THE JOINT LINE. THE INTERVAL (CYCLE) SHALL BE 40' ± 2" TO ALLOW FOR THE PERMANENT PAVEMENT MARKING.
- ⑨ ALL TEMPORARY PAVEMENT MARKING THAT WILL BE COVERED BY PERMANENT PAVEMENT MARKING SHALL COMPLY WITH THE ALIGNMENT AND LOCATION REQUIREMENTS OF THE FINAL PAVEMENT MARKING MATERIAL. TEMPORARY PAVEMENT MARKINGS THAT ARE NOT COVERED BY THE PERMANENT MARKINGS SHALL BE REMOVED AT THE CONTRACTOR'S EXPENSE.

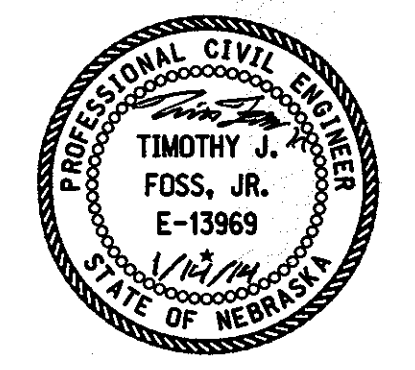
| ROADWAY WIDTH | SHOULDER TYPE | DISTANCE FROM ϵ OF ROADWAY TO OUTSIDE EDGE OF PAVEMENT |
|---------------|---------------|---|
| LESS THAN 24' | SURFACED | EDGE OF LANE |
| LESS THAN 24' | EARTH | PAVEMENT EDGE |
| 24' | EARTH | PAVEMENT EDGE |
| 24' | SURFACED | 12'-0" * |
| 24' TO 28' | EARTH | 12'-0" * |

* SEE NOTE 3

CENTERLINE MARKING SHALL BE PLACED ON THE "SOUTH" SIDE OF THE CENTER JOINT ON EAST-WEST ROADS AND ON THE "EAST" SIDE OF THE CENTER JOINT ON NORTH-SOUTH ROADS

LEGEND

- ◁ OVERLAY MARKER
- ◁ BIDIRECTIONAL OVERLAY MARKER

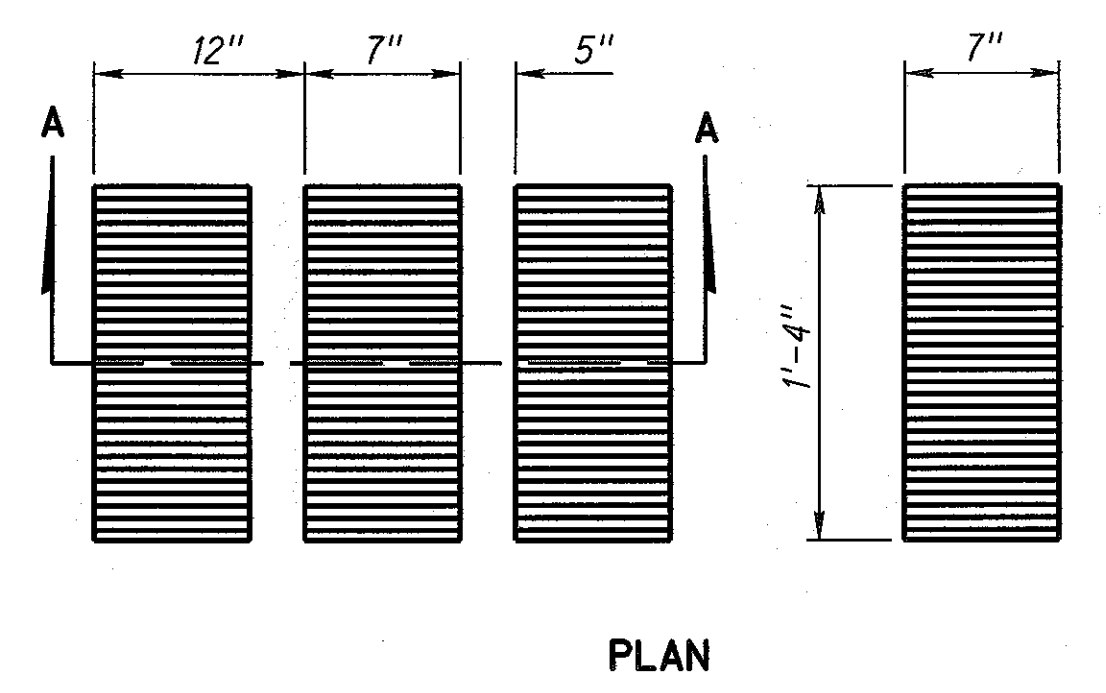


NEBRASKA DEPARTMENT OF ROADS TRAFFIC ENGINEERING DIVISION

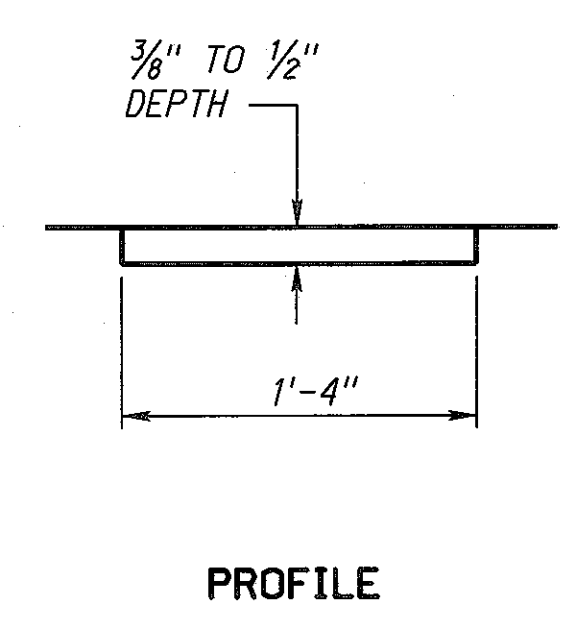
TYPICAL PAVEMENT MARKING

| | | | |
|------------|------|---------------------------------|------|
| DESIGNED | DV | TEMPORARY PAVEMENT MARKING PLAN | 1/1 |
| REVIEWED | MAN | | |
| DATE DRAWN | 8/06 | TRAFFIC ENGINEER | DATE |

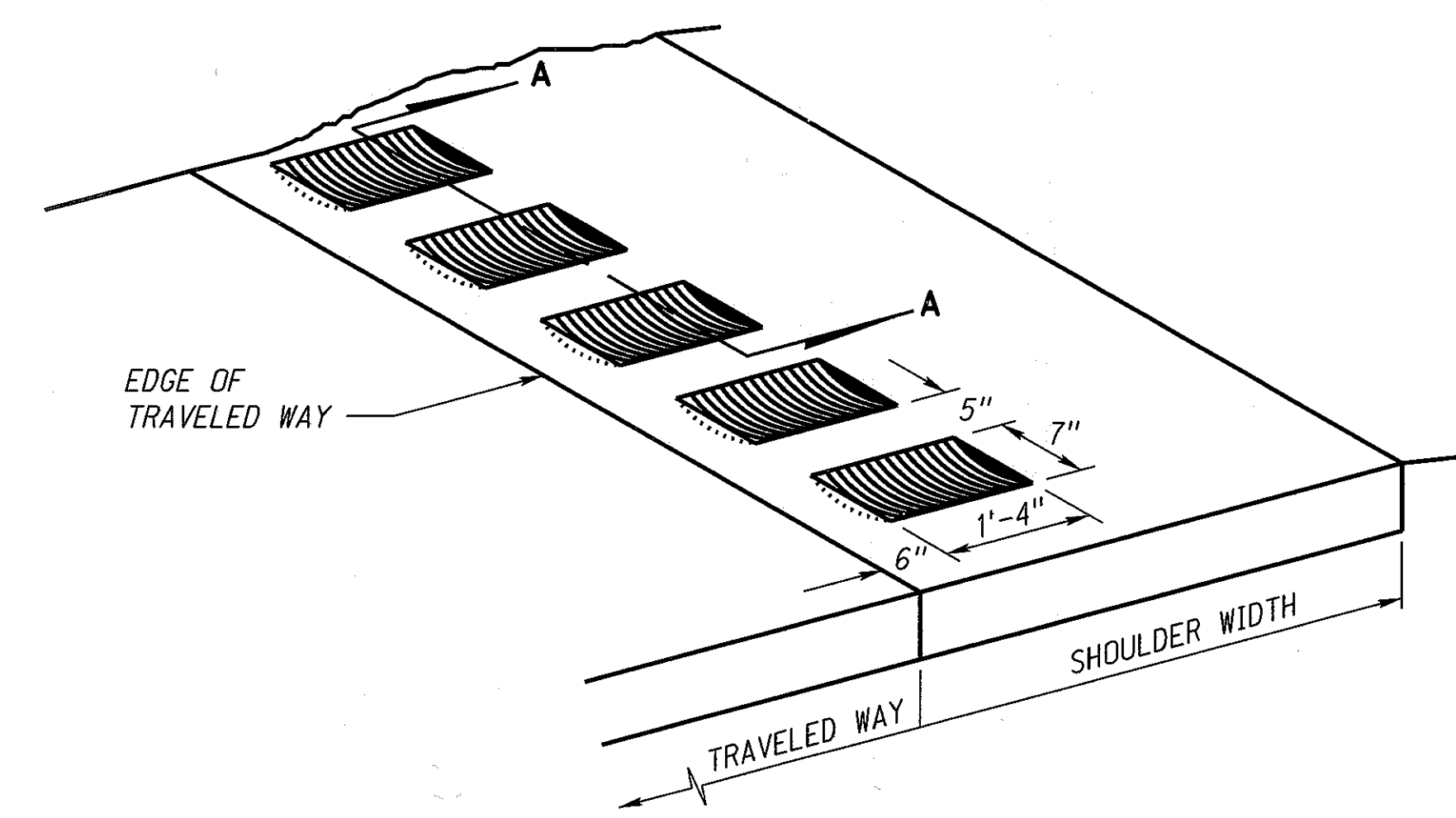
ROADWAY DESIGN DIVISION



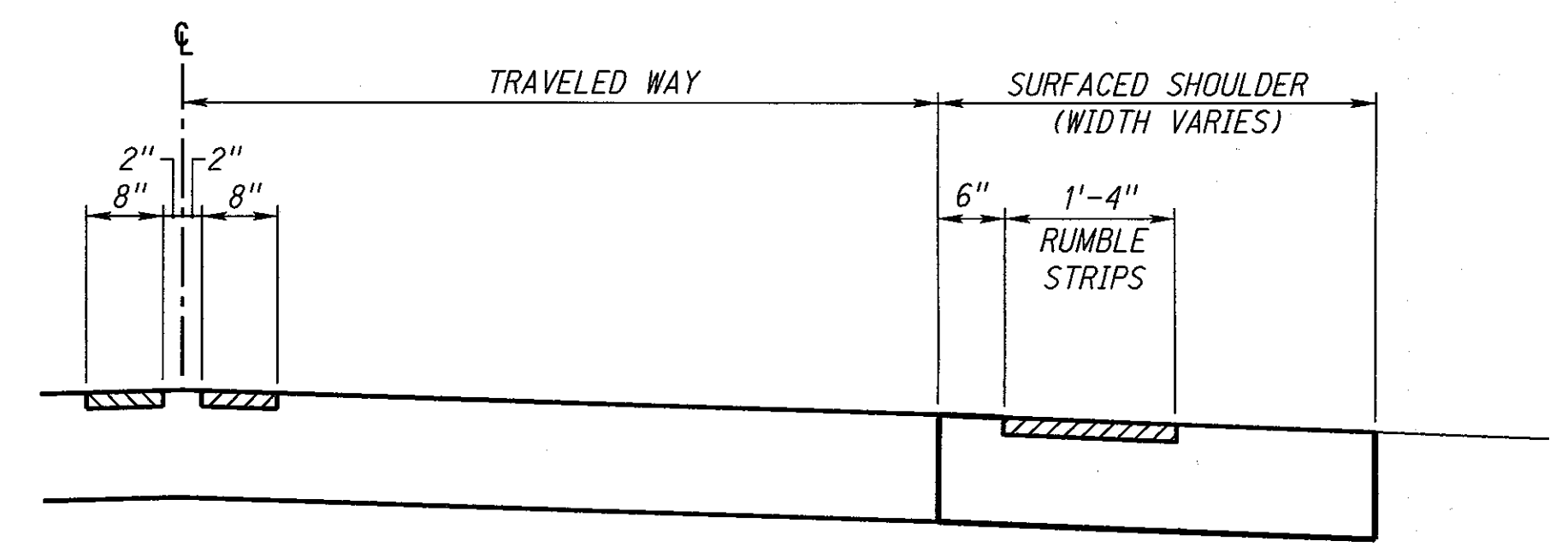
PLAN



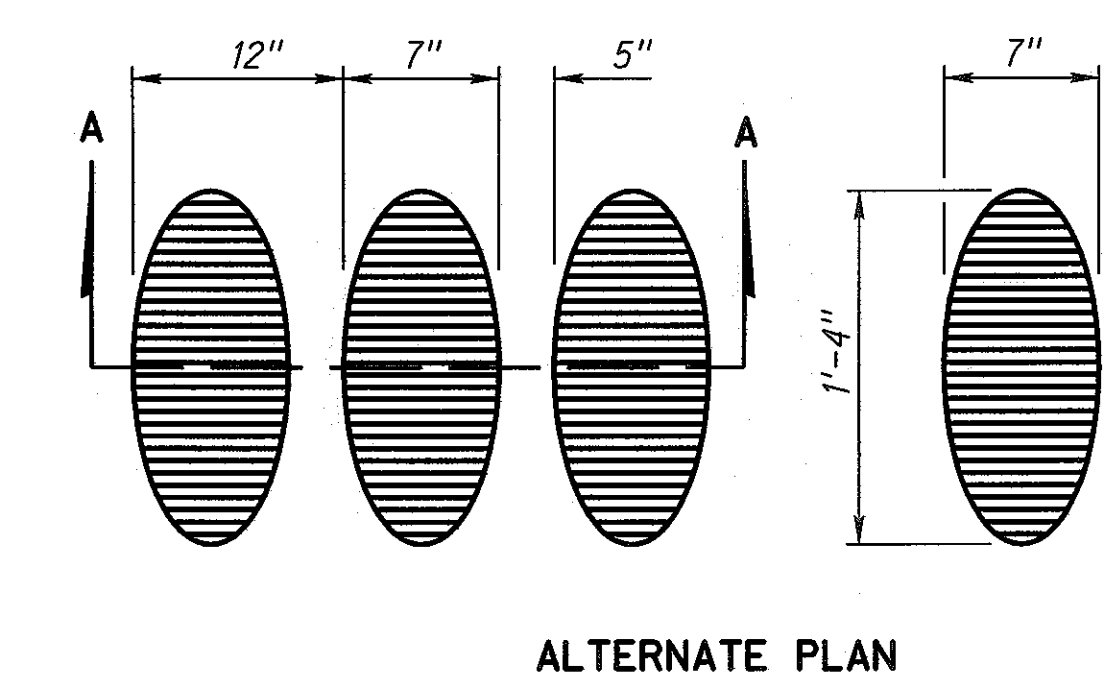
PROFILE



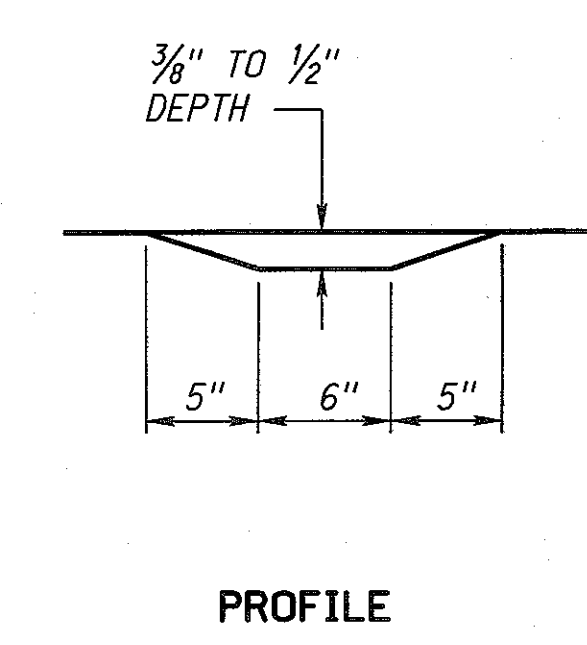
SHOULDER RUMBLE STRIPS DETAIL



SHOULDER & CENTERLINE

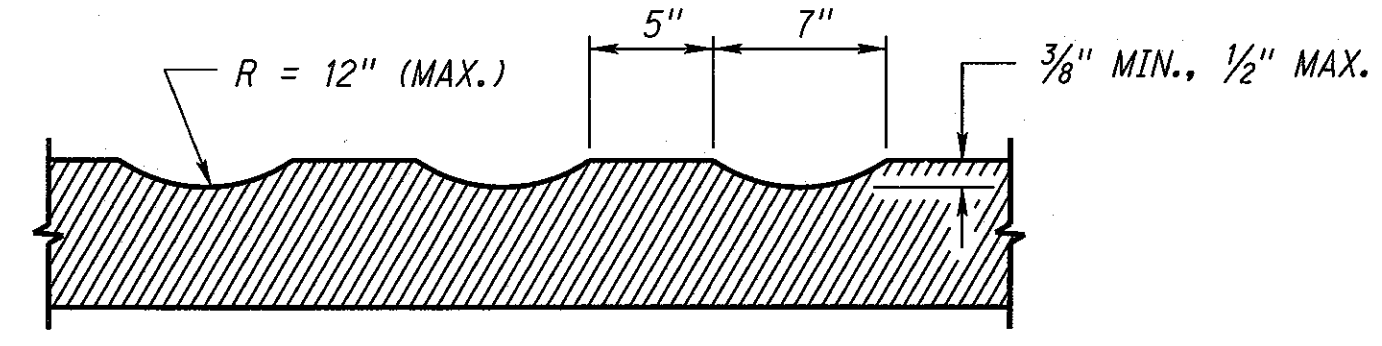


ALTERNATE PLAN

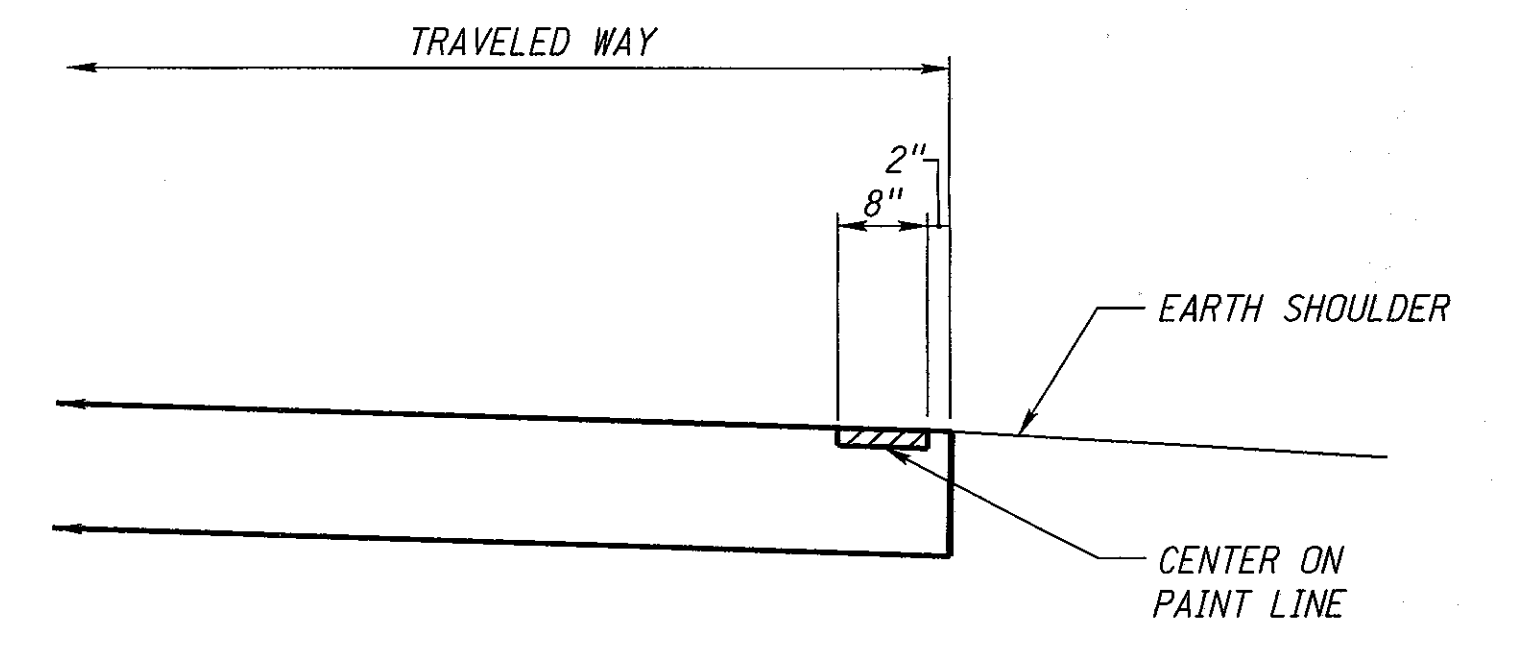


PROFILE

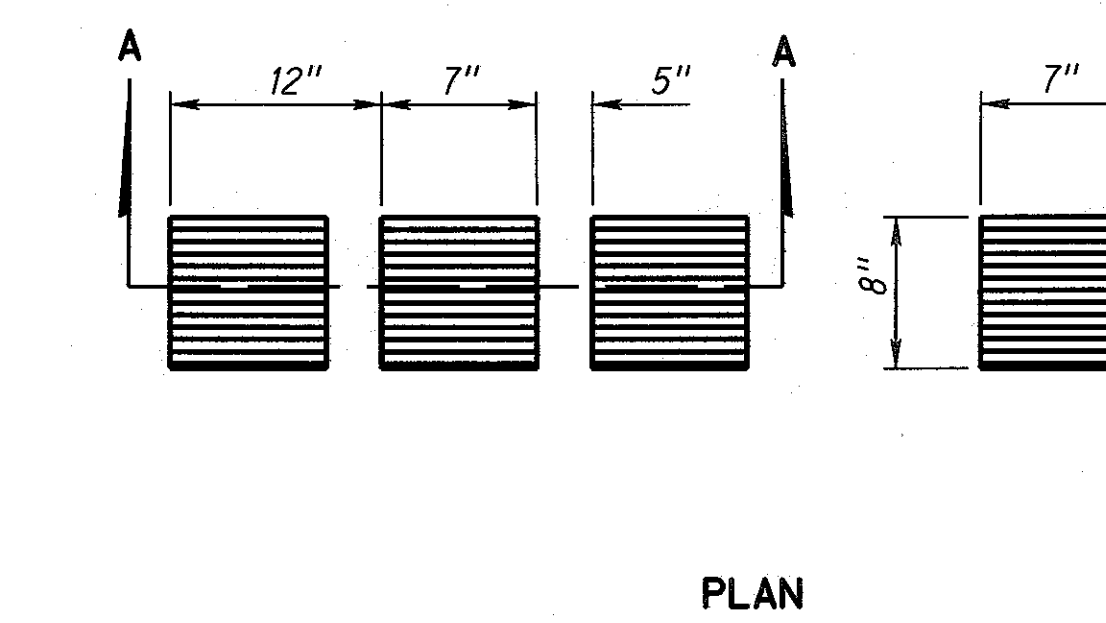
SHOULDER RUMBLE STRIPS SHAPE



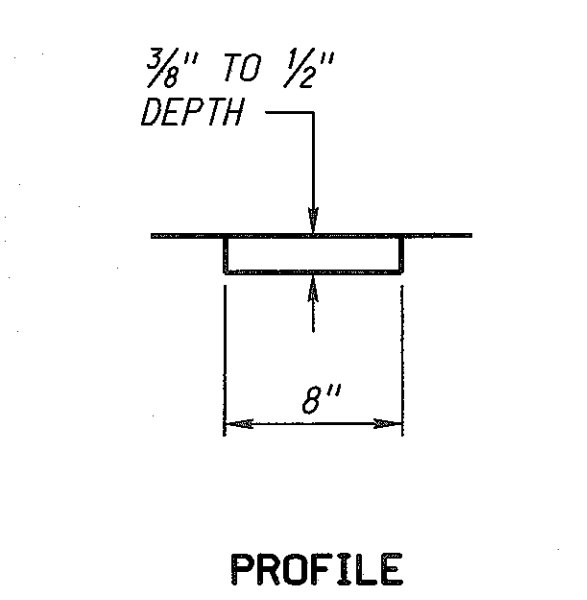
RUMBLE STRIPS CORRUGATIONS
SECTION A-A
(TYPICAL FOR ALL SHAPES)



EDGELINE ON 24 FEET ROADWAY

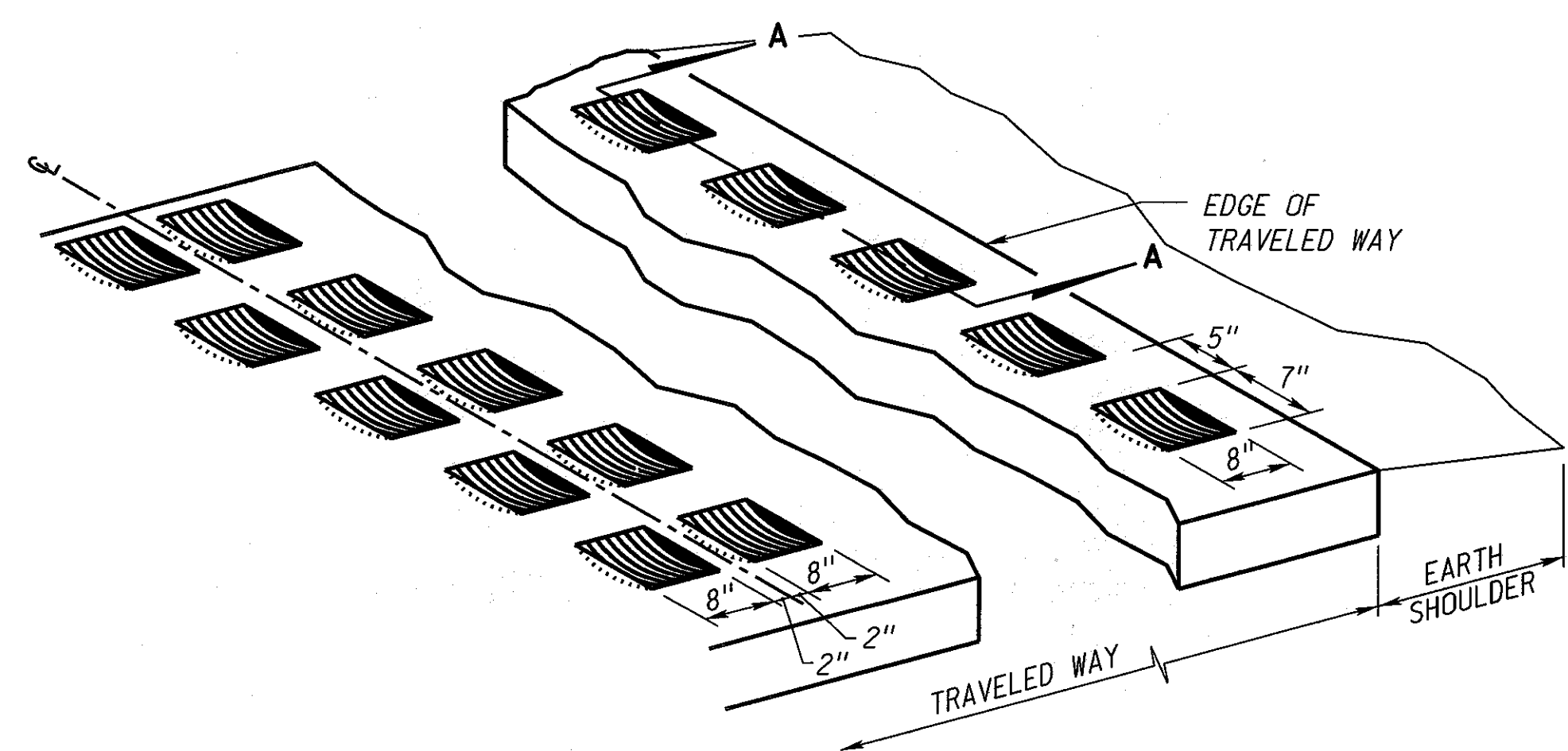


PLAN

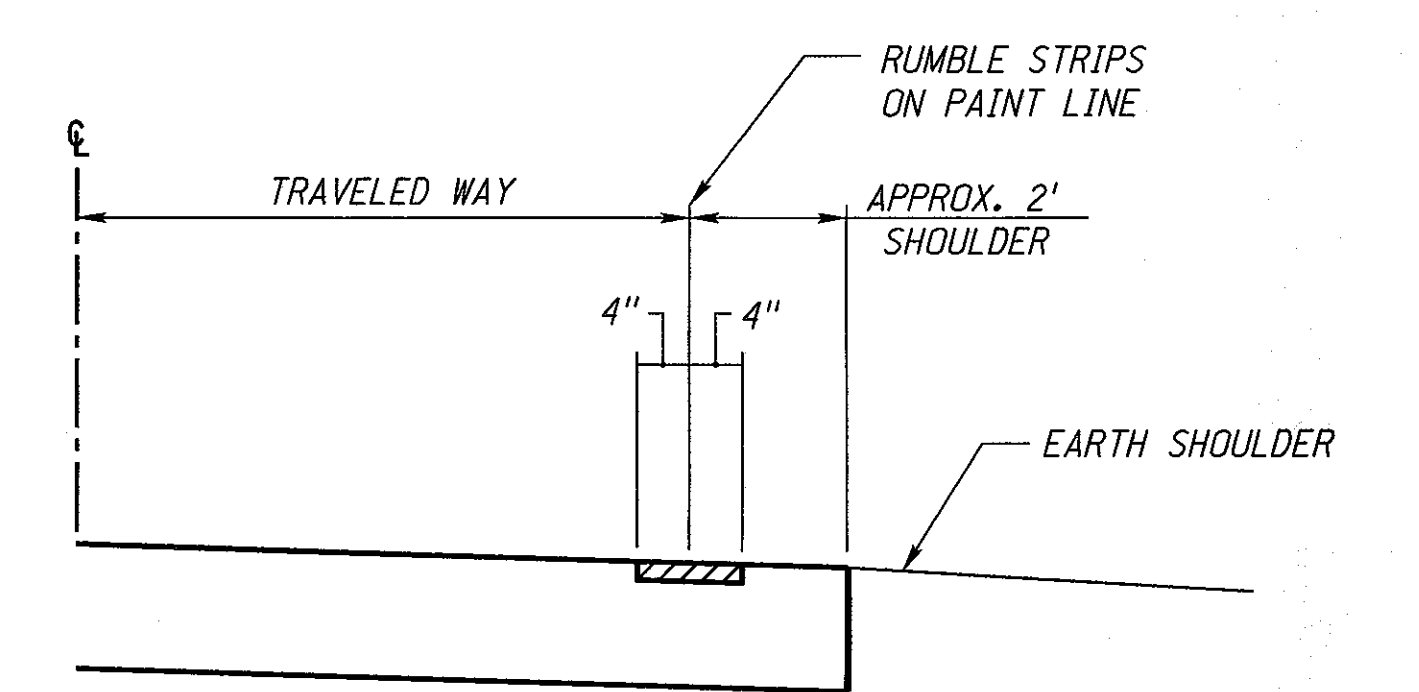


PROFILE

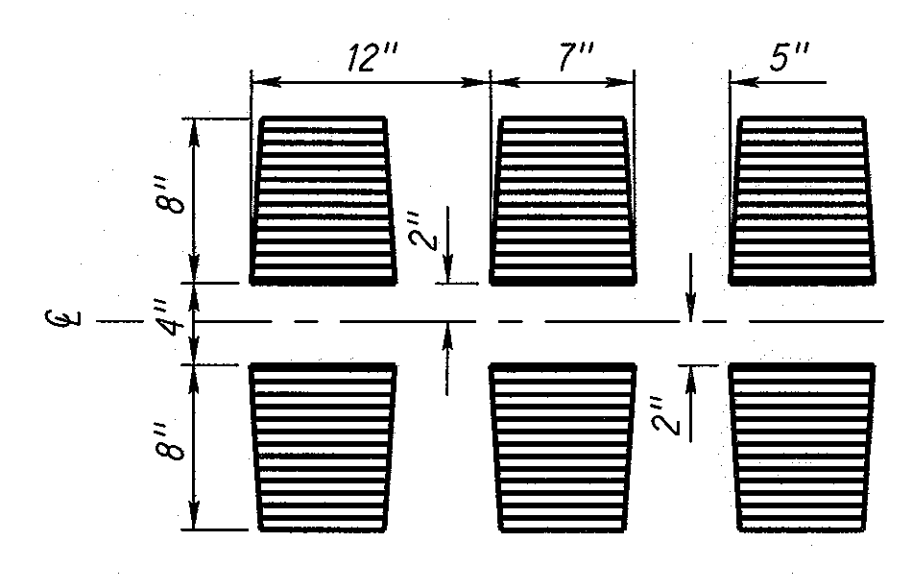
CENTERLINE AND EDGELINE RUMBLE STRIPS SHAPE



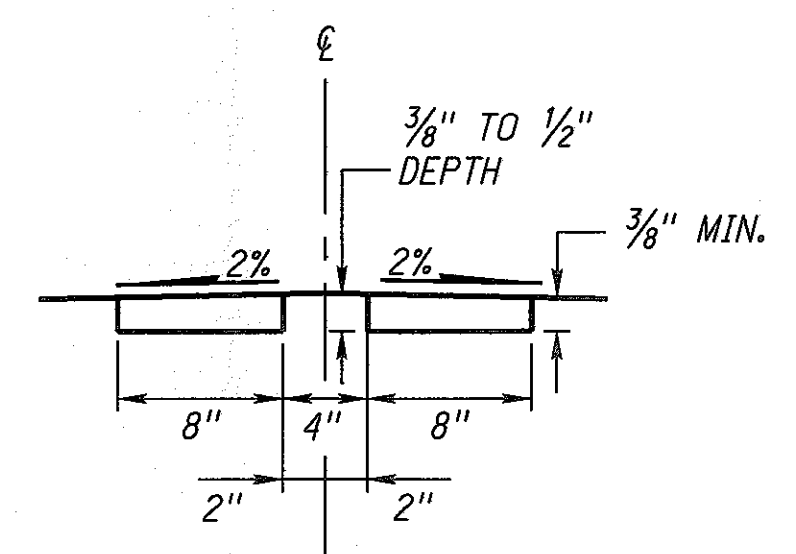
CENTERLINE AND EDGELINE RUMBLE STRIPS DETAIL



EDGELINE ON 28 FEET ROADWAY



PLAN



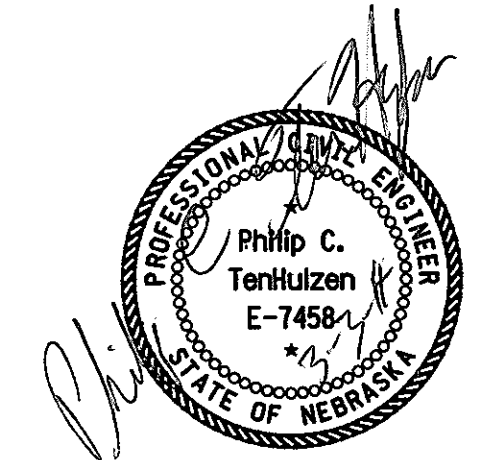
PROFILE

ALTERNATE CENTERLINE RUMBLE STRIPS SHAPE

NOTES:

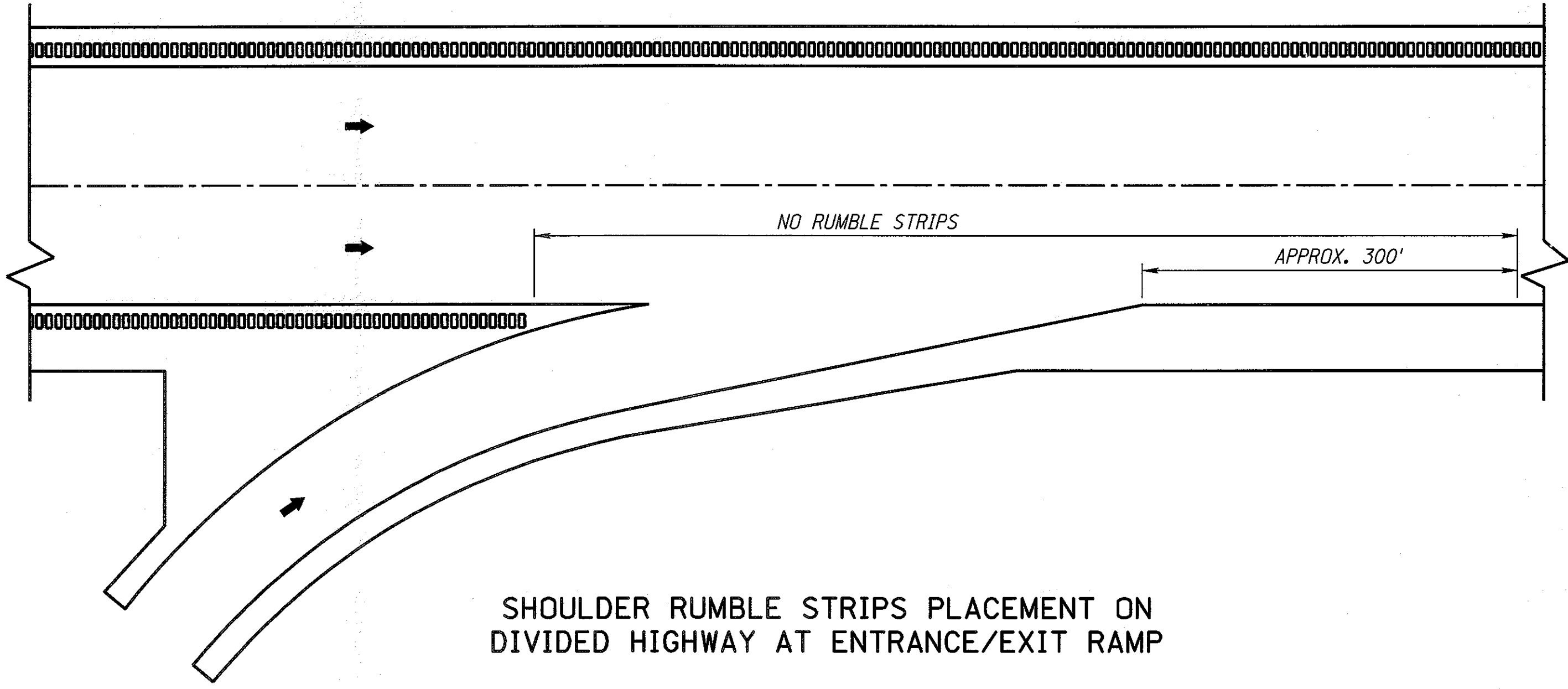
RUMBLE STRIPS SHALL BE PLACED ON ALL SHOULDERS AS INDICATED IN THIS PLAN AND IN ACCORDANCE WITH THE PROJECT PLANS. RUMBLE STRIPS ARE NOT NORMALLY REQUIRED ON CITY STREETS AND OTHER URBAN SHOULDERS ADJACENT TO CURB AND GUTTER UNLESS SPECIFICALLY NOTED IN THE PLANS.

RUMBLE STRIPS MAY BE CONTINUOUS THROUGH ALL DRIVEWAYS AND SHALL BE OMITTED ACROSS INTERSECTING ROADWAYS AND BRIDGES.

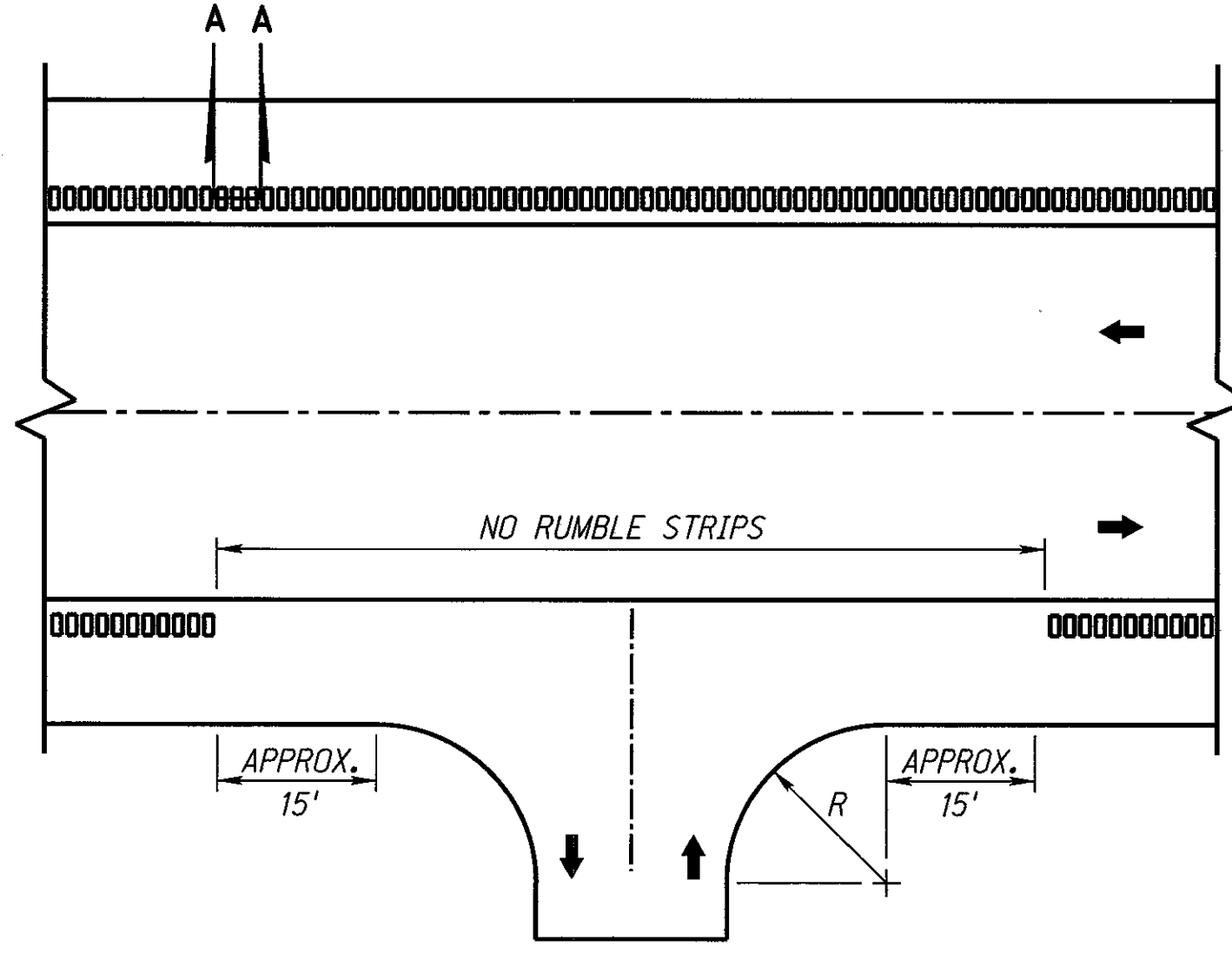


Computer: DRDESIGN188
User: dor13161
Date: 28-FEB-2014 10:50
File: m2hcd0d01.dgn
Scale: 1:00
SHEET 1 OF 4

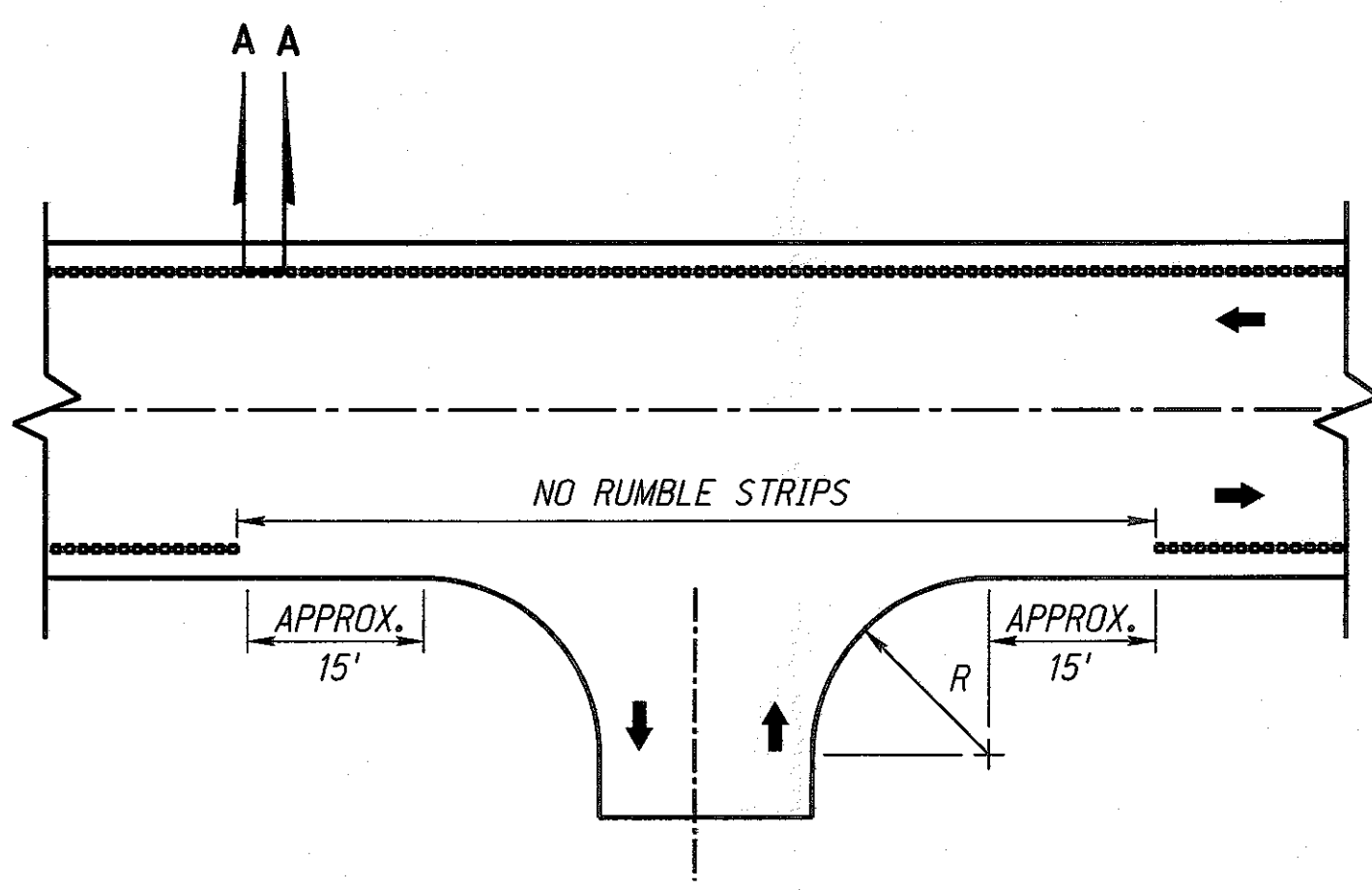
ROADWAY DESIGN DIVISION



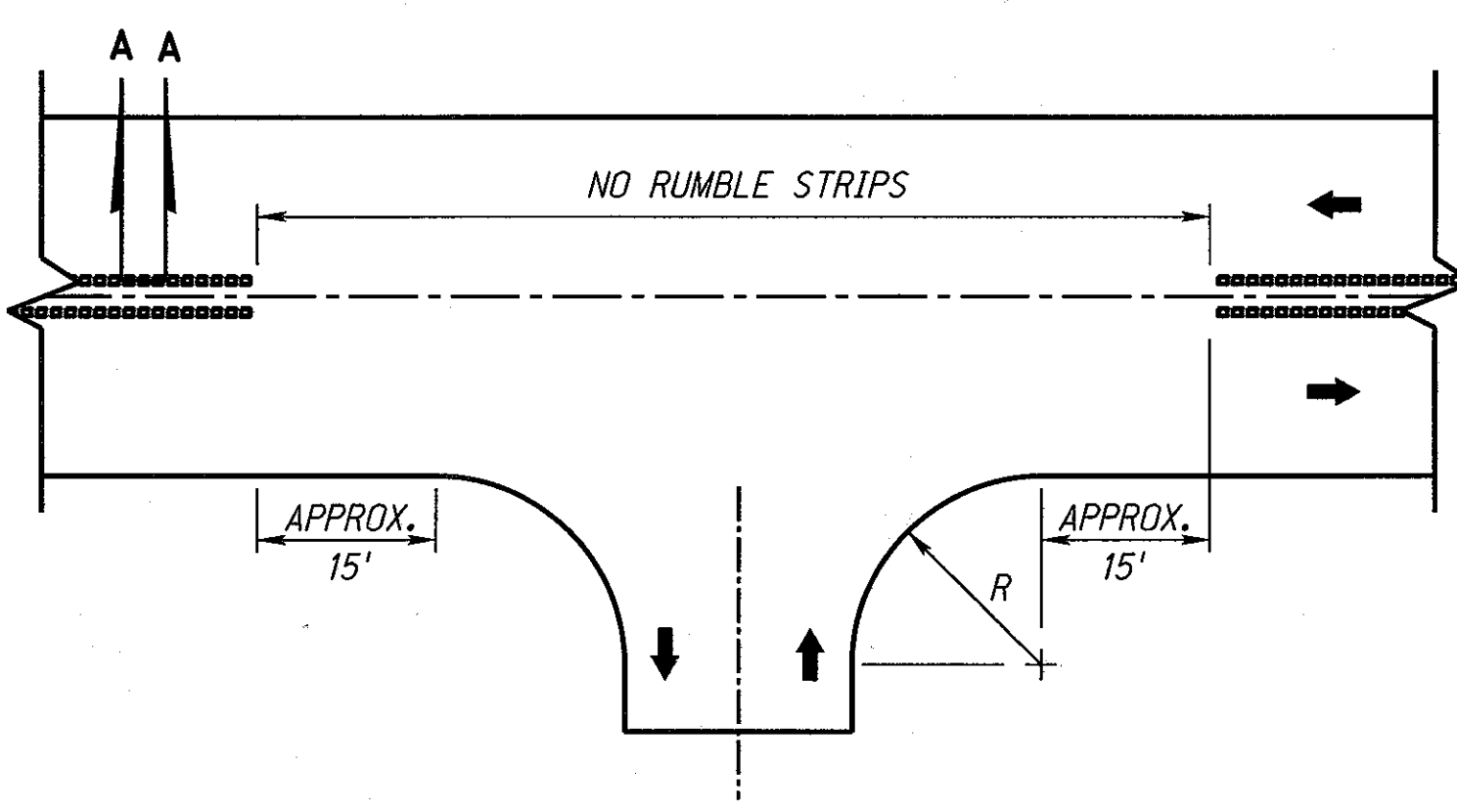
SHOULDER RUMBLE STRIPS PLACEMENT ON DIVIDED HIGHWAY AT ENTRANCE/EXIT RAMP



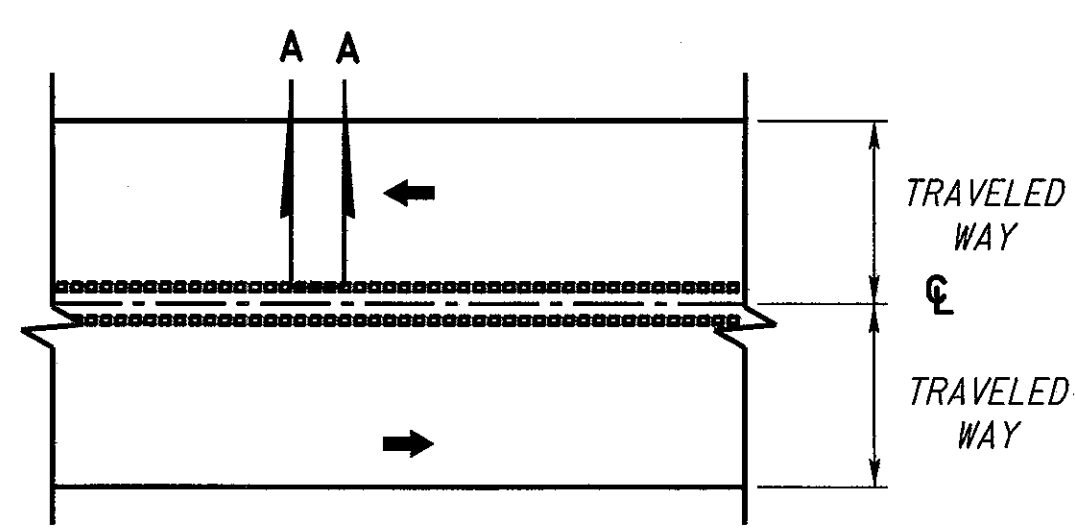
SHOULDER RUMBLE STRIPS PLACEMENT ON 2-LANE HIGHWAY AT INTERSECTION



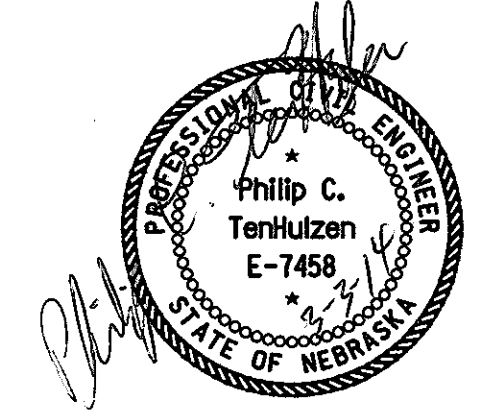
EDGELINE RUMBLE STRIPS PLACEMENT AT INTERSECTION



CENTERLINE RUMBLE STRIPS PLACEMENT AT INTERSECTIONS



CENTERLINE LAYOUT



MILLED RUMBLE STRIPS
SHEET 2 OF 2
SPECIAL PLAN 1C

Computer: DRDESIGN188
User: dcr13161
Date: 28-FEB-2014 10:50
File: m2tloa01.dgn
Scale: 1/2"=1'-0"
SHEET NO. 3200-1-E-00